

PREPARED BY: BRIAN J. DIEHL LS 13644 10 SUMAC MASON CITY, IOWA 50401 -- (641) 512-8004

SLSI 9-90

UNITED STATES PUBLIC LAND SURVEY CORNER CERTIFICATE

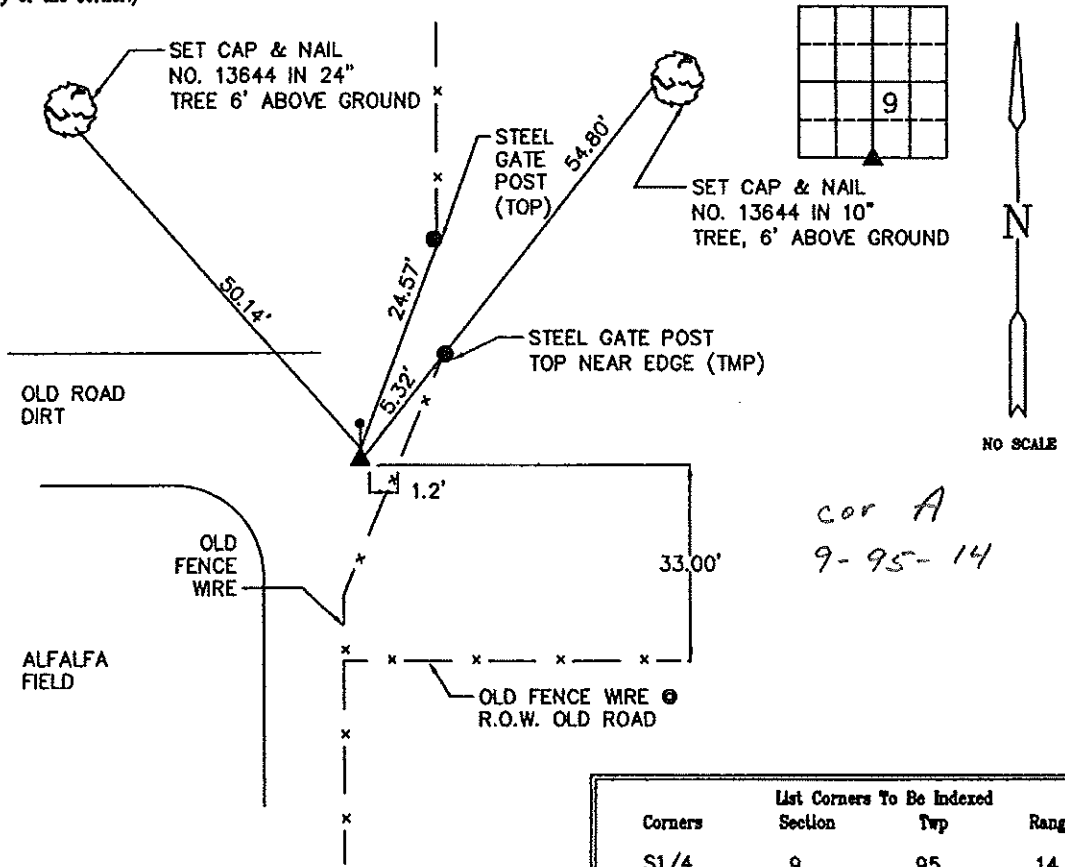
Land Survey Monuments Situated in Section 9, Township 95N, Range 14W, of the Fifth Principle Meridian, CHICKASAW County, Iowa
 Previously Recorded in NO RECORD CERTIFICATE in County Recorder's Office
(book, page, document number, etc.)

(Show reason for preparing this certificate, the evidence and detailed procedures used in establishing the corner positions and monumentation found or placed.)

Monument Description and Remarks: S1/4 CORNER -- SET 5/8" ROD WITH BLUE L.S. CAP NO. 13644 ONLINE WITH FENCE LINE SOUTH AND 33' FROM OLD R.O.W. FENCE. OWNER SHOWED R.O.W FENCE AND EXPLAINED THE OLD ROAD ALIGNMENT.

PLAN-VIEW

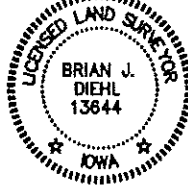
(Show a minimum of three reference ties to durable physical objects, relevant monuments and physical conditions that will enable recovery of the corner.)



List Corners To Be Indexed			
Corners	Section	Twp	Range
S1/4	9	95	14



BRIAN J. DIEHL, P.L.S.
 LAND SURVEYING SERVICES
 10 SUMAC
 MASON CITY, IA 50401
 641-512-8004
 bjd@diehl@mchsi.com



I hereby certify that this land surveying document was prepared and the related survey work was performed by me or under my direct personal supervision and that I am a duly licensed Land Surveyor under the laws of the State of Iowa.
[Signature]
 Brian J. Diehl
 License number 13644
 My license renewal date is December 31, 2011
 Sheets covered by this set: 3
 Date: September 26, 2011