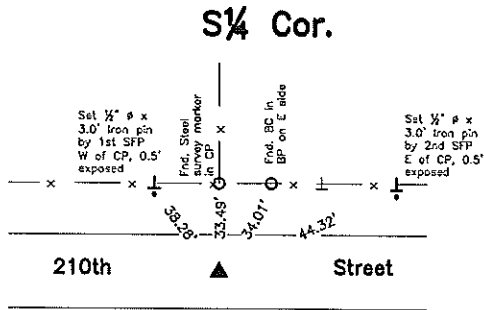
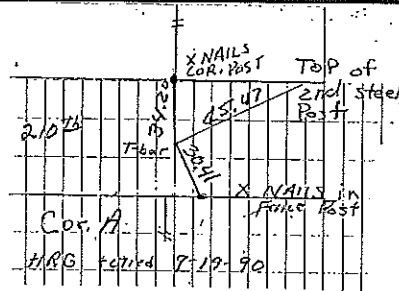


BK 2006-1889



CO ENGR'S RECORD TIES



COR. A	Iron	7-28-30	Found	Iron, Placed	FP
10-95-14	Found T-Bar	9-19-90	BK 145	pg 410	

Monument Description, Remarks, and Plan View:

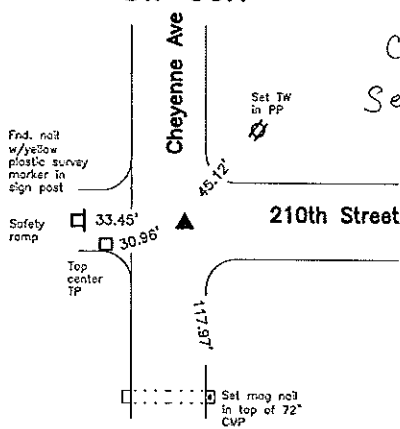
SE 1/4 Cor. - History of Corner =
 1930, 4-28 - 'FOUND STONE PLACED I.P.' per Co Engr's ties for Sec 10-95-14.
 1976, Jan. 13 - 'set 'T' bar' per Co Rec's Bk 110 Deeds, Pg 472.
 1990, Sept 19 - 'Found T-BAR' per Co Rec's Bk 145 Deeds, Pg 410 and 418.
 1995, 4/13 - 'Fd. Iron bar' per Co Rec's Bk 157 Deed, Pg 333,334.
 1995, 11-8 - 'Fd. T-Bar' per Co Rec's Bk 159, Pg 318.
 Co Engr's previous records indicate that corner was monumented with 'STONE and IRON'.
 Co Engr's current records indicate that corner is monumented with 'T-Bar' with ties as shown above.

Corner Recovery = Searched area with metal detector and excavated 0.5' x 0.5' x 0.5' deep hole at magnetic reading and near cross of remaining ties and found bent iron t-bar 0.3' deep with nail and flagging on E side. T-bar was bent slightly S, continued excavating a 1.0' x 1.0' x 1.1' hole, tied out straight portion of t-bar and removed. Searched area again with metal detector and continued excavating a 2.0' x 2.0' x 1.5' deep hole around t-bar location and probed 5.0' deep and found nothing. Monument found matches that of record and record ties are within reason. Therefore, set 3/4" x 4.0' Alum capped (#14677) iron rod (stamped "10", "15", and "1/4 Cor.") at location of straight portion of t-bar to perpetuate monumentation and used as the correct corner. Location of rod is 1.5' ± N of centerline of gravel road E-W and in-line with fencelines N. Rod is 0.4' deep. All ties are plumb distance unless indicated otherwise.

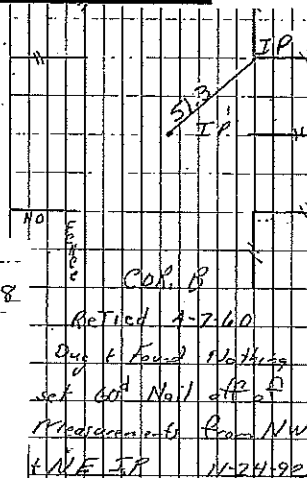
This certificate is being prepared because there are no longer three valid ties of record and there is a change to monumentation of record.

SW Cor.

CO ENGR'S RECORD TIES



Cor. B
 Sec 9-95-14



COR. B	Iron Pin	1928			
	Found No Stone	set I.P. MedWAY	Between Fence	COR.	

Monument Description, Remarks, and Plan View:

SW Cor. - History of Corner =
 1928 - 'Found No Stone set I.P. MedWAY Between Fence Cor.' per Co Engr's ties for Sec 9-95-14.
 1960, 4-7 - 'Retired' per Co Engr's ties for Sec 9-95-14.
 1992, 11-24 - 'Dug and Found Nothing set 60d Nail off of Measurements from NW & NE I.P.' per Co Engr's ties for Sec 9-95-14.
 2004, 03-30 - 'Found Iron Pin' per Co Rec's Doc. 2004-0788.
 Co Engr's previous records indicate that corner was monumented with 'I.P. and 60d Nail'.
 Co Engr's current records indicate that corner is monumented with 'IP' with ties as shown above.

Corner Recovery = Searched area with metal detector and excavated 1.0' x 1.0' x 0.8' deep hole at magnetic reading and found a 5/8" x iron pin with pink flagging 0.6' deep. Probed on all sides of iron pin and hit possible roadbed at 3.3' ± deep. County ties indicate corner was dug for and not found in 1928. Monument found matches that of record. Therefore, used pin as the correct corner. Pin is 2.5' ± E of centerline of gravel road N-S and in-line with centerline of gravel road E. All ties are plumb distance unless indicated otherwise.

This certificate is being prepared because there are no verifiable on file for this corner.

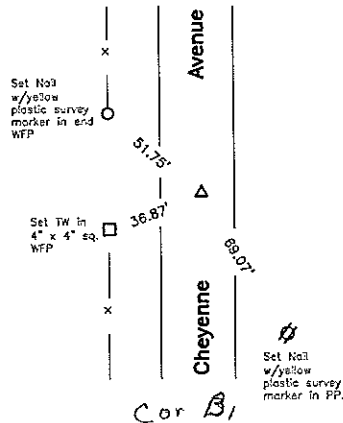
Legend

- BC = Nail with Bottle Cap
- BP = Brace Post
- CP = Corner Post
- CMP = Corrugated Metal Pipe
- CM = 4" Sq Concrete Monument with
- 1/2" iron rod in center (tie to rod)
- CX = Cut 'X'
- GP = Gate Post
- ID = Inside Diameter
- OD = Outside Diameter
- PP = Power Pole
- PW = Nail with Plastic Washer
- RCP = Reinforced Concrete Pipe
- RH = Red Head (Nail in wire)
- ROW = Right of Way
- RW = Nail with Reflective Round Washer
- R/W = Iron ROW Nail
- SFP = Steel 'T' Post
- SW = Nail with Square Metal Washer
- TP = Telephone Pedestal
- TW = Nail with Round Metal Washer
- WFP = Wood Fence Post
- X = X Nails



BK 2006-1889

SW Cor. NW $\frac{1}{4}$ SW $\frac{1}{4}$



Cor B
9-95-14

Monument Description, Remarks, and Plan View:

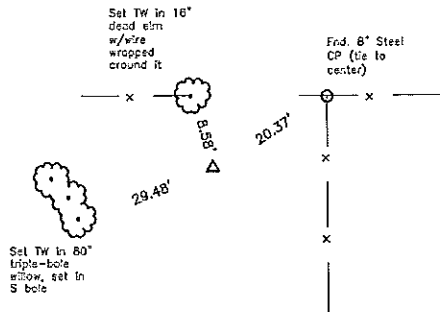
SW Cor. NW $\frac{1}{4}$ SW $\frac{1}{4}$ -

Co Engr's previous and current records do not indicate that corner is monumented.

Corner Recovery = Searched area with metal detector and found nothing, since there is no available record of corner being monumented, set a 3/4" ϕ x 4.0' Alum capped (#14677) iron rerod (stamped "1/4 1/4 Cor") on-line and equidistance from the W $\frac{1}{4}$ Cor and the SW Cor. Monument is 1.0' \pm E of centerline of gravel road N-S and in-line with tree line W and 32.0' E of fenceline remnants N-S. Rerod is 0.3' deep. All ties are plumb distance unless indicated otherwise.

This certificate is being prepared because there are no certificates on file for this corner.

Center



Cor O 10-95-14

Monument Description, Remarks, and Plan View:

Center - History of Corner =

1995, 11-8 - 'Land Corner' per Final Plot found in Co Rec's Bk 159, Pg 318.

Co Engr's previous and current records do not indicate that corner is monumented.

Corner Recovery = 1995 Survey shows Corner was established by intersection of 1/4 Corners E-W and N-S. However no monument was set in 1995. Corner was established using accepted PLSS methods, therefore set a 3/4" ϕ x 4.0' Alum capped (#14677) iron rerod (stamped "Center", "10"), to perpetuate monumentation and used as the correct corner. Monument is 6.0' \pm S of fenceline E-W and 20.0' \pm W of fenceline S. Rerod is flush. All ties are plumb distance unless indicated otherwise.

This certificate is being prepared because there are no certificates on file for this corner.

Legend

- | | | |
|---|--|------------------------------------|
| BC = Nail with Bottle Cap | ID = Inside Diameter | R/W = Iron ROW Rail |
| BP = Brace Post | OD = Outside Diameter | SFP = Steel 'T' Post |
| CP = Corner Post | PP = Power Pole | SW = Nail with Square Metal Washer |
| CMP = Corrugated Metal Pipe | PW = Nail with Plastic Washer | TP = Telephone Pedestal |
| CM = 4" Sq Concrete Monument with | RCP = Reinforced Concrete Pipe | TW = Nail with Round Metal Washer |
| 1/2" ϕ Iron rerod in center (tie to rerod) | RH = Red Head (Nail in wire) | WFP = Wood Fence Post |
| CX = Cut 'X' | ROW = Right of Way | X = X Nails |
| GP = Gate Post | RW = Nail with Reflective Round Washer | |

