

FILED 2002-0437
 RECORDER'S OFFICE
 CHICKASAW COUNTY, IOWA
 2002 FEB 15 9 07

Section 7-95-14
 As referred to in
 Eng. Tie Book

CINDY NESSERSMITH
 COUNTY RECORDER

STEVE BUSSE P.O. BOX 241 508 ELM STREET ALLISON, IOWA 50602 219-267-2519

UNITED STATES PUBLIC LAND SURVEY CORNER CERTIFICATE

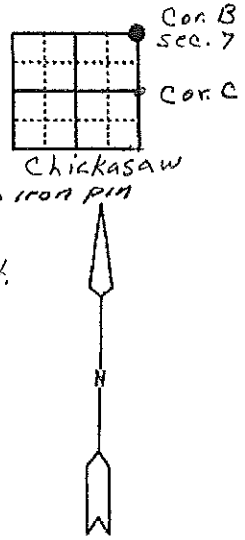
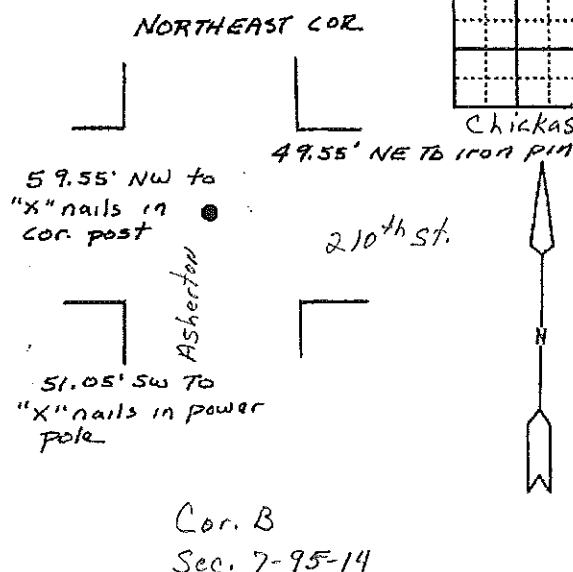
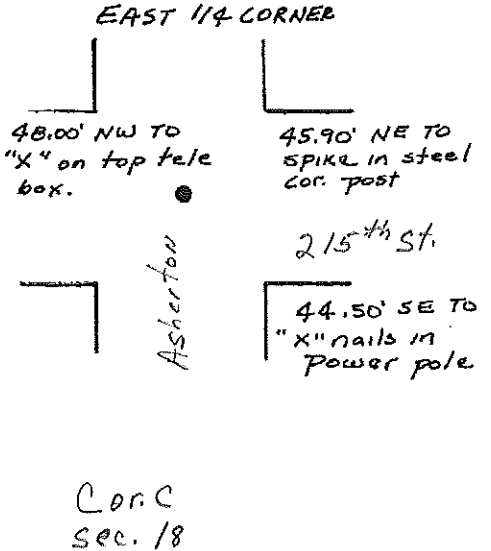
Land Survey Monuments situated in Section 18 ⁷ Township 95 North
 Range 14 West Of the Fifth Principal Meridian, CHICKASAW County, Iowa.
 Previously recorded in N/A In County Recorder's Office.

(Show reason for preparing this certificate, the evidence and detailed procedures used in establishing the corner positions and monumentation found or placed.)

Monument Description and Remarks: Found 5/8" iron pin 18" deep in center of intersection at East 1/4 corner. Raised with 1/2" R12" rebar with yellow cap. Found iron pin 15" deep at NE corner of section. In center of intersection. Raised with 1/2" x 10" rebar with yellow cap.

PLAN - VIEW

(Show a minimum of three reference ties to durable physical objects, relevant monuments and physical conditions that will enable recovery of the corner)



I hereby certify that the survey work was completed and this land surveying document was prepared by me or under my direct personal supervision and that I am a duly licensed land surveyor under the laws of the state of Iowa.

Signature: Steve Busse
 Name typed or printed: **STEVE BUSSE**

Date: 2/15/03 Reg. No. 9018

My license renewal date is December 31, 2002

SEAL

Corners	List Corners to be Indexed		
	Section	Twp	Range
NE COR.	18	95	14
E 1/4 COR.	18	95	14

Filed 2-20-03