

Prepared by & Return to: Herald - Reicks Surveying, 10 East Main Street, New Hampton, IA 50659, Ph. 641-394-2725

UNITED STATES PUBLIC LAND SURVEY CORNER CERTIFICATE

Land Survey Monuments situated in Section 18, Township 95 North, Range 14 West of the Fifth Principal Meridian, Chickasaw County, Iowa. 1., 2.) Not previously recorded in the County Recorder's office.

This certificate is being prepared in compliance with Iowa Code Chapter 355.11 because:

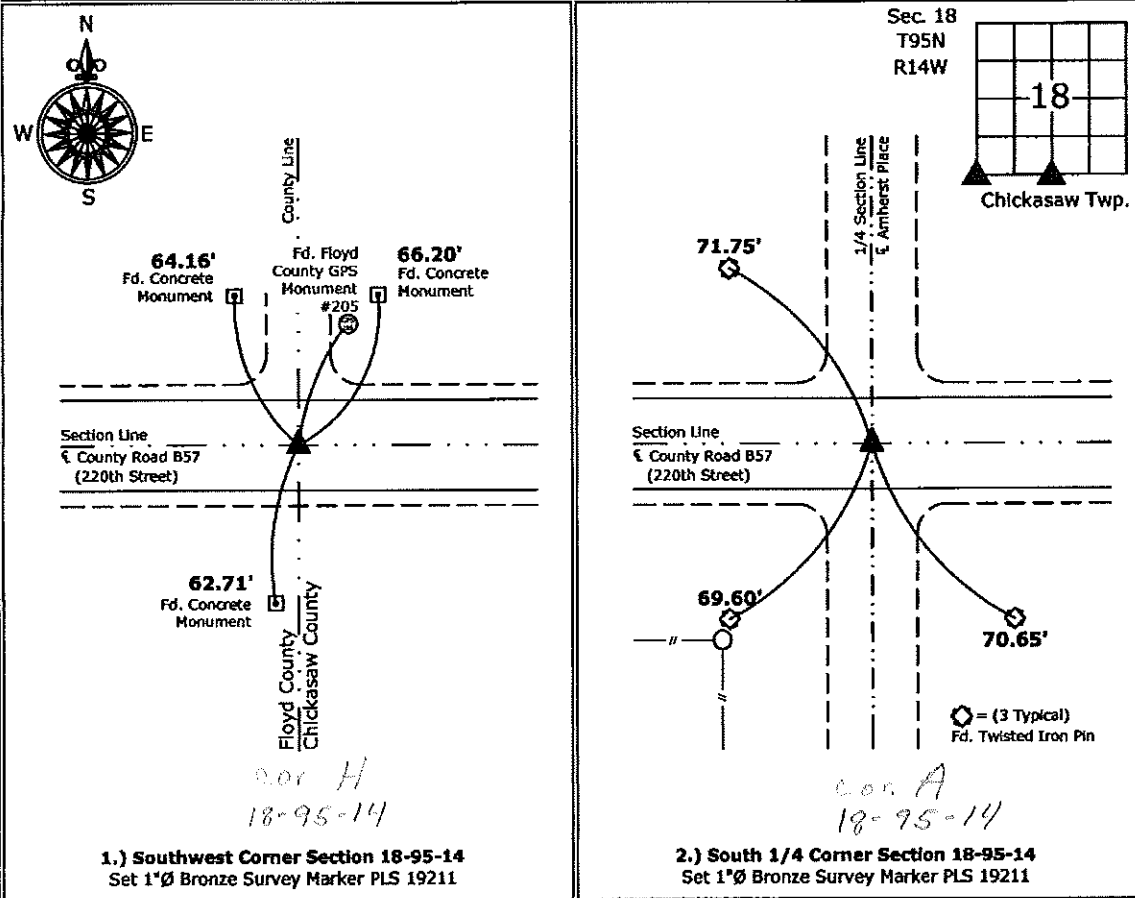
- 1 & 2 There is no certificate on file for this corner.
- There are no longer three valid ties of record.
- There are changes to reference ties of record.
- There is change of monumentation of record.
- To clarify description of record monument (ties).

Monument Description and Remarks:

- 1.) **Southwest Corner:** Set 1"Ø Bronze Survey Marker PLS 19211 at previous location (Found Lead Plug) by means of coordinates obtained prior to highway reconstruction, Project No. STP-S-CO19(80)--5E-19.
- 2.) **South 1/4 Corner:** Set 1"Ø Bronze Survey Marker PLS 19211 with ties obtained from the County Engineers office in conjunction with highway reconstruction, Project No. STP-S-CO19(80)--5E-19.

PLAN - VIEW

(Show a minimum of three reference ties to durable physical objects, relevant monuments and physical conditions that will enable recovery of the corner.)



1.) Southwest Corner Section 18-95-14
 Set 1"Ø Bronze Survey Marker PLS 19211

2.) South 1/4 Corner Section 18-95-14
 Set 1"Ø Bronze Survey Marker PLS 19211



I hereby certify that this land surveying document was prepared and the related survey work was performed by me or under my direct personal supervision and that I am a duly licensed Land Surveyor under the laws of the State of Iowa.
Kirk D. Reicks 7-5-12
 Kirk D. Reicks Date:
 License number 19211

List Corners to be Indexed			
Corners	Section	Twp.	Range
SW	18	95	14
S 1/4	18	95	14