

Prepared by & Return to: Herold - Reicks Surveying, 10 East Main Street, New Hampton, IA 50659, Ph. 641-394-2725

### UNITED STATES PUBLIC LAND SURVEY CORNER CERTIFICATE

Land Survey Monuments situated in Section 17, Township 95 North, Range 14 West of the Fifth Principal Meridian, Chickasaw County, Iowa. 1.) Previously recorded in Bk. 2003, Pg. 2981 in the County Recorder's office. 2.) Previously recorded in Bk. 2007, Pg. 1007 in the County Recorder's office.

This certificate is being prepared in compliance with Iowa Code Chapter 355.11 because:

- There is no certificate on file for this corner.
- There are no longer three valid ties of record.
- There are changes to reference ties of record.
- There is change of monumentation of record.
- To clarify description of record monument (ties).

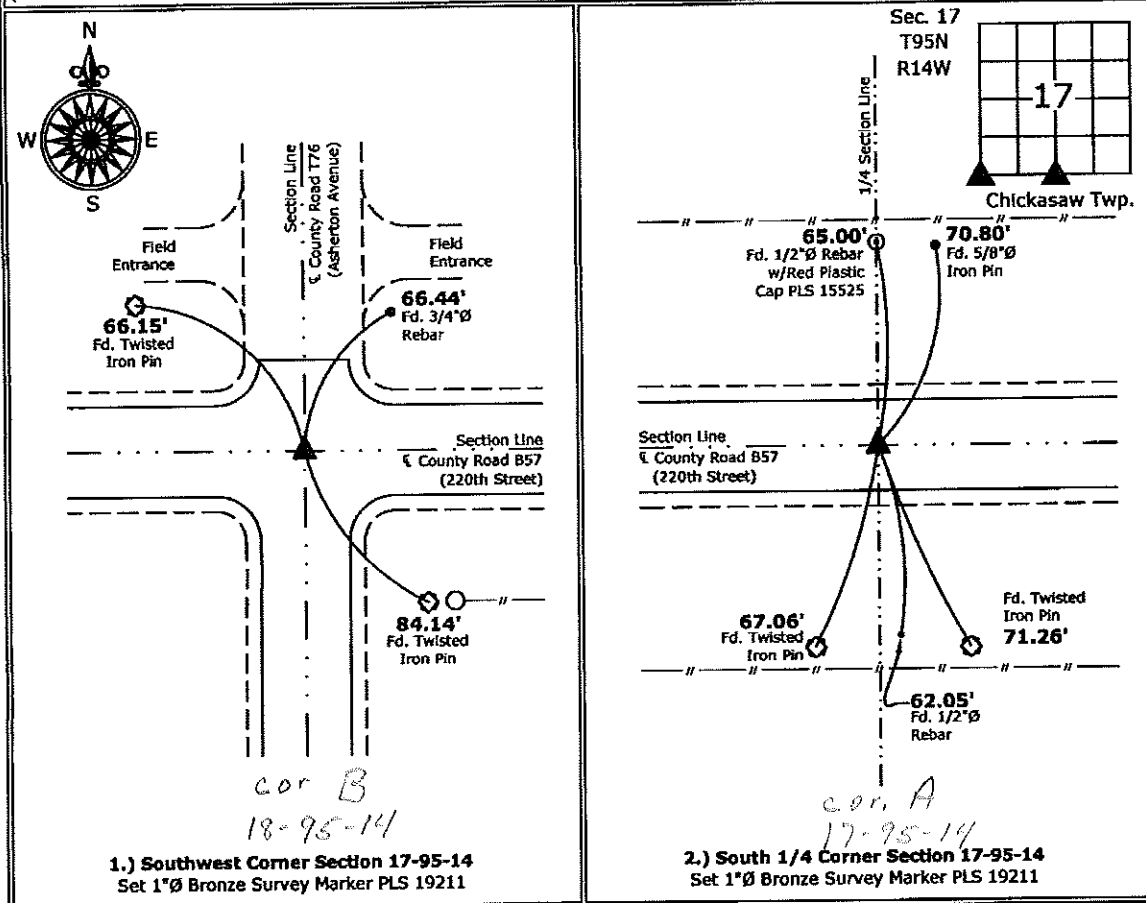
Monument Description and Remarks:

1.) **Southwest Corner:** Set 1"Ø Bronze Survey Marker PLS 19211 at previous location (Found MAG Nail w/Stainless Steel Washer PLS 15525) by means of coordinates obtained prior to highway reconstruction, Project No. STP-S-CO19(80)--5E-19.

2.) **South 1/4 Corner:** Set 1"Ø Bronze Survey Marker PLS 19211 at previous location (Found MAG Nail w/Stainless Steel Washer PLS 15525) by means of coordinates obtained prior to highway reconstruction, Project No. STP-S-CO19(80)--5E-19.

#### PLAN - VIEW

(Show a minimum of three reference ties to durable physical objects, relevant monuments and physical conditions that will enable recovery of the corner.)



I hereby certify that this land surveying document was prepared and the related survey work was performed by me or under my direct personal supervision and that I am a duly licensed Land Surveyor under the laws of the State of Iowa.

*Kirk D. Reicks* 7-5-12  
 Kirk D. Reicks Date:

License number 19211

List Corners to be Indexed			
Corners	Section	Twp.	Range
SW	17	95	14
S 1/4	17	95	14

2003 SEP 23 AM 9 08

CINDY MESSERSMITH  
 COUNTY RECORDER

TeKIPPE ENGINEERING, P.C., 128 South Vine Street, West Union, Iowa 52175 Phone (563) 422-6131

UNITED STATES PUBLIC LAND SURVEY CORNER CERTIFICATE

OF

Land Survey Monuments situated in Section 17, Township 95 North, Range 14 West of the Fifth Principal Meridian, CHICKASAW County, Iowa. Previously recorded in none in County Recorder's Office.  
 (book, page, document number, etc.)

(Show reason for preparing this certificate, the evidence and detailed procedures used in establishing the corner positions and monumentation found or placed.)

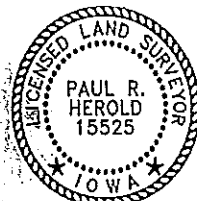
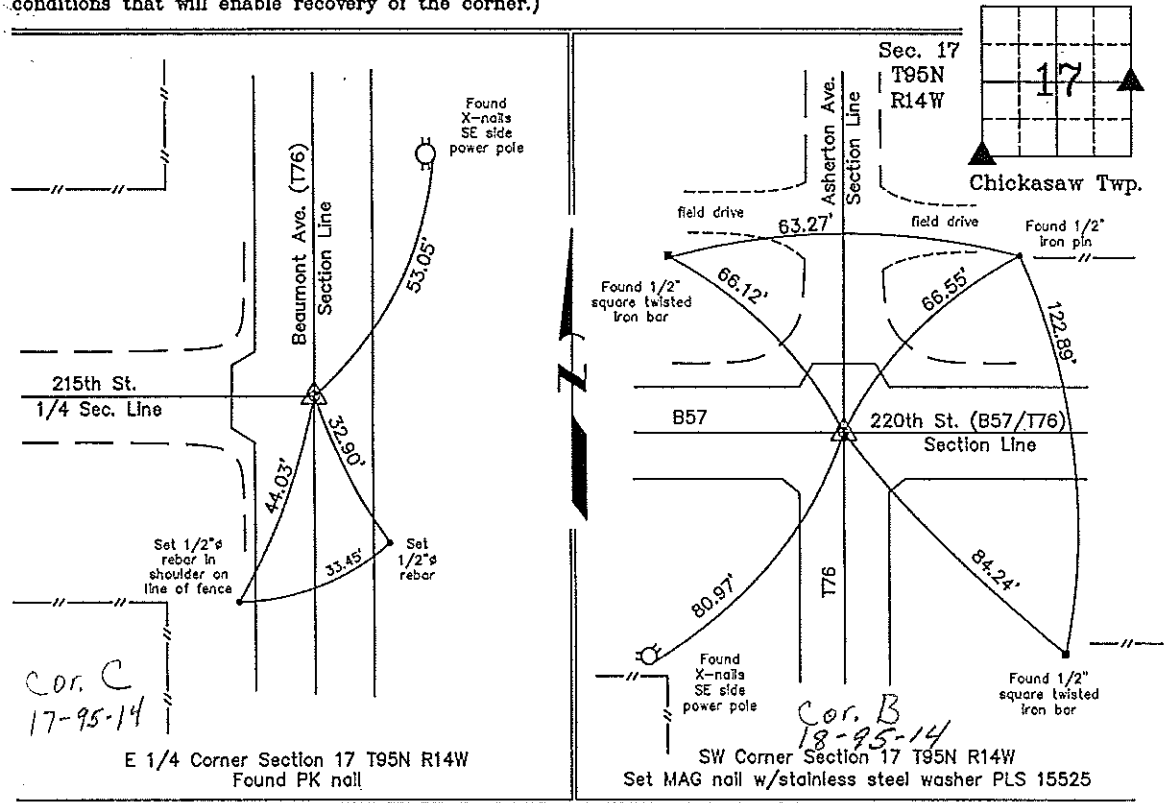
Monument Description and Remarks: E 1/4 Corner Section 17 T95N R14W: Found PK nail with information obtained from the Chickasaw County Engineer's Office in Field Book Chickasaw Twp. Corner Ties, Corner 'C'.

SW Corner Section 17 T95N R14W: Set MAG nail w/stainless steel washer PLS 15525 using reference ties found in the Chickasaw County Engineer's Office in Field Book Chickasaw Twp. Corner Ties, Section 18, Corner 'B'.

PLAN - VIEW

Project Number 03171.LS  
 FB. 46K PG. 23-25

(Show a minimum of three reference ties to durable physical objects, relevant monuments and physical conditions that will enable recovery of the corner.)



I hereby certify that this land surveying document was prepared and the related survey work was performed by me or under my direct personal supervision and that I am a duly licensed Land Surveyor under the laws of the State of Iowa.  
*Paul R. Herold* 9-19-03  
 Paul R. Herold Date  
 License number 15525  
 My license renewal date is December 31, 2004.  
 Sheets covered by this seal: Individual

List Corners to be Indexed			
Corners	Section	Twp.	Range
E 1/4	17	95N	14W
SW	17	95N	14W

Filed 10-7-03

X:\Section Corners\Sec. 17\17-95-14ou.dwg