

Prepared by & Return to: Herold - Reicks Surveying, 10 East Main Street, New Hampton, IA 50659, Ph. 641-394-2725

UNITED STATES PUBLIC LAND SURVEY CORNER CERTIFICATE

Land Survey Monuments situated in Section 1, Township 95 North, Range 14 West of the Fifth Principal Meridian, Chickasaw County, Iowa. 1., 2.) Not previously recorded in the County Recorder's office.

This certificate is being prepared in compliance with Iowa Code Chapter 355.11 because:

- 1 & 2 There is no certificate on file for this corner.
 There are no longer three valid ties of record.
 There are changes to reference ties of record.
 There is change of monumentation of record.
 To clarify description of record monument (ties).

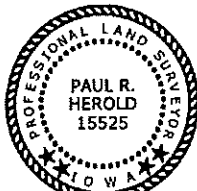
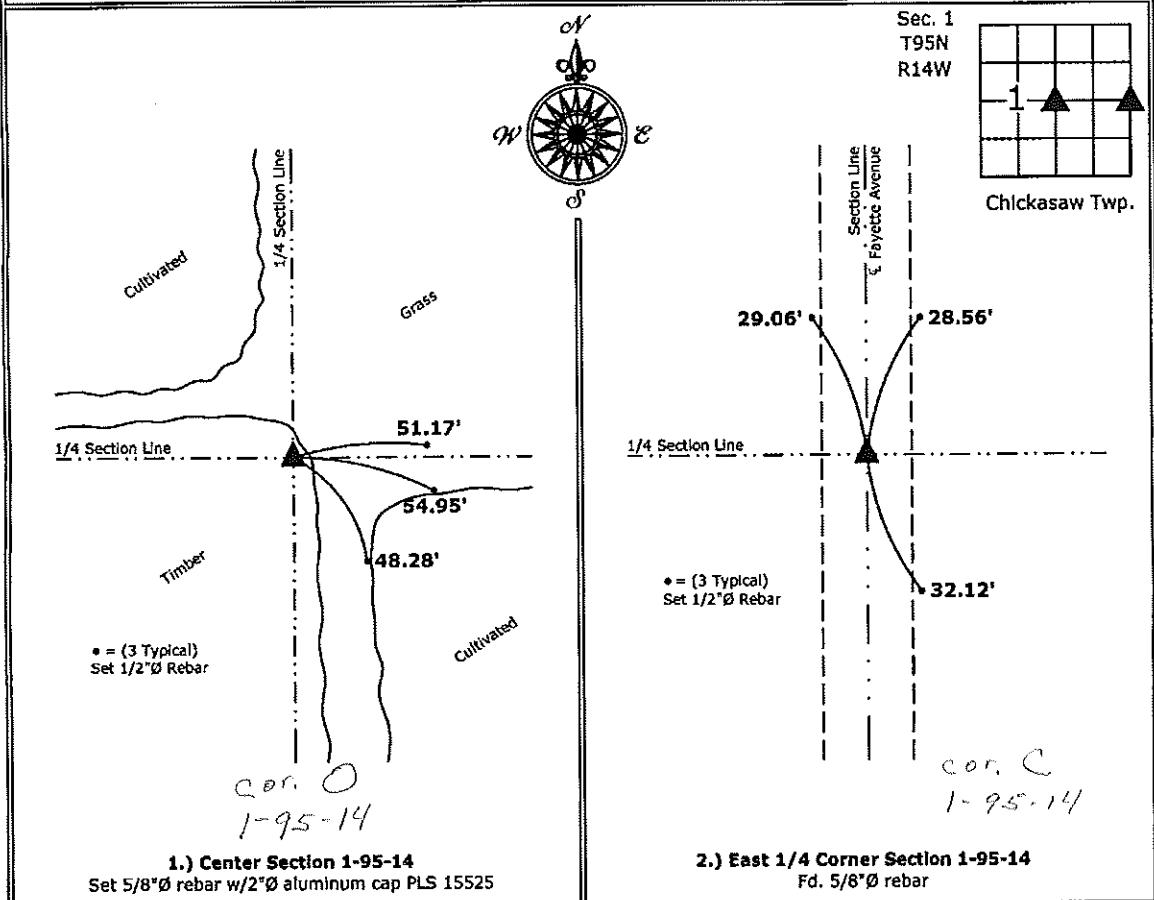
Monument Description and Remarks:

1.) **Center:** Set 5/8"Ø rebar w/2"Ø aluminum cap PLS 15525 at the intersection of 1/4 Section Lines; there is no record of previous perpetuation of this monument.

2.) **East 1/4 Corner:** Fd. 5/8"Ø rebar from information obtained from a survey and plat made by Steve Busse, recorded on July 29, 1997 in Bk. 164, Pg. 448 in the County Recorder's office.

PLAN - VIEW

(Show a minimum of three reference ties to durable physical objects, relevant monuments and physical conditions that will enable recovery of the corner.)



I hereby certify that this land surveying document was prepared and the related survey work was performed by me or under my direct personal supervision and that I am a duly licensed Land Surveyor under the laws of the State of Iowa.

Paul R. Herold 9-6-12
 Paul R. Herold Date:
 License number 15525
 My license renewal date is December 31, 2012.
 Sheets covered by this seal: Individual sheet only

List Corners to be Indexed			
Corners	Section	Twp.	Range
CTR	1	95	14
E 1/4	1	95	14

Project Number: 2012-136
 FB: Chickasaw County 4, Pgs. 51-53