

Prepared by & Return to: Herold - Reicks Surveying, 10 East Main Street, New Hampton, IA 50659, Ph. 641-394-2725

### UNITED STATES PUBLIC LAND SURVEY CORNER CERTIFICATE

Land Survey Monuments situated in Section 1, Township 95 North, Range 14 West of the Fifth Principal Meridian, Chickasaw County, Iowa. 1., 2.) Not previously recorded in the County Recorder's office.

This certificate is being prepared in compliance with Iowa Code Chapter 355.11 because:

- 1 & 2  There is no certificate on file for this corner.  
 There are no longer three valid ties of record.  
 There are changes to reference ties of record.  
 There is change of monumentation of record.  
 To clarify description of record monument (ties).

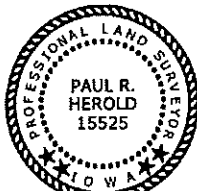
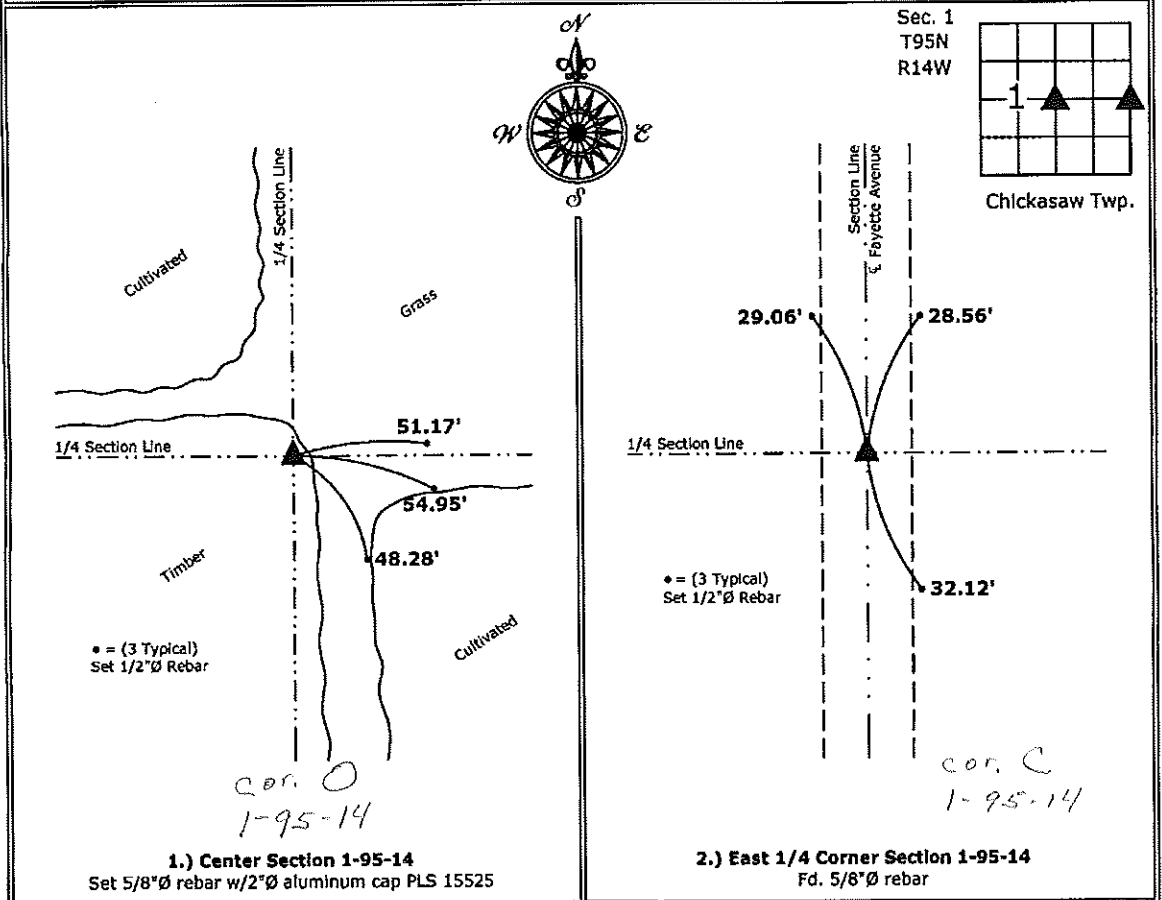
Monument Description and Remarks:

1.) **Center:** Set 5/8"Ø rebar w/2"Ø aluminum cap PLS 15525 at the intersection of 1/4 Section Lines; there is no record of previous perpetuation of this monument.

2.) **East 1/4 Corner:** Fd. 5/8"Ø rebar from information obtained from a survey and plat made by Steve Busse, recorded on July 29, 1997 in Bk. 164, Pg. 448 in the County Recorder's office.

#### PLAN - VIEW

(Show a minimum of three reference ties to durable physical objects, relevant monuments and physical conditions that will enable recovery of the corner.)



I hereby certify that this land surveying document was prepared and the related survey work was performed by me or under my direct personal supervision and that I am a duly licensed Land Surveyor under the laws of the State of Iowa.

*Paul R. Herold* 9-6-12  
 Paul R. Herold Date:  
 License number 15525  
 My license renewal date is December 31, 2012.  
 Sheets covered by this seal: Individual sheet only

List Corners to be Indexed			
Corners	Section	Twp.	Range
CTR	1	95	14
E 1/4	1	95	14

Project Number: 2012-136  
 FB: Chickasaw County 4, Pgs. 51-53

UNITED STATES PUBLIC LAND SURVEY CORNER CERTIFICATE

OF

Land Survey Monuments situated in Section 1, Township 95 North, Range 14 West, of the Fifth Principal Meridian, Chickasaw County, Iowa. Previously recorded in N/A in County Recorder's Office.

(Show reason for preparing this certificate, the evidence and detailed procedures used in establishing the corner positions and monumentation found or placed.)

Monument Description and Remarks: Found 5/8" rebar on fence line. East and West in center of road.

PLAN - VIEW

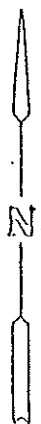
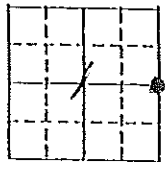
(Show a minimum of three reference ties to durable physical objects, relevant monuments and physical conditions that will enable recovery of the corner.)

83.55' NW to "X" nails in power pole.

33.4' West to steel cor. post

35.00' East to steel post (at ground line)

33.00' East to pin/cap # 7549



Cor. C  
1-95-14

EAST 1/4 CORNER  
FOUND 5/8" REBAR

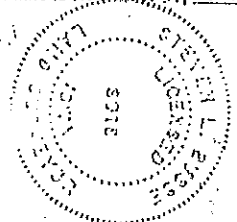
I hereby certify that the survey work was completed and this land surveying document was prepared by me or under my direct personal supervision and that I am a duly registered land surveyor under the laws of the state of Iowa

Signature: Steve Busse  
Name typed or printed: STEVE BUSSE

Date: 7/22/97 Reg. No. 9018

My registration renewal date is December 31, 1998

SEAL



Corners	List Corners to be Indexed	Section	Twp	Range
East 1/4	Cor. C	1	95	14

XY DOCUMENT No. 00163 FILED FOR RECORD THE 24th DAY OF July 1997 AT 8:48 O'CLOCK A.M. BOOK 1674 PAGE 423

RECORDING FEE \$ 6.00

TRANSFER FEE \$       

STATE OF IOWA, CHICKASAW COUNTY  
Bethel M. Ross Recorder  
Robert H. Ross Deputy