

Prepared by & Return to: Herold - Reicks Surveying, 10 East Main Street, New Hampton, IA 50659, Ph. 641-394-2725

UNITED STATES PUBLIC LAND SURVEY CORNER CERTIFICATE

Land Survey Monuments situated in Section 17, Township 95 North, Range 14 West of the Fifth Principal Meridian, Chickasaw County, Iowa. 1.) Previously recorded in Bk. 2003, Pg. 2981 in the County Recorder's office. 2.) Previously recorded in Bk. 2007, Pg. 1007 in the County Recorder's office.

This certificate is being prepared in compliance with Iowa Code Chapter 355.11 because:

- There is no certificate on file for this corner.
- There are no longer three valid ties of record.
- There are changes to reference ties of record.
- There is change of monumentation of record.
- To clarify description of record monument (ties).

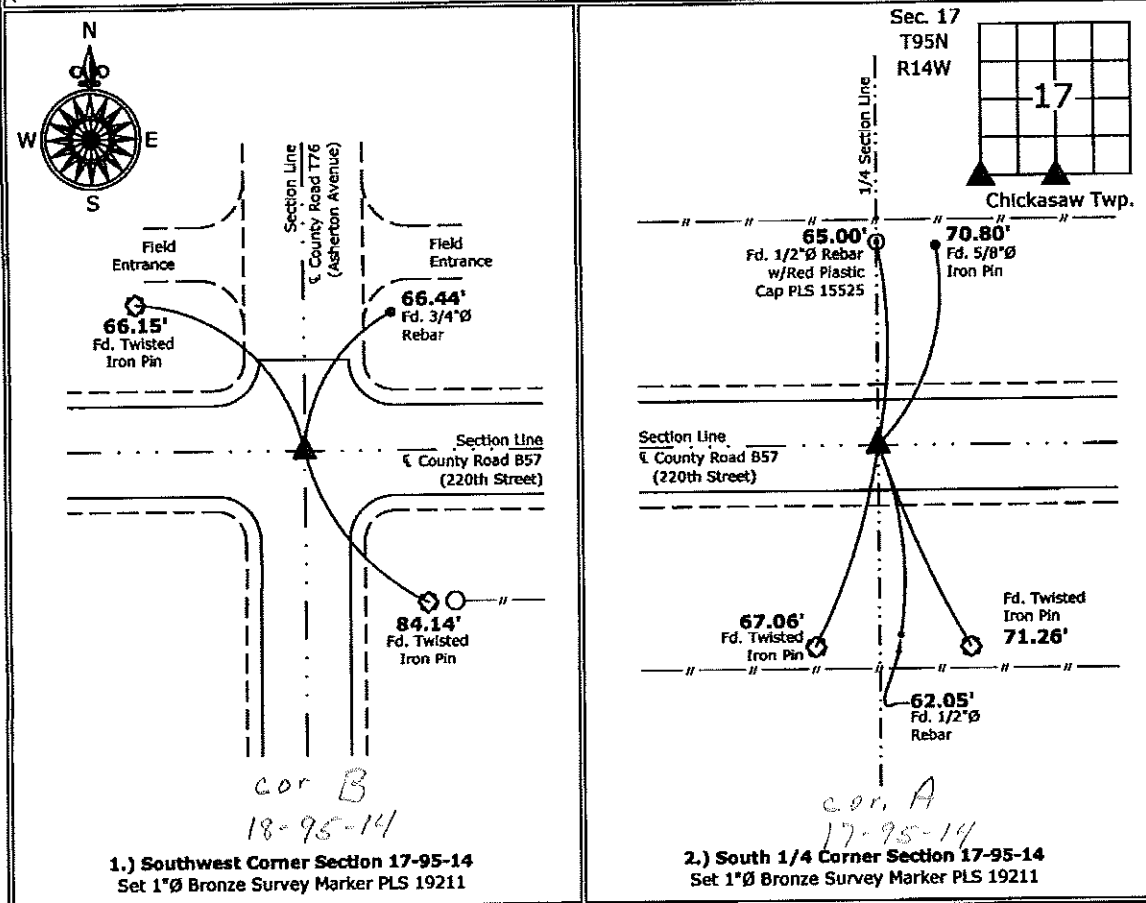
Monument Description and Remarks:

1.) **Southwest Corner:** Set 1"Ø Bronze Survey Marker PLS 19211 at previous location (Found MAG Nail w/Stainless Steel Washer PLS 15525) by means of coordinates obtained prior to highway reconstruction, Project No. STP-S-CO19(80)--5E-19.

2.) **South 1/4 Corner:** Set 1"Ø Bronze Survey Marker PLS 19211 at previous location (Found MAG Nail w/Stainless Steel Washer PLS 15525) by means of coordinates obtained prior to highway reconstruction, Project No. STP-S-CO19(80)--5E-19.

PLAN - VIEW

(Show a minimum of three reference ties to durable physical objects, relevant monuments and physical conditions that will enable recovery of the corner.)



I hereby certify that this land surveying document was prepared and the related survey work was performed by me or under my direct personal supervision and that I am a duly licensed Land Surveyor under the laws of the State of Iowa.

Kirk D. Reicks 7-5-12
 Kirk D. Reicks Date:

License number 19211

List Corners to be Indexed			
Corners	Section	Twp.	Range
SW	17	95	14
S 1/4	17	95	14

Chickasaw Co. Recorder
 Cindy Messersmith
Fee Book 2007-1007
 05/16/2007 00332PM
 SCC SEC COR CERT
 Book: Page: # Pages: 1
 Total Fees: \$7.00

Herold - Reicks Surveying, 25 1/2 East Main Street, Suite 204, New Hampton, IA 50659, Ph. 641-394-2725

UNITED STATES PUBLIC LAND SURVEY CORNER CERTIFICATE

Land Survey Monuments situated in:
 Section 17, Township 95 North, Range 14 West of the Fifth Principal Meridian,
Chickasaw County, Iowa. Previously recorded in 1.} Doc. #2003-2980
2.} None
 in County Recorder's Office.

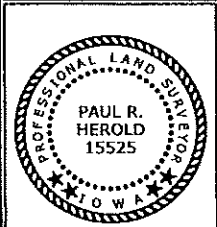
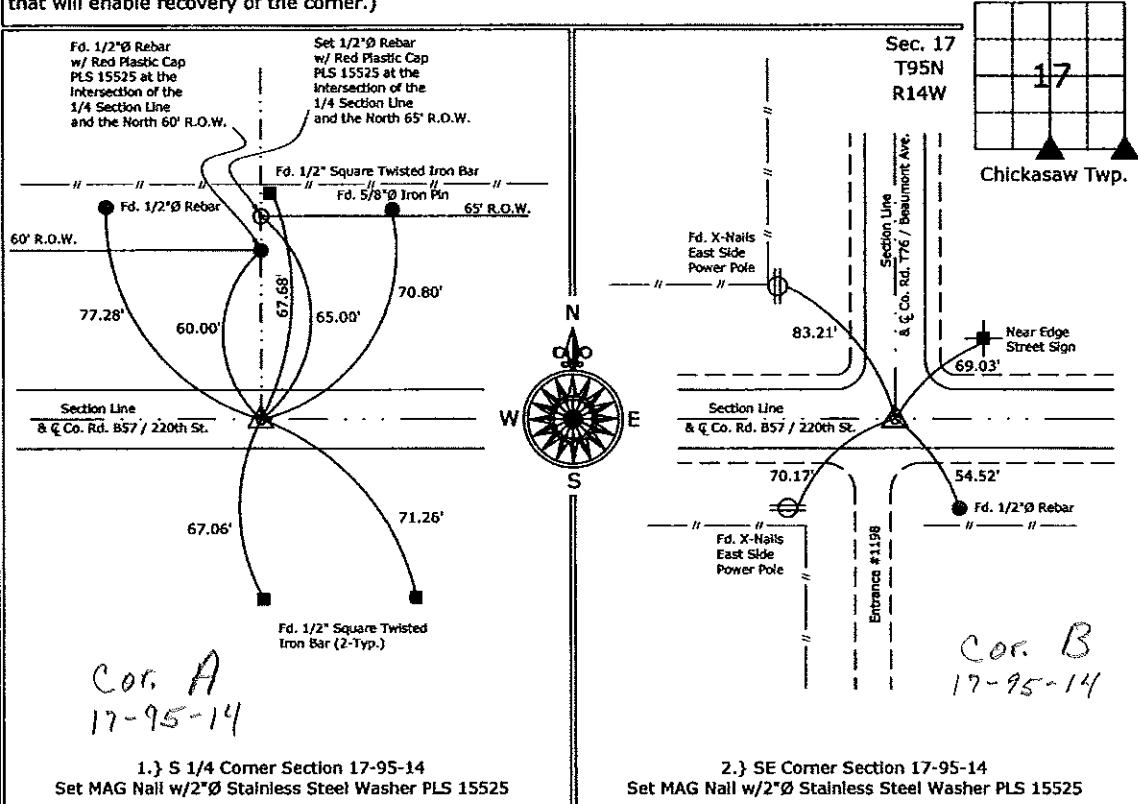
(Show reason for preparing this certificate, the evidence and detailed procedures used in establishing the corner positions and monumentation found or placed.)

Monument Description and Remarks:

- 1.) S 1/4 Corner Section 17-95-14, Fd. Nail Shaft from the previous Section Corner Certificate, removed and Set a MAG Nail w/2"Ø Stainless Steel Washer PLS 15525.
- 2.) SE Corner Section 17-95-14, Fd. Nail Shaft from ties obtained from the County Engineers Field Book, Corner ties - Chickasaw Twp, Section 17, Corner "B", removed and Set a MAG Nail w/2"Ø Stainless Steel Washer PLS 15525.

PLAN - VIEW

(Show a minimum of three reference ties to durable physical objects, relevant monuments and physical conditions that will enable recovery of the corner.)



I hereby certify that this land surveying document was prepared and the related survey work was performed by me or under my direct personal supervision and that I am a duly licensed Land Surveyor under the laws of the State of Iowa.

Paul R. Herold 5-16-07
 Paul R. Herold Date:
 License number 15525
 My license renewal date is December 31, 2008.
 Sheets covered by this seal: Individual Sheet Only

List Corners to be Indexed			
Corners	Section	Twp.	Range
S 1/4	17	95	14
SE	17	95	14

Project Number: 2007-033
 FB: Chickasaw County 1, Pgs. 13-20

File: S:\Projects\2007\2007-037.dwg, 5/16/2007 12:56:02 PM

Section 8-95-14
 As referred to in
 Eng. Tie Book

FILED 2003-2980
 RECORDER'S OFFICE
 CHICKASAW COUNTY, IOWA
 2003 SEP 23 AM 9 08
 CHIDY MESSERSMITH
 COUNTY RECORDER

TEKIPPE ENGINEERING, P.C., 128 South Vine Street, West Union, Iowa 52175 Phone (563) 422-6131

UNITED STATES PUBLIC LAND SURVEY CORNER CERTIFICATE

OF 8

Land Survey Monuments situated in Section 17, Township 95 North, Range 14 West of the Fifth Principal Meridian, CHICKASAW County, Iowa.

Previously recorded in none in County Recorder's Office.
(book, page, document number, etc.)

(Show reason for preparing this certificate, the evidence and detailed procedures used in establishing the corner positions and monumentation found or placed.)

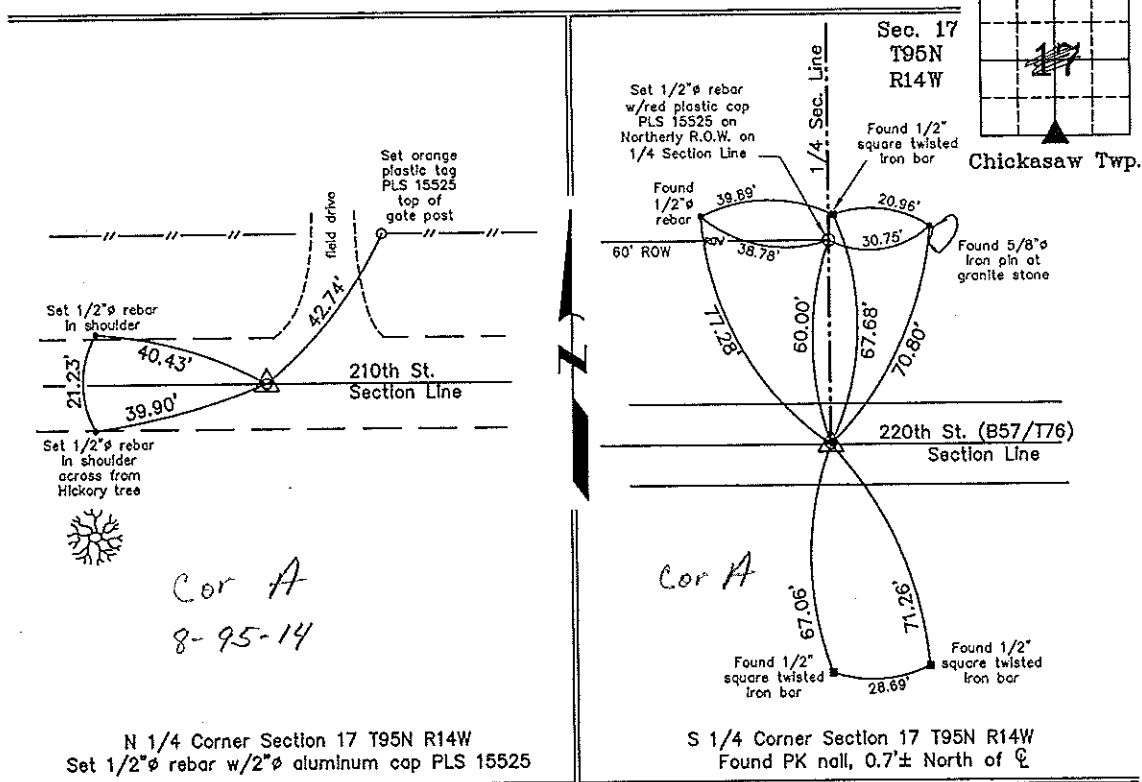
Monument Description and Remarks: N 1/4 Corner Section 17 T95N R14W: Set 1/2"Ø rebar w/2"Ø aluminum cap PLS 15525 by doubling the distance from the found NE Corner across the extension of a 1/4-1/4 Section Line fence and placing the Corner in the centerline of the County Road.

S 1/4 Corner Section 17 T95N R14W: Found PK nail with information obtained from the Chickasaw County Engineer's Office in Field Book Chickasaw Twp. Corner Ties, Corner 'A'.

PLAN - VIEW

Project Number 03171.LS
 FB. 46K PG. 23-25

(Show a minimum of three reference ties to durable physical objects, relevant monuments and physical conditions that will enable recovery of the corner.)



N 1/4 Corner Section 17 T95N R14W
 Set 1/2"Ø rebar w/2"Ø aluminum cap PLS 15525

S 1/4 Corner Section 17 T95N R14W
 Found PK nail, 0.7'± North of C



I hereby certify that this land surveying document was prepared and the related survey work was performed by me or under my direct personal supervision and that I am a duly licensed Land Surveyor under the laws of the State of Iowa.

Paul R. Herold 9-19-03
 Paul R. Herold Date
 License number 15525
 My license renewal date is December 31, 2004.
 Sheets covered by this seal: Individual

List Corners to be Indexed			
Corners	Section	Twp.	Range
N 1/4	17	95N	14W
S 1/4	17	95N	14W

File 10-7-03
 X:\Section Corners\Sec. 17\17-95-14cw.dwg