

Chickasaw Co. Recorder
 Cindy Messersmith
Fee Book 2007-1007
 05/16/2007 00332PM
 SCC SEC COR CERT
 Book: Page: # Pages: 1
 Total Fees: \$7.00

Herold - Reicks Surveying, 25 1/2 East Main Street, Suite 204, New Hampton, IA 50659, Ph. 641-394-2725

UNITED STATES PUBLIC LAND SURVEY CORNER CERTIFICATE

Land Survey Monuments situated in:
 Section 17, Township 95 North, Range 14 West of the Fifth Principal Meridian,
Chickasaw County, Iowa. Previously recorded in 1.} Doc. #2003-2980
2.} None
 in County Recorder's Office.

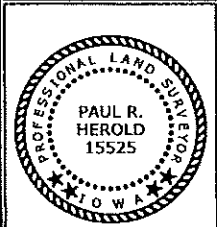
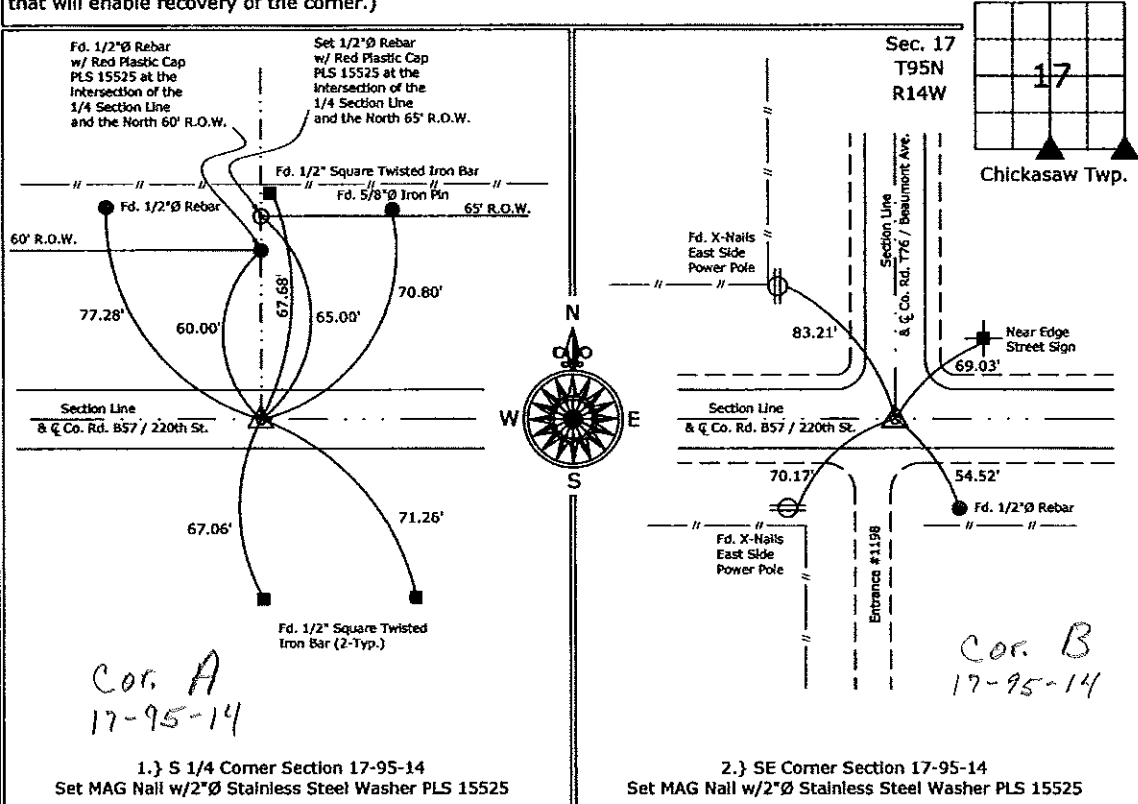
(Show reason for preparing this certificate, the evidence and detailed procedures used in establishing the corner positions and monumentation found or placed.)

Monument Description and Remarks:

- 1.) S 1/4 Corner Section 17-95-14, Fd. Nail Shaft from the previous Section Corner Certificate, removed and Set a MAG Nail w/2"Ø Stainless Steel Washer PLS 15525.
- 2.) SE Corner Section 17-95-14, Fd. Nail Shaft from ties obtained from the County Engineers Field Book, Corner ties - Chickasaw Twp, Section 17, Corner "B", removed and Set a MAG Nail w/2"Ø Stainless Steel Washer PLS 15525.

PLAN - VIEW

(Show a minimum of three reference ties to durable physical objects, relevant monuments and physical conditions that will enable recovery of the corner.)



I hereby certify that this land surveying document was prepared and the related survey work was performed by me or under my direct personal supervision and that I am a duly licensed Land Surveyor under the laws of the State of Iowa.

Paul R. Herold 5-16-07
 Paul R. Herold Date:
 License number 15525
 My license renewal date is December 31, 2008.
 Sheets covered by this seal: Individual Sheet Only

List Corners to be Indexed			
Corners	Section	Twp.	Range
S 1/4	17	95	14
SE	17	95	14

Project Number: 2007-033
 FB: Chickasaw County 1, Pgs. 13-20

File: S:\Projects\2007\2007-037.dwg, 5/16/2007 12:55:02 PM

FILED 2005-1554
 RECORDER'S OFFICE
 CHICKASAW COUNTY, IOWA
 2005 JUL 26 ^{for 7:00} AM 9 10
 CINDY MESSERSMITH
 COUNTY RECORDER

PREPARED BY/RETURN TO: KENNETH D. STARK STARK SURVEYING 1622 So. Tenth Ave. WAGON CITY, IOWA 52491 641-423-7847

See 16-95-14
 As referred in
 Engr. Tie Book

UNITED STATES PUBLIC LAND SURVEY CORNER CERTIFICATE OF
 16

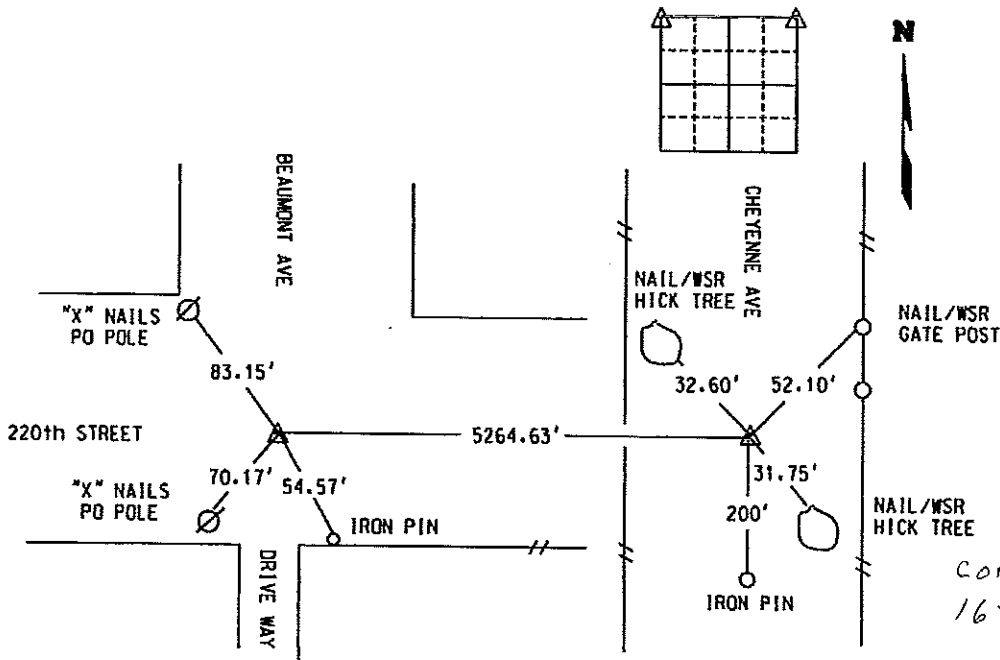
Land Survey Monuments situated in Section 21, Township 95N, Range 14W
 of the Fifth Principal Meridian, CHICKASAW County, Iowa.

Previously recorded in NA In County Recorder's Office.
(book, page, document number, etc.)

(Show reason for preparing this certificate, the evidence and detailed procedures used in establishing the corner positions and monumentation found or placed.)

Monument Description and Remarks:

NW COR = SET HINGE NAIL FROM COUNTY TIES
 NE COR = FOUND IRON PIN



cor. B
 16-95-14

List Corners to be Indexed			
Corner	Section	Township	Range
NW	21	95	14
NE	21	95	14

LICENSED LAND SURVEYOR
 KENNETH D. STARK
 10898
 IOWA

I hereby certify that this land surveying document was prepared and the related survey work was performed by me or under my personal supervision and that I am a duly Licensed Land Surveyor under the laws of the state of Iowa.
 Kenneth D. Stark Date 07-19-05
 License number 10898
 My license renewal date is December 31, 2005
 Pages or sheets covered by this sect. 1