

Prepared by & Return to: Herold - Reicks Surveying, 10 East Main Street, New Hampton, IA 50659, Ph. 641-394-2725

UNITED STATES PUBLIC LAND SURVEY CORNER CERTIFICATE

Land Survey Monuments situated in Section 21, Township 95 North, Range 14 West of the Fifth Principal Meridian, Chickasaw County, Iowa. Not previously recorded in the County Recorder's office.

This certificate is being prepared in compliance with Iowa Code Chapter 355.11 because:

Monument Description and Remarks:

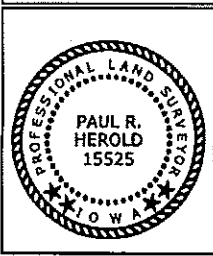
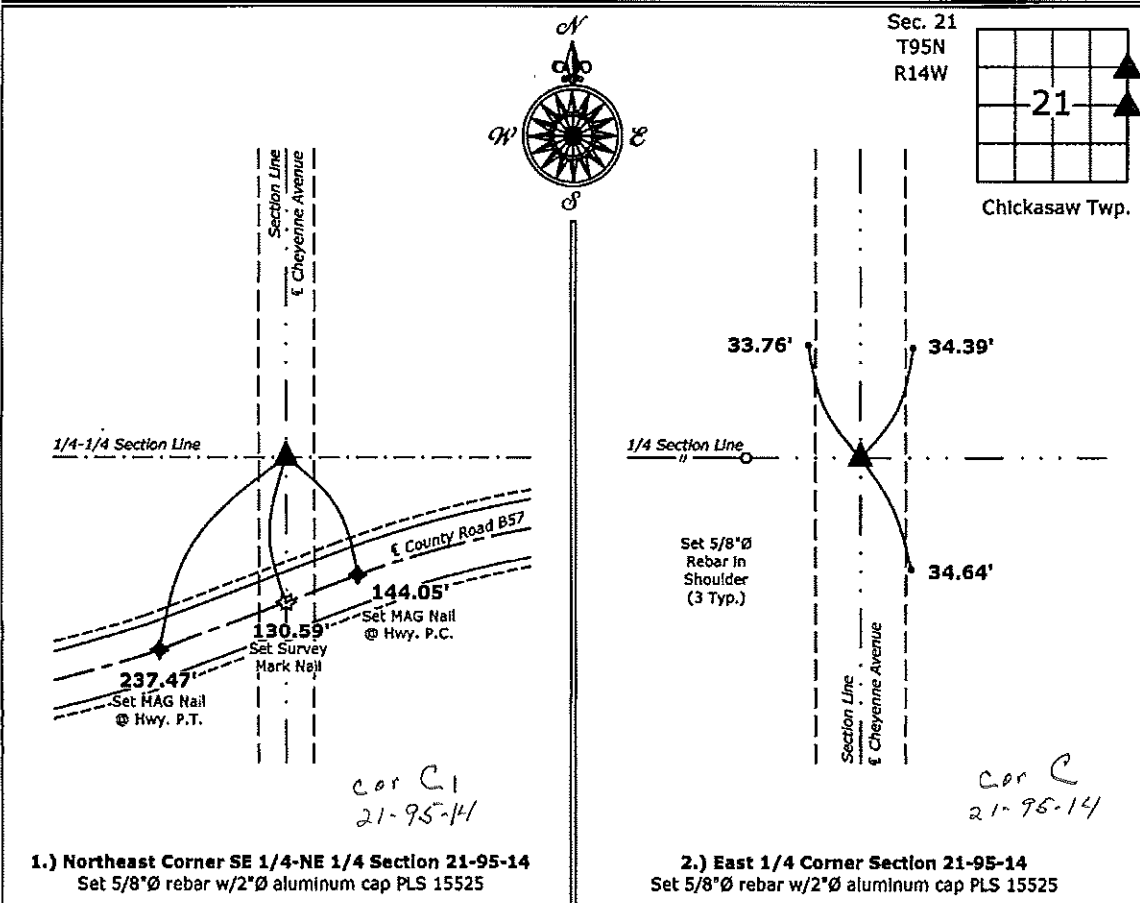
1 & 2 There is no certificate on file for this corner.
 There are no longer three valid ties of record.
 There are changes to reference ties of record.
 There is change of monumentation of record.
 To clarify description of record monument (ties).

1.) **Northeast Corner SE 1/4-NE 1/4:** Set 5/8"Ø rebar w/2"Ø aluminum cap PLS 15525 at the Westerly Extension of the Centerline Road Tangent of County Road B57 and at the split of the R.O.W. of Cheyenne Avenue as indicated on ties from County Engineers Office in Field Book Chickasaw Township Ties to Corners Sec. 21 T95N R15W Corner C1 and As-Built Plans Project C-2364.

2.) **East 1/4 Corner:** Set 5/8"Ø rebar w/2"Ø aluminum cap PLS 15525 at the split of the R.O.W. on the extension of the possession line fence to the West, per information obtained from the County Engineer's Office in Field Book Chickasaw Township Ties to Corners Sec. 21 T95N R15W Corner C.

PLAN - VIEW

(Show a minimum of three reference ties to durable physical objects, relevant monuments and physical conditions that will enable recovery of the corner.)



I hereby certify that this land surveying document was prepared and the related survey work was performed by me or under my direct personal supervision and that I am a duly licensed Land Surveyor under the laws of the State of Iowa.

Paul R. Herold 9-17-13
 Paul R. Herold Date:
 License number 15525
 My license renewal date is December 31, 2014.
 Sheets covered by this seal: Individual sheet only

List Corners to be Indexed			
Corners	Section	Twp.	Range
NE-SE-NE	21	95	14
E 1/4	21	95	14

Project Number: 2013-110
 FB: Chickasaw 5 Pgs. 53, 58-59