

Prepared by & Return to: Herold - Reicks Surveying, 10 East Main Street, New Hampton, IA 50658, Ph. 641-394-2725

**UNITED STATES PUBLIC LAND SURVEY CORNER CERTIFICATE**

16

Land Survey Monuments situated in Section 21, Township 95 North, Range 14 West of the Fifth Principal Meridian, Chickasaw County, Iowa. 1., 2.) Not previously recorded in the County Recorder's office.

This certificate is being prepared in compliance with Iowa Code Chapter 355.11 because: {

- 1 & 2  There is no certificate on file for this corner.
- There are no longer three valid ties of record.
- There are changes to reference ties of record.
- There is change of monumentation of record.
- To clarify description of record monument (ties).

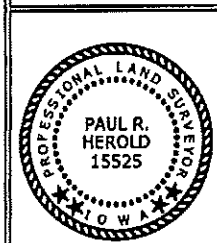
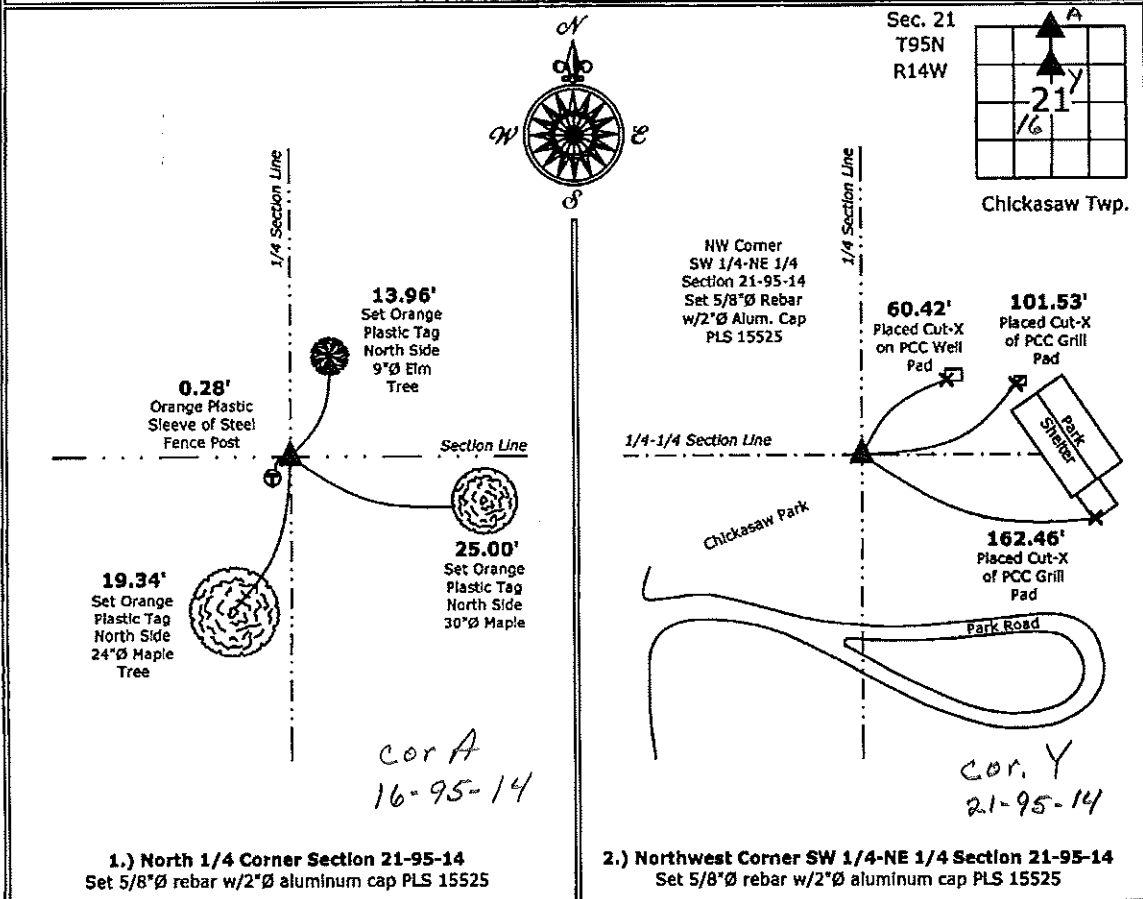
Monument Description and Remarks:

**1.) North 1/4 Corner:** Set 5/8"Ø rebar with 2"Ø aluminum cap PLS 15525 by intersecting a line from the Northwest Corner of Section 21 through the Centerline Tangent of County Road B57 with a line from the South 1/4 Corner of Section 21 through a position of the calculated Center of Section 21 by doubling the distance from the West 1/4 Corner of Section 21 to and across from the Northeast Corner NW 1/4-SW 1/4 of said Section.

**2.) Northwest Corner SW 1/4-NE 1/4:** Set 5/8"Ø rebar with 2"Ø aluminum cap PLS 15525 equidistant and online between the North 1/4 Corner and Calculated Center of Section 21.

**PLAN - VIEW**

(Show a minimum of three reference ties to durable physical objects, relevant monuments and physical conditions that will enable recovery of the corner.)



I hereby certify that this land surveying document was prepared and the related survey work was performed by me or under my direct personal supervision and that I am a duly licensed Land Surveyor under the laws of the State of Iowa.

*Paul R. Herold* 10-11-13  
 Paul R. Herold Date:

License number 15525  
 My license renewal date is December 31, 2014.  
 Sheets covered by this seal: Individual sheet only

List Corners to be Indexed			
Corners	Section	Twp.	Range
N 1/4	21	95	14
NW-SW-NE	21	95	14

Project Number: 2013-110  
 FB: Chickasaw 5 Pgs. 53, 58-59