

Prepared by & Return to Herold - Recks Surveying, 10 East Main Street, New Hampton, IA 50659, Ph. 641-394-2725

**UNITED STATES PUBLIC LAND SURVEY CORNER CERTIFICATE**

Land Survey Monuments situated in Section <sup>16</sup> 21, Township 95 North, Range 14 West of the Fifth Principal Meridian, Chickasaw County, Iowa. 1.) Not previously recorded in the County Recorder's office. 2.) Previously recorded in Doc. #2005-1554, the County Recorder's office.

This certificate is being prepared in compliance with Iowa Code Chapter 355.11 because:

- 1 & 2 There is no certificate on file for this corner.
- There are no longer three valid ties of record.
- There are changes to reference ties of record.
- There is change of monumentation of record.
- To clarify description of record monument (ties).

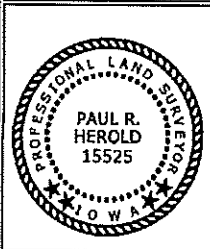
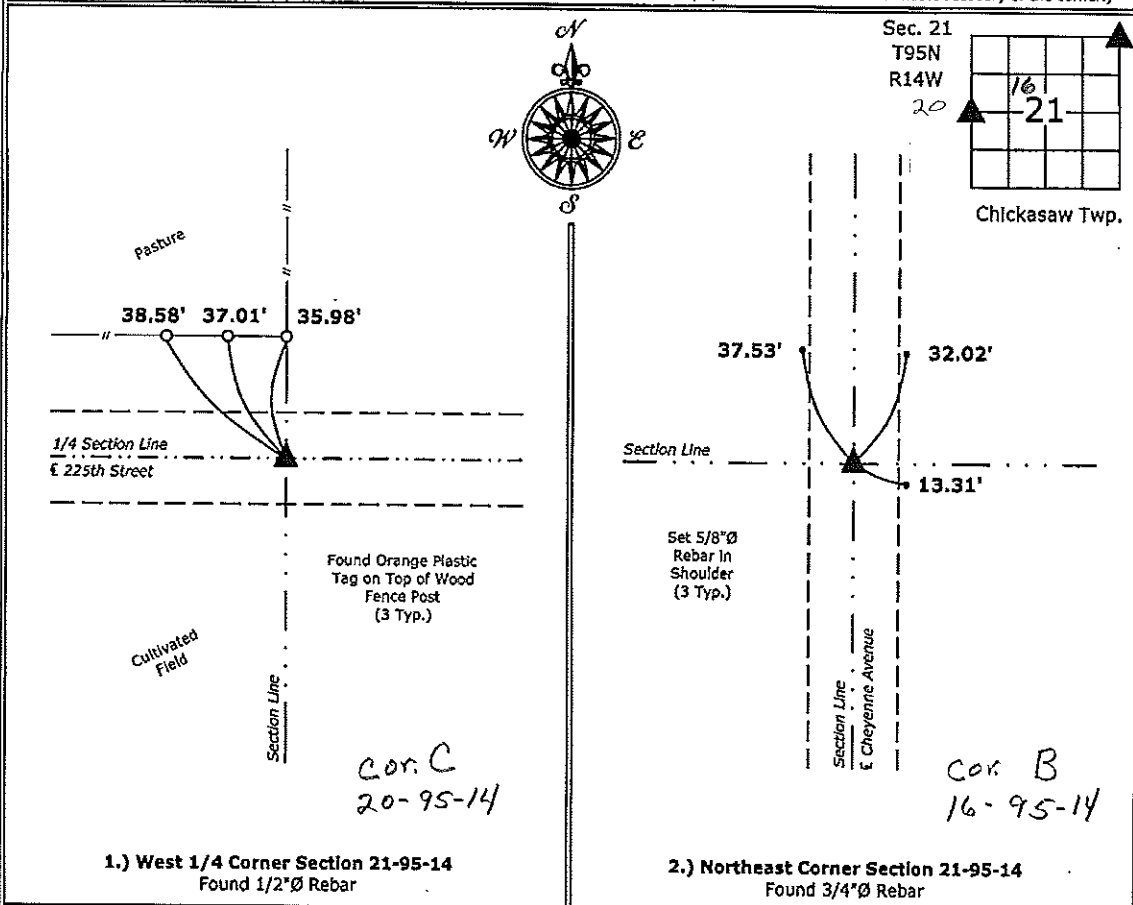
Monument Description and Remarks:

1.) **West 1/4 Corner:** Found 1/2"Ø Rebar with information obtained from the County Engineer's office in Field Book Chickasaw Twp. Corner Ties, Section 20, Corner "C".

2.) **Northeast Corner:** Found 3/4"Ø Rebar with information obtained from a previous Section Corner Certificate, all ties were missing, set new ties to update the corner.

**PLAN - VIEW**

(Show a minimum of three reference ties to durable physical objects, relevant monuments and physical conditions that will enable recovery of the corner.)



I hereby certify that this land surveying document was prepared and the related survey work was performed by me or under my direct personal supervision and that I am a duly licensed Land Surveyor under the laws of the State of Iowa.  
*Paul R. Herold* 10-11-13  
 Paul R. Herold Date:  
 License number 15525  
 My license renewal date is December 31, 2014.  
 Sheets covered by this seal: Individual sheet only

List Corners to be Indexed			
Corners	Section	Twp.	Range
W 1/4	21	95	14
NE	21	95	14

Project Number: 2013-110  
 FB: Chickasaw 5 Pgs. 53, 58-59

FILED 2005-1554  
 RECORDER'S OFFICE  
 CHICKASAW COUNTY, IOWA  
 2005 JUL 26 <sup>for 7.00</sup> AM 9 10  
 CINDY MESSERSMITH  
 COUNTY RECORDER

PREPARED BY/RETURN TO: KENNETH D. STARK STARK SURVEYING 1022 So. 7th Ave. WASH. CITY, IOWA 52499 641-423-7847

See 16-95-14  
 As referred in  
 Engr. Tie Book

UNITED STATES PUBLIC LAND SURVEY CORNER CERTIFICATE OF  
 16

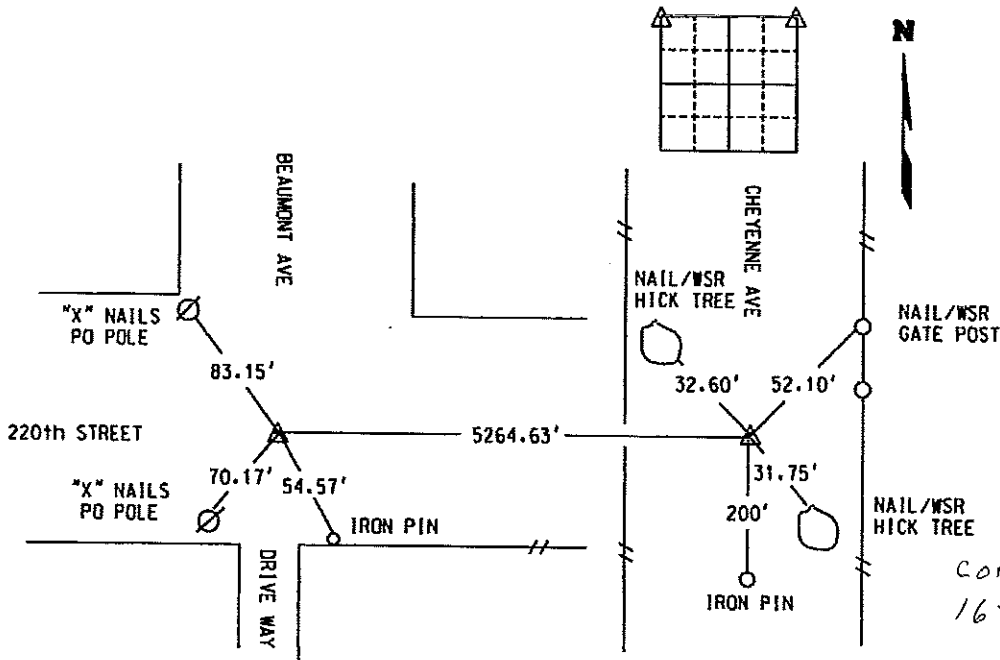
Land Survey Monuments situated in Section 21, Township 95N, Range 14W  
 of the Fifth Principal Meridian, CHICKASAW County, Iowa.

Previously recorded in NA In County Recorder's Office.  
(book, page, document number, etc.)

(Show reason for preparing this certificate, the evidence and detailed procedures used in establishing the corner positions and monumentation found or placed.)

Monument Description and Remarks:

NW COR = SET HINGE NAIL FROM COUNTY TIES  
 NE COR = FOUND IRON PIN



cor. B  
 16-95-14

**LICENSED LAND SURVEYOR**  
 KENNETH D. STARK  
 10898  
 IOWA

I hereby certify that this land surveying document was prepared and the related survey work was performed by me or under my personal supervision and that I am a duly Licensed Land Surveyor under the laws of the state of Iowa.  
*Kenneth D. Stark* Date 07-19-05  
 Kenneth D. Stark Date  
 License number 10898  
 My License renewal date is December 31, 2005  
 Pages or sheets covered by this cert. 1

List Corners to be Indexed

Corner	Section	Township	Range
NW	21	95	14
NE	21	95	14