

Section 14-95-14
As referred to in
Engr. Tie Book

TeKIPPE ENGINEERING, P.C., 128 South Vine Street, West Union, Iowa 52175 Phone (319) 422-5131

UNITED STATES PUBLIC LAND SURVEY CORNER CERTIFICATE

OF 14

Land Survey Monuments situated in Section 23, Township 95 North, Range 14 West of the Fifth Principal Meridian, CHICKASAW County, Iowa.

Previously recorded in none in County Recorder's Office.
(book, page, document number, etc.)

(Show reason for preparing this certificate, the evidence and detailed procedures used in establishing the corner positions and monumentation found or placed.)

Monument Description and Remarks: NW Corner Section 23 T95N R14W: Found 1-1/2"φ pipe with information obtained from the Chickasaw County Engineer's office in the Field Book for Chickasaw Twp. Corner Ties, Corner 'B', Section 15. Placed 1/2"φ rebar w/2"φ aluminum cap LS 7060 inside the pipe.

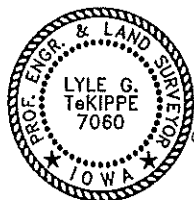
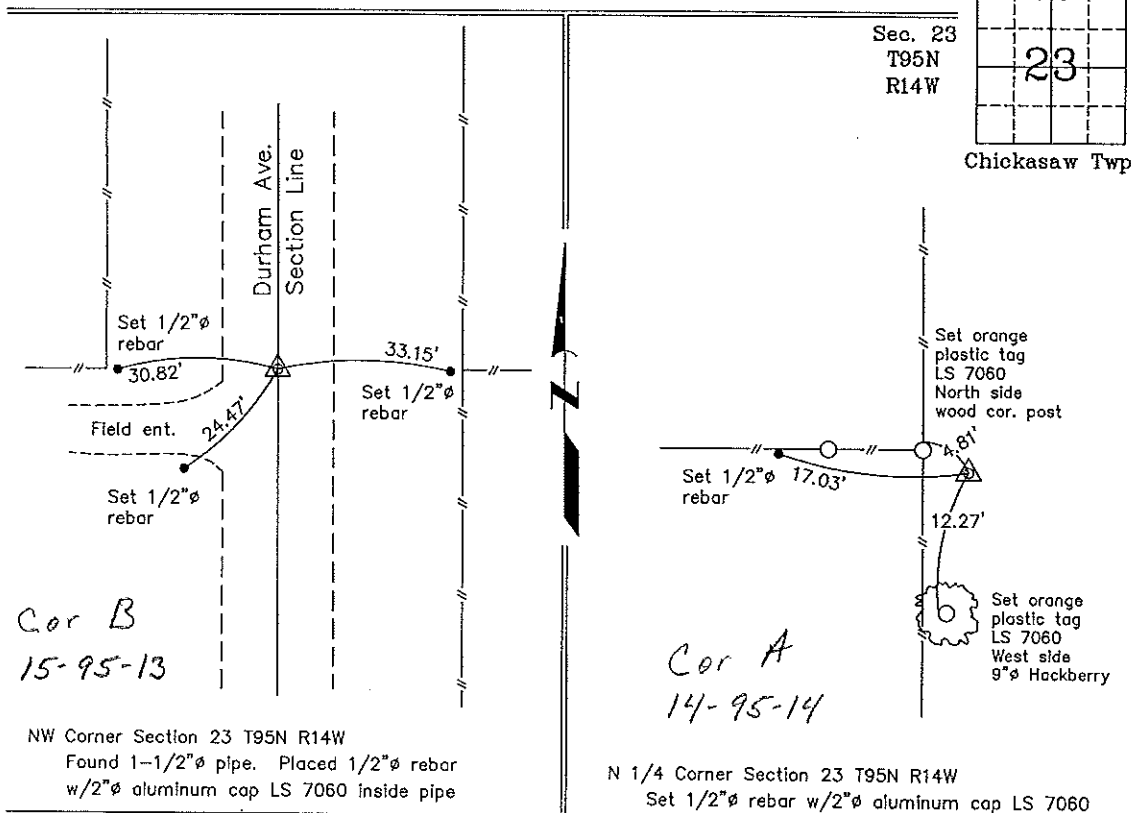
N 1/4 Corner Section 23 T95N R14W: Set 1/2"φ rebar w/2"φ aluminum cap LS 7060 by doubling the distance from the Center of the Section to and across the SW Corner NW 1/4 - NE 1/4.

PLAN - VIEW

(Show a minimum of three reference ties to durable physical objects, relevant monuments and physical conditions that will enable recovery of the corner.)

Project Number 00126.18
FB 486 PG. 70-74

Cor. B sec 15 and physical Cor. A Sec 14



I hereby certify that this land surveying document was prepared and the related survey work was performed by me or under my direct personal supervision and that I am a duly licensed Land Surveyor under the laws of the State of Iowa.

Lyle G. TeKippe Date
Lyle G. TeKippe
License number 7060
My license renewal date is December 31, 2000.
Sheets covered by this seal: Individual

List Corners to be Indexed			
Corners	Section	Twp.	Range
NW	23	95N	14W
N 1/4	23	95N	14W

Filed 7-27-00

2000-1288

County Engineer's Copy