

Section 23-95-14
As referred to in
Engr. Tie Book

2007-1962

Herold - Recks Surveying, 25 1/2 East Main Street, Suite 204, New Hampton, IA 50659, Ph. 641-384-2725

UNITED STATES PUBLIC LAND SURVEY CORNER CERTIFICATE

Land Survey Monuments situated in:
Section 24, Township 95 North, Range 14 West of the Fifth Principal Meridian,
Chickasaw County, Iowa. Previously recorded in Book 153, Page 38
in County Recorder's Office. (book, page, document number, etc.)

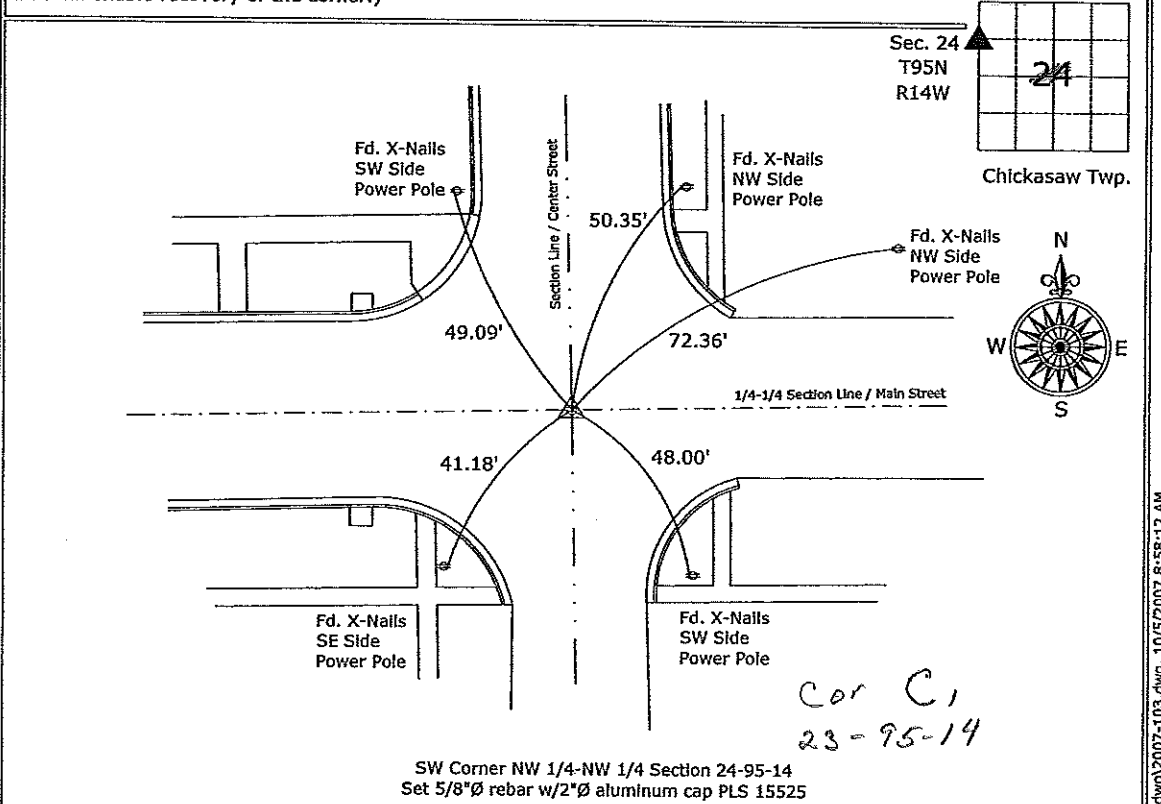
(Show reason for preparing this certificate, the evidence and detailed procedures used in establishing the corner positions and monumentation found or placed.)

Monument Description and Remarks:

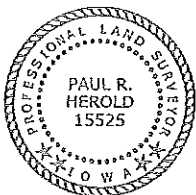
Southwest Corner of the Northwest Quarter of the Northwest Quarter of Section 24-95-14, Set 5/8"Ø Rebar w/ 2"Ø Alum. Cap PLS 15525, the monument called for on the previous Section Corner Certificate had deteriorated to the point that a precise position was questionable, therefor we drilled a hole through the PCC paving and set a new monument and updated the ties.

PLAN - VIEW

(Show a minimum of three reference ties to durable physical objects, relevant monuments and physical conditions that will enable recovery of the corner.)



SW Corner NW 1/4-NW 1/4 Section 24-95-14
Set 5/8"Ø rebar w/2"Ø aluminum cap PLS 15525



I hereby certify that this land surveying document was prepared and the related survey work was performed by me or under my direct personal supervision and that I am a duly licensed Land Surveyor under the laws of the State of Iowa.

Paul R. Herold 10-5-07
Paul R. Herold Date:

License number 15525
My license renewal date is December 31, 2008.
Sheets covered by this seal: Individual sheet only

List Corners to be Indexed			
Corners	Section	Twp.	Range
SW-NW-NW	24	95	14

Project Number: 2007-085
FB: Ionia 1, Pgs. 1-3

UNITED STATES PUBLIC LAND SURVEY CORNER CERTIFICATE

OF

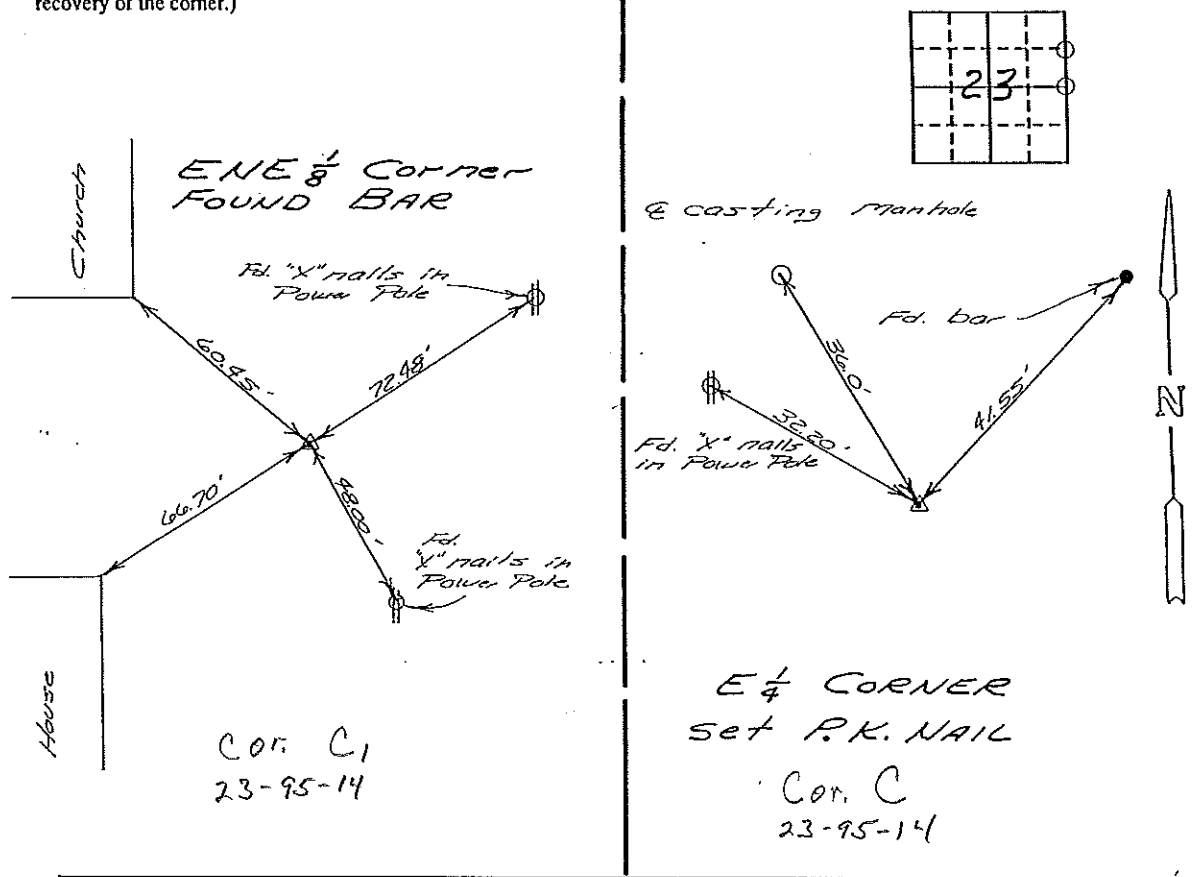
Land Survey Monuments situated in Section 23, Township 95N, Range 14W, of the Fifth Principal Meridian, Chickasaw County, Iowa.
 Previously recorded in does not apply in County Recorder's Office.
(book, page, document number, etc.)

(Show reason for preparing this certificate, the evidence and detailed procedures used in establishing the corner positions and monumentation found or placed.)

Monument Description and Remarks: see below

PLAN - VIEW

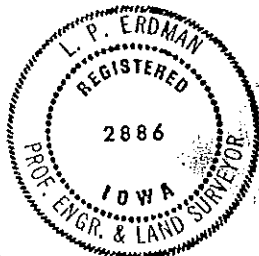
(Show a minimum of three reference ties to durable physical objects, relevant monuments and physical conditions that will enable recovery of the corner.)



I hereby certify that the survey work was completed and this certificate was prepared by me or under my direct personal supervision and that I am a duly registered land surveyor under the laws of the state of Iowa.

Signature: *L. P. Erdman*
 Name typed or printed: L. P. Erdman
 Date: 7-21-93 Reg. No. 2886

SEAL



Corners	Section	Twp	Range
ENE 1/8	23	95N	14W
E 1/4	23	95N	14W

Placed in the Book 9/15/93