

UNITED STATES PUBLIC LAND SURVEY CORNER CERTIFICATE

OF

Land Survey Monuments situated in Section 23, Township 95 North, Range 14 West of the Fifth Principal Meridian, CHICKASAW County, Iowa. Previously recorded in (1) Book 153, Page 39 (2) none in County Recorder's Office.  
(book, page, document number, etc.)

(Show reason for preparing this certificate, the evidence and detailed procedures used in establishing the corner positions and monumentation found or placed.)

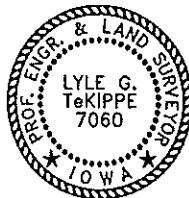
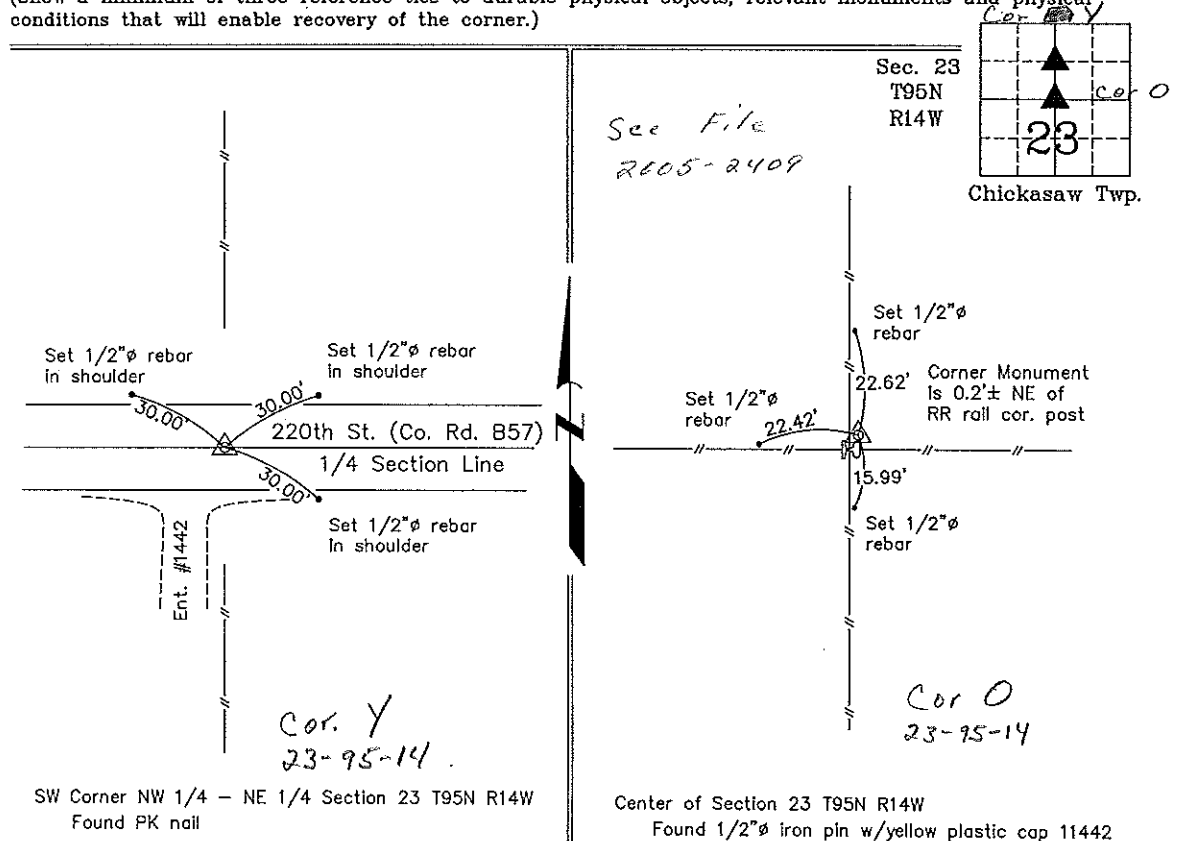
Monument Description and Remarks: (1) SW Corner NW 1/4-NE 1/4 Section 23 T95N R14W: Found PK nail with information obtained from a Section Corner Certificate recorded in the Chickasaw County Recorder's Office on September 14, 1993, in Book 153, Page 39. The previous ties were not found. Three ties were added.

(2) Center of Section 23 T95N R14W: Found 1/2"Ø iron pin w/yellow plastic cap 11442 at the intersection of quarter section line fences.

PLAN - VIEW

Project Number 00126.15  
FR 486 PG. 70-74

(Show a minimum of three reference ties to durable physical objects, relevant monuments and physical conditions that will enable recovery of the corner.)



I hereby certify that this land surveying document was prepared and the related survey work was performed by me or under my direct personal supervision and that I am a duly licensed Land Surveyor under the laws of the State of Iowa.

*Lyle G. TeKippe* 7-25-00  
Lyle G. TeKippe Date  
License number 7060  
My license renewal date is December 31, 2000.  
Sheets covered by this seal: Individual

List Corners to be Indexed			
Corners	Section	Twp.	Range
SW-NW-NE	23	95N	14W
Center	23	95N	14W

Filed 7-27-00