

Prepared by & Return to: Herold - Reicks Surveying, 10 East Main Street, New Hampton, IA 50659, Ph. 641-394-2725

**UNITED STATES PUBLIC LAND SURVEY CORNER CERTIFICATE**

Land Survey Monuments situated in Section 23, Township 95 North, Range 14 West of the Fifth Principal Meridian, Chickasaw County, Iowa. Previously not recorded in the County Recorder's office.

This certificate is being prepared in compliance with Iowa Code Chapter 355.11 because:

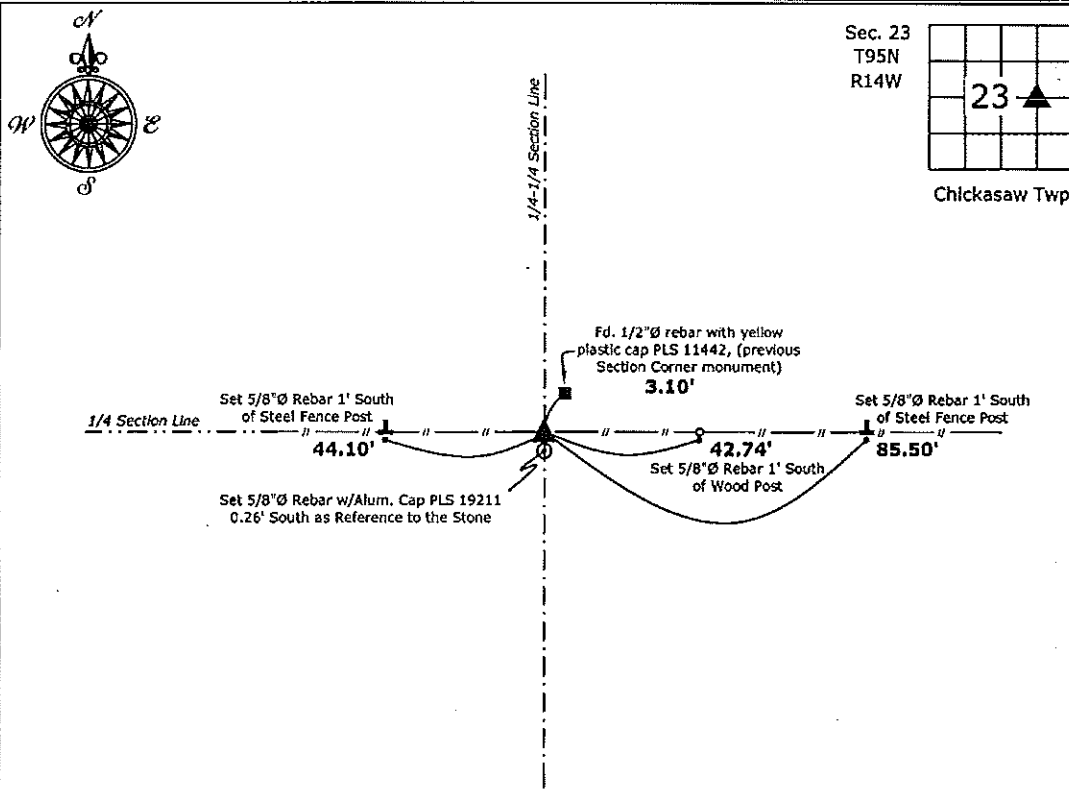
- There is no certificate on file for this corner.
- There are no longer three valid ties of record.
- There are changes to reference ties of record.
- There is change of monumentation of record.
- To clarify description of record monument (ties).

**Monument Description and Remarks:**

**Southwest Corner SE 1/4-NE 1/4:** Fd. 4" x 6" x 18" Blue Granite Stone along a downed fence per information obtained from the County Engineer's office during recovery of previously monumented Section corner. Previous monument (1/2"Ø rebar with yellow plastic cap PLS #11442) was attempted to be set equidistant and online between the East 1/4 corner and Center of Section. Excepted the stone as the correct corner and added reference ties to update the corner.

**PLAN - VIEW**

(Show a minimum of three reference ties to durable physical objects, relevant monuments and physical conditions that will enable recovery of the corner.)



**Southwest Corner SE 1/4-NE 1/4 Section 23-95-14**  
 Fd. 4" x 6" x 18" Blue Granite Stone



I hereby certify that this land surveying document was prepared and the related survey work was performed by me or under my direct personal supervision and that I am a duly licensed Land Surveyor under the laws of the State of Iowa.  
*Kirk D. Reicks* 8-6-14  
 Kirk D. Reicks Date:  
 License number 19211  
 My license renewal date is December 31, 2014.  
 Sheets covered by this seal: Individual sheet only

| List Corners to be Indexed |         |      |       |
|----------------------------|---------|------|-------|
| Corners                    | Section | Twp. | Range |
| SW-SE-NE                   | 23      | 95   | 14    |
| Project Number: 2014-121   |         |      |       |
| FB: Ionia 1, Pg. 6         |         |      |       |

File: S:\\_C3D Projects\County Control Systems\CHICKASAW\CHICK-33 (Ionia)\CHICK-33.dwg, 8/6/2014 6:49:12 AM

UNITED STATES PUBLIC LAND SURVEY CORNER CERTIFICATE

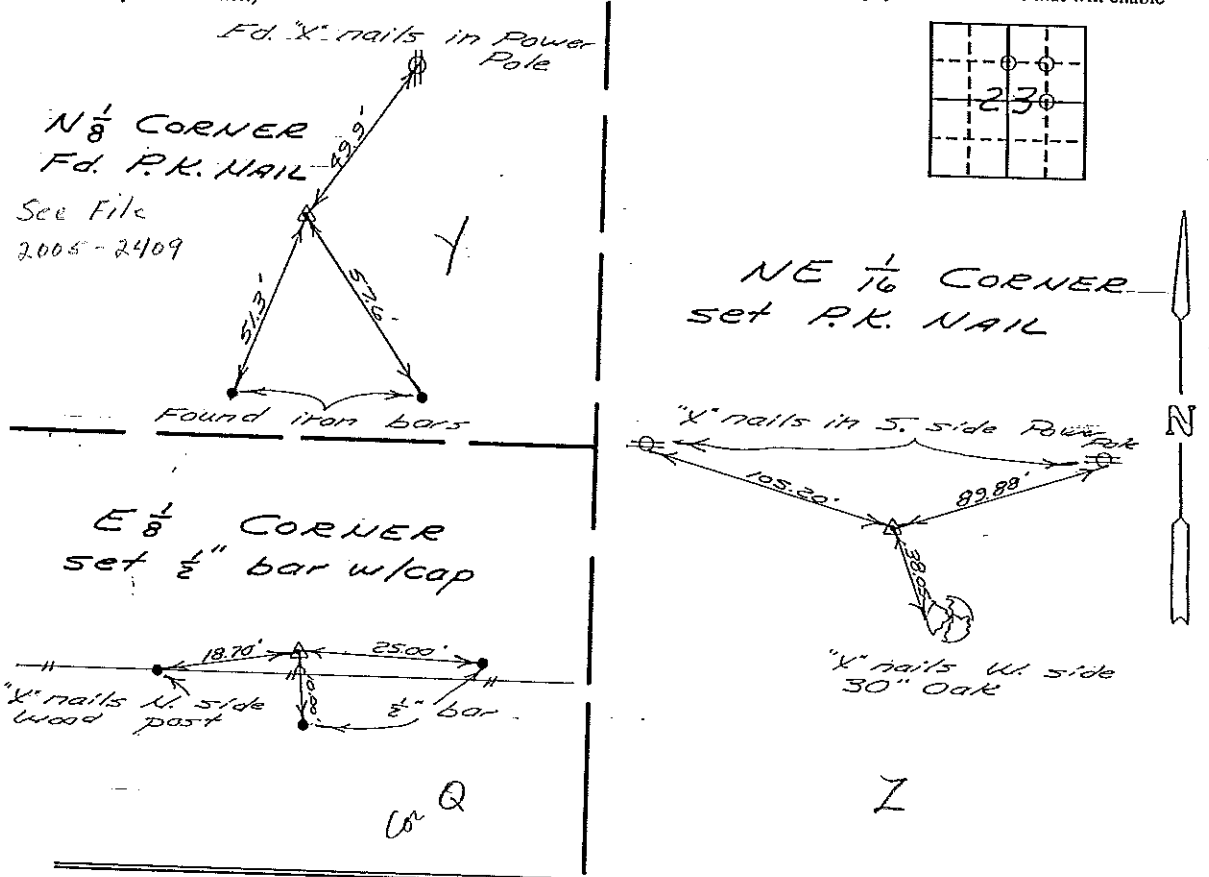
OF

Land Survey Monuments situated in Section 23, Township 95N, Range 14W, of the Fifth Principal Meridian, Chickasaw County, Iowa. Previously recorded in does not apply in County Recorder's Office. (book, page, document number, etc.)

(Show reason for preparing this certificate, the evidence and detailed procedures used in establishing the corner positions and monumentation found or placed.)  
 Monument Description and Remarks: see below

PLAN - VIEW

(Show a minimum of three reference ties to durable physical objects, relevant monuments and physical conditions that will enable recovery of the corner.)



I hereby certify that the survey work was completed and this certificate was prepared by me or under my direct personal supervision and that I am a duly registered land surveyor under the laws of the state of Iowa.

Signature: L.P. Erdman  
 Name typed or printed: L.P. Erdman  
 Date: 7-24-93 Reg. No. 2886

| Corners | List Corners to be Indexed |     |       |
|---------|----------------------------|-----|-------|
|         | Section                    | Twp | Range |
| N 1/8   | 23                         | 95N | 14W   |
| E 1/8   | 23                         | 95N | 14W   |
| NE 1/16 | 23                         | 95N | 14W   |



SEAL

Placed in  
 This Book 9/15/93