

UNITED STATES PUBLIC LAND SURVEY CORNER CERTIFICATE

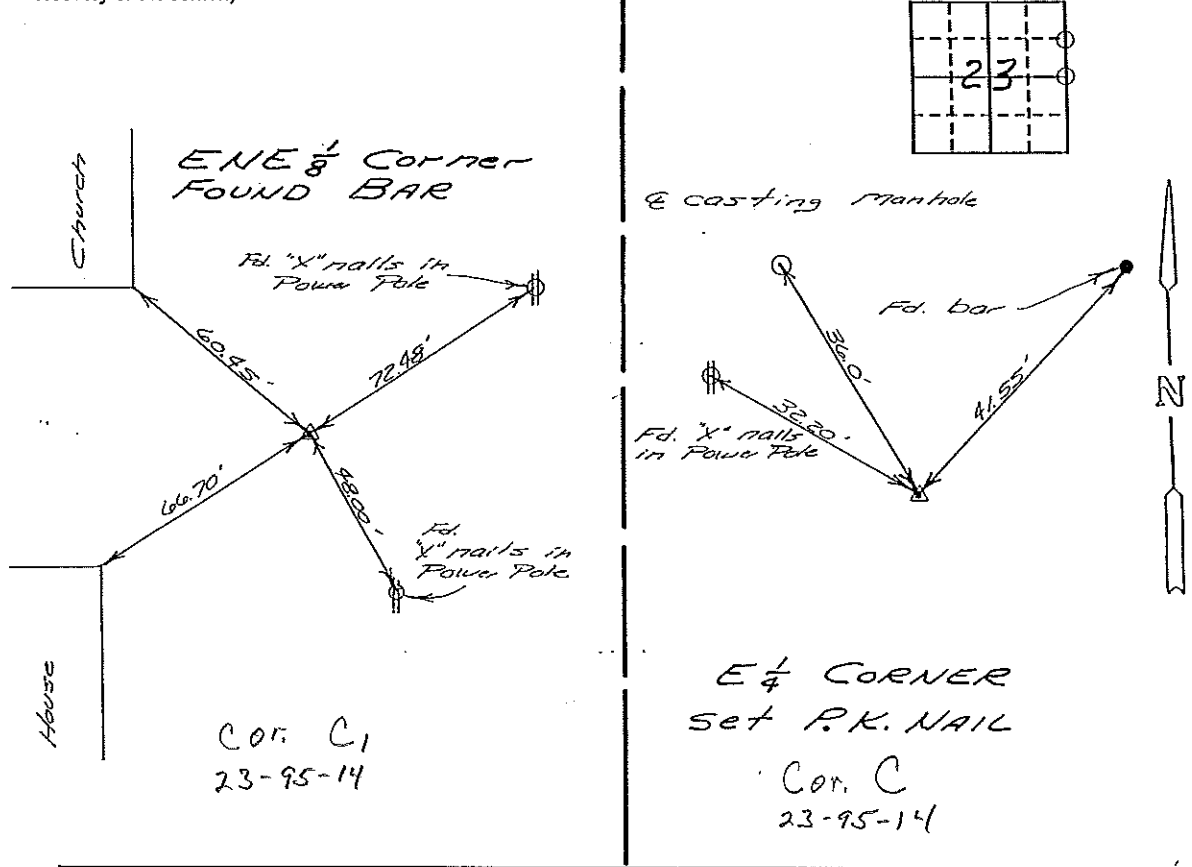
OF

Land Survey Monuments situated in Section 23, Township 95N, Range 14W, of the Fifth Principal Meridian, Chickasaw County, Iowa.
 Previously recorded in does not apply in County Recorder's Office.
(book, page, document number, etc.)

(Show reason for preparing this certificate, the evidence and detailed procedures used in establishing the corner positions and monumentation found or placed.)
 Monument Description and Remarks: see below

PLAN - VIEW

(Show a minimum of three reference ties to durable physical objects, relevant monuments and physical conditions that will enable recovery of the corner.)



I hereby certify that the survey work was completed and this certificate was prepared by me or under my direct personal supervision and that I am a duly registered land surveyor under the laws of the state of Iowa.

Signature: *L.P. Erdman*
 Name typed or printed: L. P. Erdman

Date: 7-21-93 Reg. No. 2886

Corners	Section	Twp	Range
ENE 1/8	23	95N	14W
E 1/4	23	95N	14W

SEAL



Placed in the Book 9/15/93