

Prepared by & Return to: Kirk D. Reicks, HRS, L.L.C., 10 East Main Street, New Hampton, IA 50659, Phone 641-394-2725

United States Public Land Survey Corner Certificate

Land Survey Monument situated in
 Section 23, Township 95 North, Range 14 West of the Fifth Principal Meridian, Chickasaw County, Iowa.
 Not on file in the County Recorder's Office.

This certificate is being prepared in compliance with Iowa Code Chapter 355.11 because:

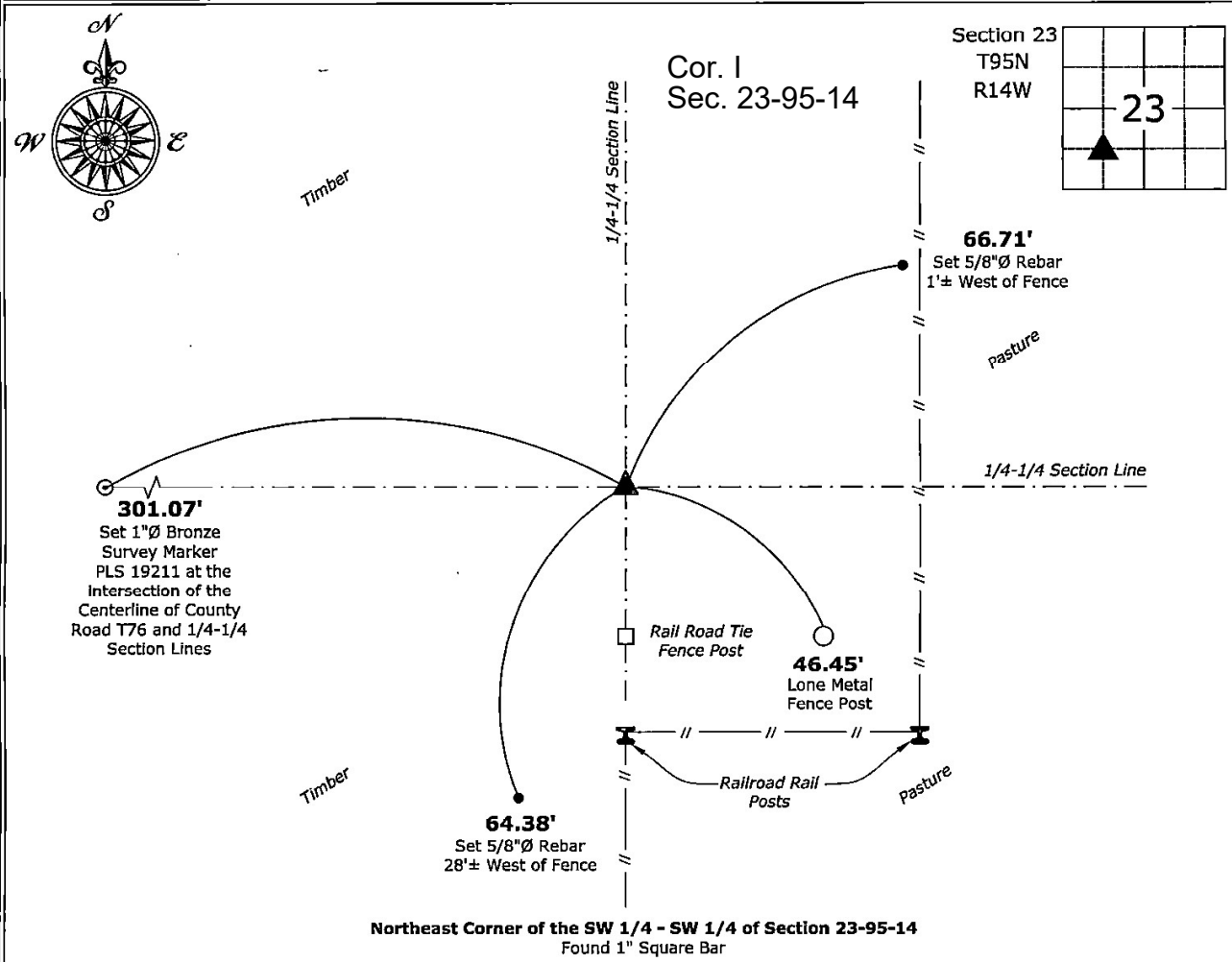
- There is no certificate on file for this corner.
- There are no longer three valid ties of record.
- There are changes to reference ties of record.
- There is change of monumentation of record.
- To clarify description of record monument (ties).

Monument Description and Remarks:

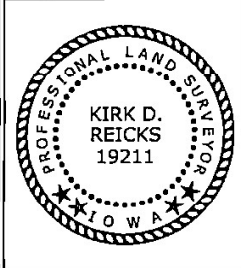
Northeast Corner of the SW 1/4 - SW 1/4: Found 1" Square Bar with information obtained from the Chickasaw County Engineer's Office, in Field Book Chickasaw Township Ties to Corners, Section 32, Corner G. Also with information from 1954 Grading Plans, Project No. S-2389(1) and 1971 Paving Plans, Project No. S-2389(9)--50-19.

Plan View - Not to Scale

(Show a minimum of three reference ties to durable physical objects, relevant monuments and physical conditions that will enable recovery of the corner.)



Northeast Corner of the SW 1/4 - SW 1/4 of Section 23-95-14
 Found 1" Square Bar



I hereby certify that this land surveying document was prepared and the related survey work was performed by me or under my direct personal supervision and that I am a duly licensed Land Surveyor under the laws of the State of Iowa.

Kirk D. Reicks 10-6-2023
 Kirk D. Reicks Date:

License number 19211
 My license renewal date is December 31, 2024.
 Sheets covered by this seal: Individual sheet only

List Corner to be Indexed			
Corner	Section	Township	Range
NE-SW-SW	23	95	14
Project Number: 2023-117			
FB: Chickasaw 12, Page(s) 31-32			

File: S:_Projects - NHO\County Control Systems - NHO\CHICKASAW\CHICK-32 - 2022.dwg, 10/6/2023 2:13:01 PM