

Section 14-95-14  
 As referred to in  
 Eng. Tie Book

UNITED STATES PUBLIC LAND SURVEY CORNER CERTIFICATE

OF 14

Land Survey Monuments situated in Section 23, Township 95 North, Range 14 West of the Fifth Principal Meridian, CHICKASAW County, Iowa.

Previously recorded in none in County Recorder's Office.  
 (book, page, document number, etc.)

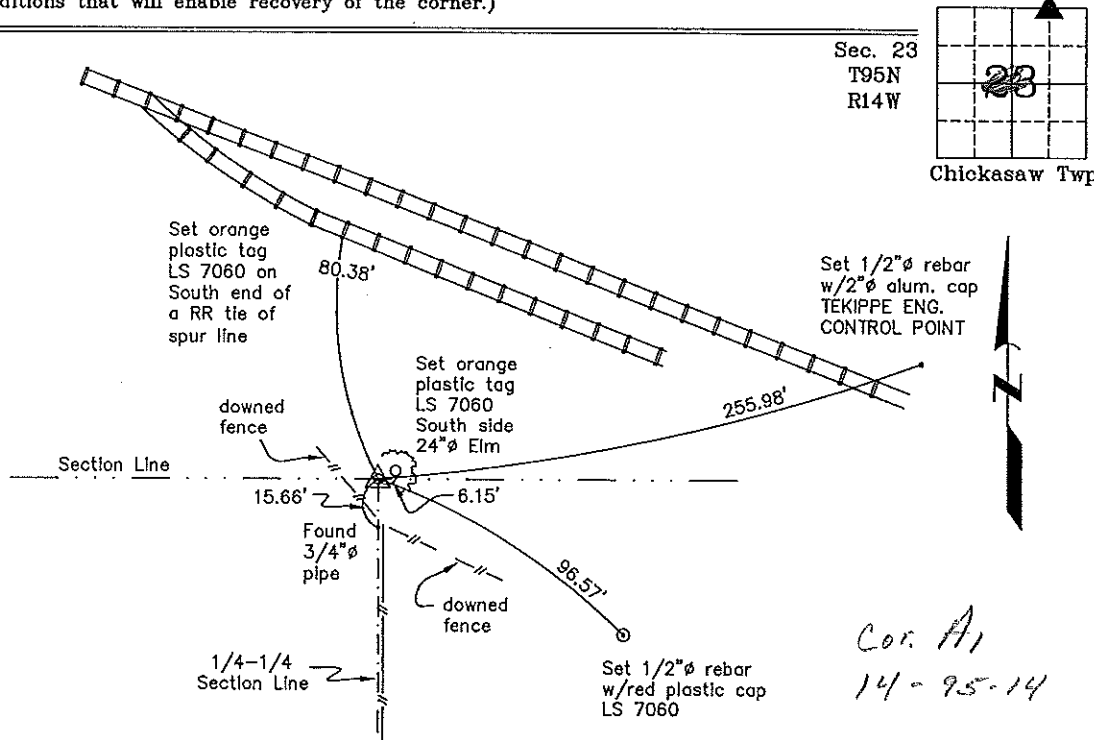
(Show reason for preparing this certificate, the evidence and detailed procedures used in establishing the corner positions and monumentation found or placed.)

Monument Description and Remarks: NW Corner NE 1/4 - NE 1/4 Section 23 T95N R14W:  
 Set 1/2"  $\phi$  rebar w/2"  $\phi$  aluminum cap LS 7060 by extending a line from the SW Corner SE 1/4 - NE 1/4 through a property corner on the 1/4 - 1/4 Section Line, a found 3/4"  $\phi$  pipe, and intersecting the line between the N 1/4 Corner and the NE Corner of Section 23.

PLAN - VIEW

Project Number 00125.1S  
 FL 48B PG. 70-74

(Show a minimum of three reference ties to durable physical objects, relevant monuments and physical conditions that will enable recovery of the corner.)



NW Corner NE 1/4 - NE 1/4 Section 23 T95N R14W  
 Set 1/2"  $\phi$  rebar w/2"  $\phi$  aluminum cap LS 7060



I hereby certify that this land surveying document was prepared and the related survey work was performed by me or under my direct personal supervision and that I am a duly licensed Land Surveyor under the laws of the State of Iowa.

*Lyle G. TeKippe* 7-25-00  
 Lyle G. TeKippe Date

License number 7060  
 My license renewal date is December 31, 2000.  
 Sheets covered by this seal: Individual

List Corners to be Indexed			
Corners	Section	Twp.	Range
NW-NE-NE	23	95N	14W

Filed 7-27-00