

Section 14-95-14
 As referred to in
 Eng'r Tie Book

TeKIPPE ENGINEERING, P.C., 128 South Vine Street, West Union, Iowa 52175 Phone (319) 422-5131

UNITED STATES PUBLIC LAND SURVEY CORNER CERTIFICATE

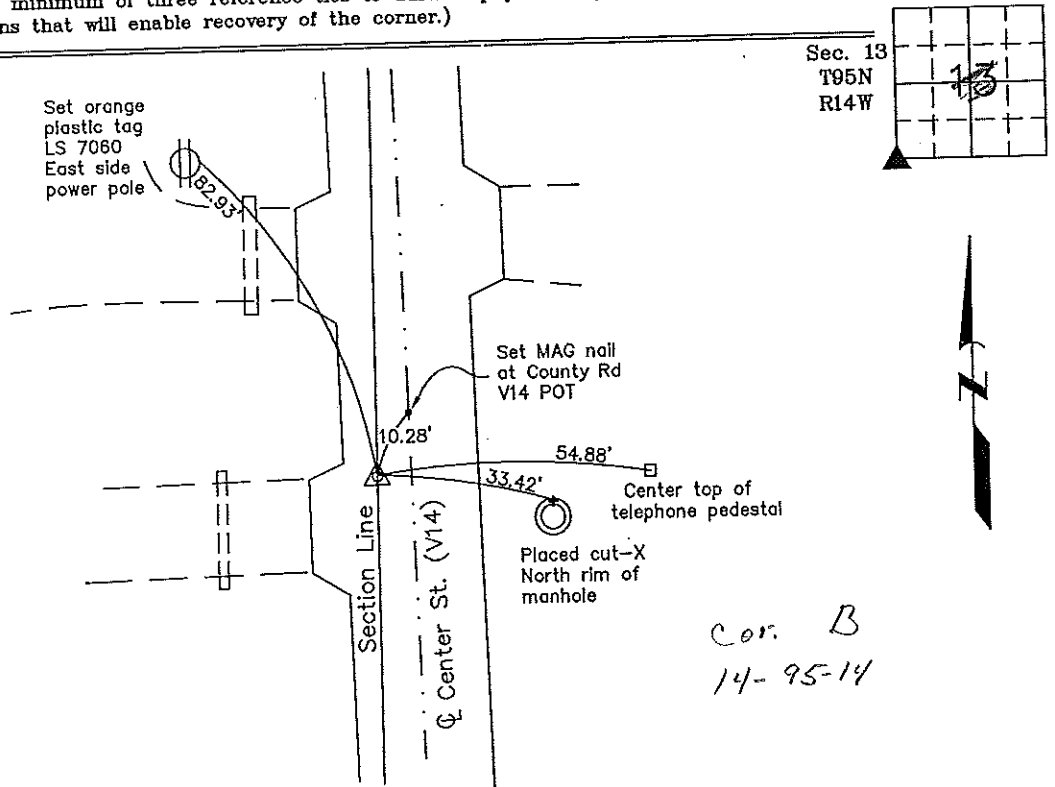
OF 14
 Land Survey Monuments situated in Section 13, Township 95 North, Range
14 West, of the Fifth Principal Meridian, CHICKASAW County, Iowa.
 Previously recorded in none in County Recorder's Office.
(book, page, document number, etc.)

(Show reason for preparing this certificate, the evidence and detailed procedures used in establishing the corner positions and monumentation found or placed.)

Monument Description and Remarks: SW Corner Section 13 T95N R14W: Set MAG nail w/stainless steel washer 7060 by doubling the distance from the E 1/4 Corner Section 14 T95N R14W to and across the SE Corner NE 1/4-SE 1/4 Section 14 T95N R14W.

PLAN - VIEW

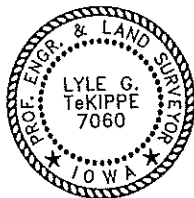
(Show a minimum of three reference ties to durable physical objects, relevant monuments and physical conditions that will enable recovery of the corner.)



Cor. B
 14-95-14

SW Corner Section 13 T95N R14W
 Set MAG nail w/stainless steel washer 7060

I hereby certify that this land surveying document was prepared and the related survey work was performed by me or under my direct personal supervision and that I am a duly licensed Land Surveyor under the laws of the State of Iowa.



Lyle G. TeKippe 3-24-99
 Lyle G. TeKippe Date
 License number 7060
 My license renewal date is December 31, 2000.
 Sheets covered by this seal: Individual

List Corners to be Indexed			
Corners	Section	Twp.	Range
SW	13	95N	14W

Cor B 14-95-14
 Placed in tie book 3/25/99
 JFM