

Section 22-95-14
 As referred to in
 Engr. Tie Book

PREPARED BY/RETURN TO: KENNETH D. STARK STARK SURVEYING 1622 So. Tall Ave. WASON CITY, IOWA 50401 641-423-7947

UNITED STATES PUBLIC LAND SURVEY CORNER CERTIFICATE OF

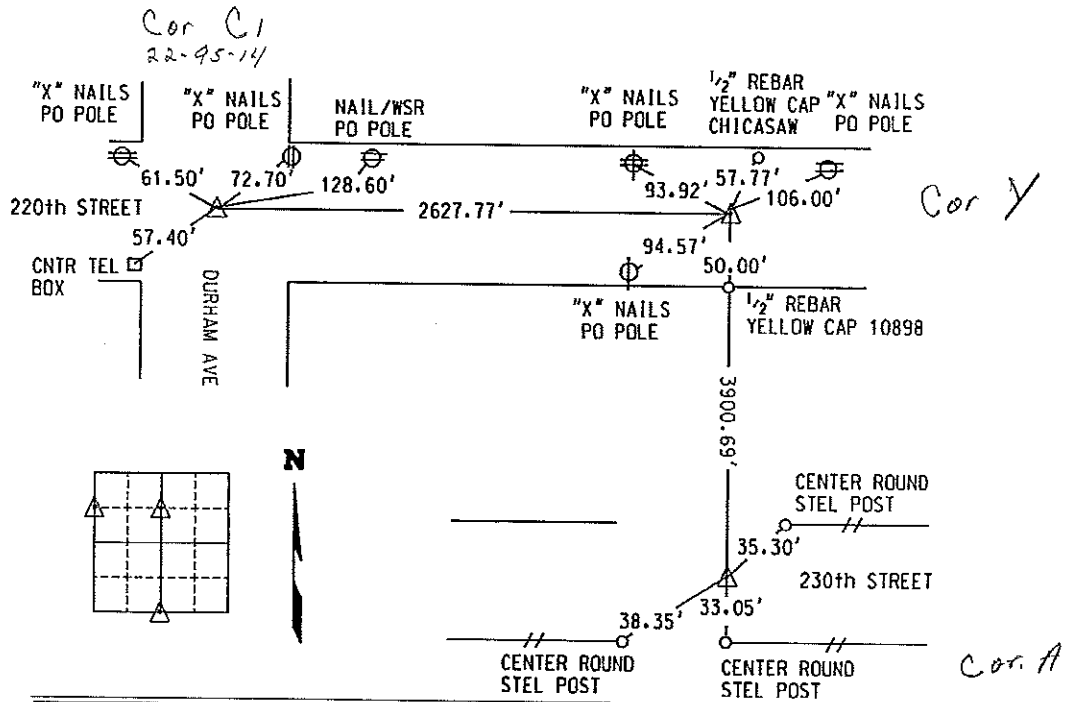
Land Survey Monuments situated in Section 23, Township 95N, Range 14W
 of the Fifth Principal Meridian, CHICKASAW County, Iowa.

Previously recorded in NA in County Recorder's Office.
(book, page, document number, etc.)

(Show reason for preparing this certificate, the evidence and detailed procedures used in establishing the corner positions and monumentation found or placed.)

Monument Description and Remarks:

NW COR SW $\frac{1}{4}$ NW $\frac{1}{4}$	= FOUND P-K NAIL FLUSH PER COUNTY RECORDS
NE COR SE $\frac{1}{4}$ NW $\frac{1}{4}$	= FOUND P-K NAIL FLUSH PER COUNTY RECORDS
S $\frac{1}{4}$ COR	= FOUND $\frac{1}{2}$ " IRON PIN 0.3' DEEP PER COUNTY RECORDS



LICENSED LAND SURVEYOR
 KENNETH D. STARK
 10898
 IOWA

I hereby certify that this land surveying document was prepared and the related survey work was performed by me or under my personal supervision and that I am a duly licensed Land Surveyor under the laws of the state of Iowa.
 Kenneth D. Stark Date 11/02/2005
 License number 10898
 My License renewal date is December 31, 2005
 Pages or sheets covered by this cert. 1

List Corners to be Indexed

Corner	Section	Township	Range
NW COR SW $\frac{1}{4}$ NW $\frac{1}{4}$	23	95	14
NE COR SE $\frac{1}{4}$ NW $\frac{1}{4}$	23	95	14
S $\frac{1}{4}$ COR	23	95	14

UNITED STATES PUBLIC LAND SURVEY CORNER CERTIFICATE

OF

Land Survey Monuments situated in Section 23, Township 95 North, Range 14 West of the Fifth Principal Meridian, CHICKASAW County, Iowa. Previously recorded in (1) Book 153, Page 39 (2) none in County Recorder's Office.
(book, page, document number, etc.)

(Show reason for preparing this certificate, the evidence and detailed procedures used in establishing the corner positions and monumentation found or placed.)

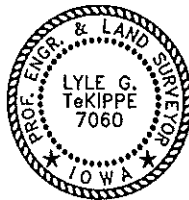
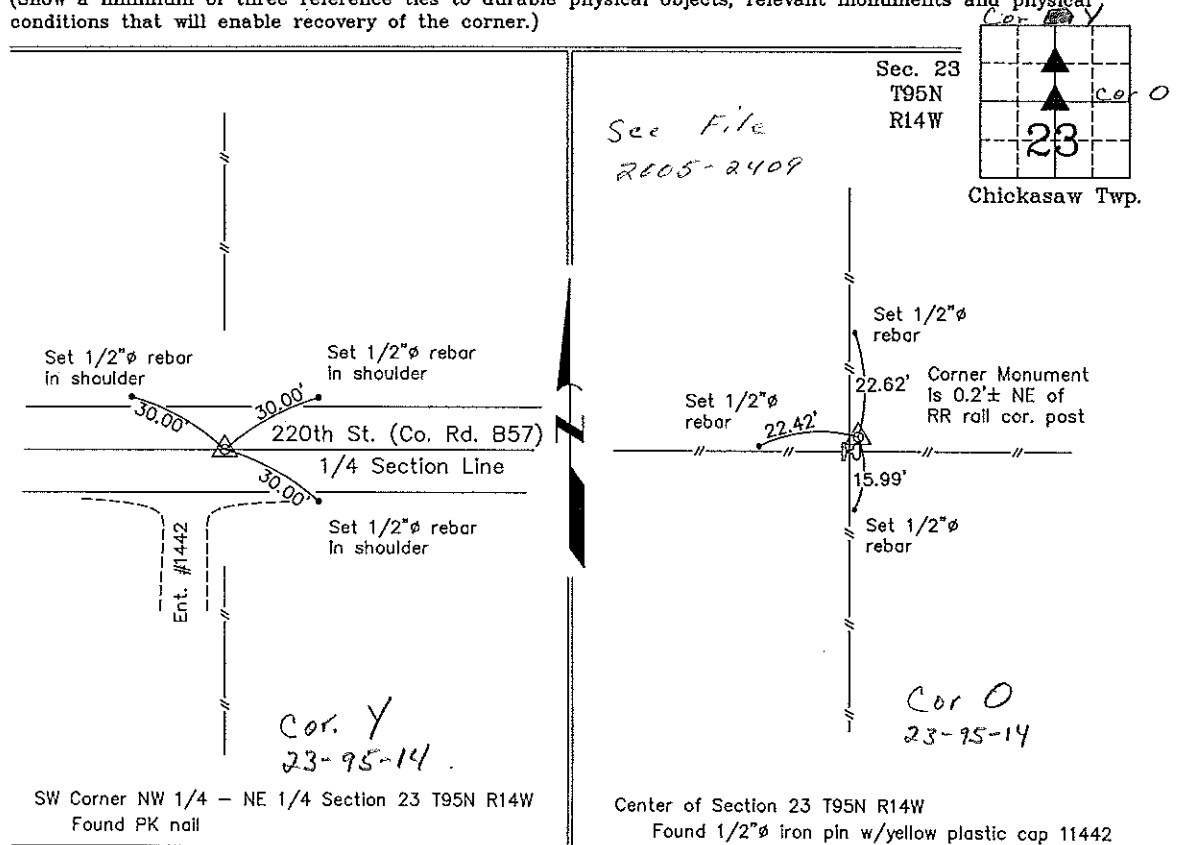
Monument Description and Remarks: (1) SW Corner NW 1/4-NE 1/4 Section 23 T95N R14W: Found PK nail with information obtained from a Section Corner Certificate recorded in the Chickasaw County Recorder's Office on September 14, 1993, in Book 153, Page 39. The previous ties were not found. Three ties were added.

(2) Center of Section 23 T95N R14W: Found 1/2"Ø iron pin w/yellow plastic cap 11442 at the intersection of quarter section line fences.

PLAN - VIEW

Project Number 00126.15
FR 486 PG. 70-74

(Show a minimum of three reference ties to durable physical objects, relevant monuments and physical conditions that will enable recovery of the corner.)



I hereby certify that this land surveying document was prepared and the related survey work was performed by me or under my direct personal supervision and that I am a duly licensed Land Surveyor under the laws of the State of Iowa.

Lyle G. TeKippe 7-25-00
Lyle G. TeKippe Date
License number 7060
My license renewal date is December 31, 2000.
Sheets covered by this seal: Individual

List Corners to be Indexed			
Corners	Section	Twp.	Range
SW-NW-NE	23	95N	14W
Center	23	95N	14W

Filed 7-27-00

UNITED STATES PUBLIC LAND SURVEY CORNER CERTIFICATE

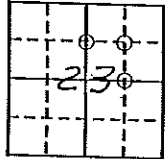
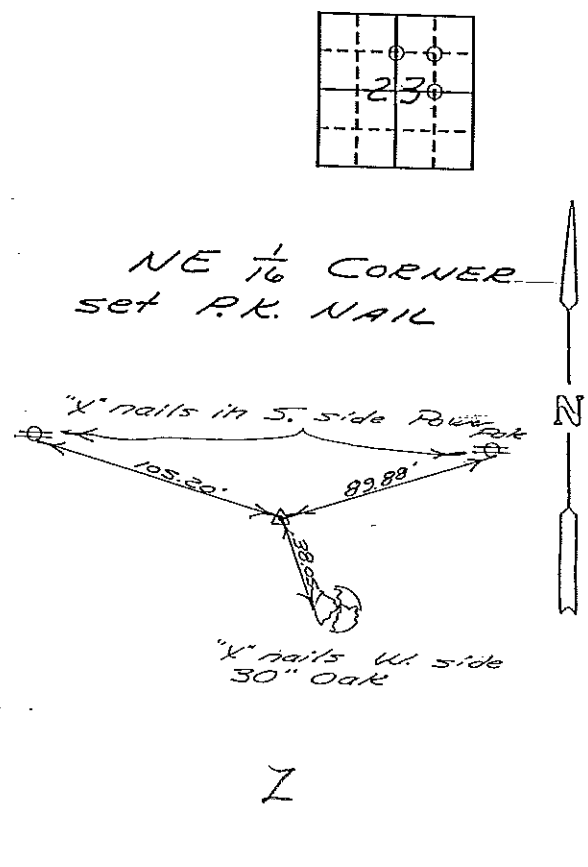
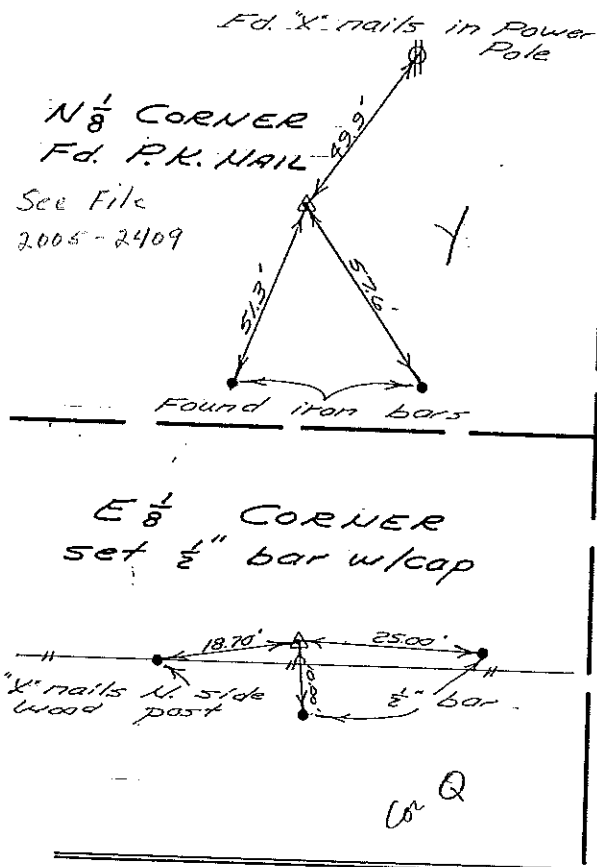
OF

Land Survey Monuments situated in Section 23, Township 95N, Range 14W, of the Fifth Principal Meridian, Chickasaw County, Iowa. Previously recorded in does not apply in County Recorder's Office.

(Show reason for preparing this certificate, the evidence and detailed procedures used in establishing the corner positions and monumentation found or placed.)
 Monument Description and Remarks: see below

PLAN - VIEW

(Show a minimum of three reference ties to durable physical objects, relevant monuments and physical conditions that will enable recovery of the corner.)



I hereby certify that the survey work was completed and this certificate was prepared by me or under my direct personal supervision and that I am a duly registered land surveyor under the laws of the state of Iowa.

Signature: L.P. Erdman
 Name typed or printed: L.P. Erdman
 Date: 7-24-93 Reg. No. 2886

Corners	List Corners to be Indexed		
	Section	Twp	Range
$N \frac{1}{8}$	23	95N	14W
$E \frac{1}{8}$	23	95N	14W
$NE \frac{1}{16}$	23	95N	14W



SEAL

Placed in
This Book 9/15/93