

UNITED STATES PUBLIC LAND SURVEY CORNER CERTIFICATE

OF

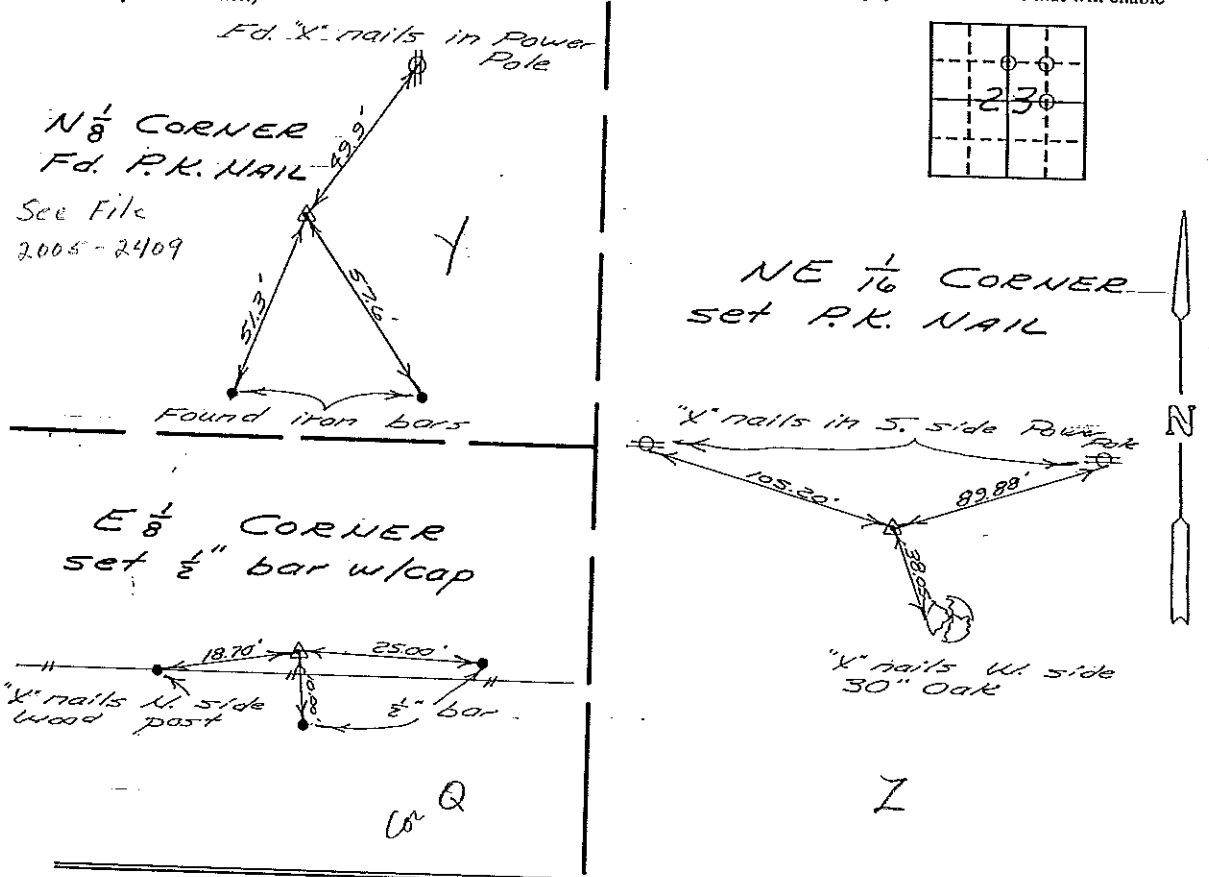
Land Survey Monuments situated in Section 23, Township 95N, Range 14W, of the Fifth Principal Meridian, Chickasaw County, Iowa. Previously recorded in does not apply in County Recorder's Office.

(Show reason for preparing this certificate, the evidence and detailed procedures used in establishing the corner positions and monumentation found or placed.)

Monument Description and Remarks: see below

PLAN - VIEW

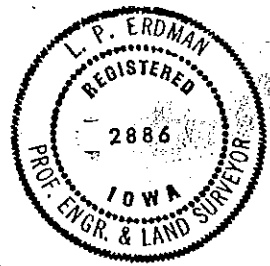
(Show a minimum of three reference ties to durable physical objects, relevant monuments and physical conditions that will enable recovery of the corner.)



I hereby certify that the survey work was completed and this certificate was prepared by me or under my direct personal supervision and that I am a duly registered land surveyor under the laws of the state of Iowa.

Signature: L.P. Erdman  
 Name typed or printed: L.P. Erdman  
 Date: 7-24-93 Reg. No. 2886

Corners	List Corners to be Indexed		
	Section	Twp	Range
N 1/8	23	95N	14W
E 1/8	23	95N	14W
NE 1/6	23	95N	14W



SEAL

Placed in  
 This Book 9/15/93