

Herold - Reicks Surveying, 19 East Main Street, New Hampton, IA 50659, Ph. 641-394-2725, Fax. 641-394-2719

UNITED STATES PUBLIC LAND SURVEY CORNER CERTIFICATE

Land Survey Monuments situated in Section 24, Township 95 North, Range 14 West of the Fifth Principal Meridian, Chickasaw County, Iowa. Not previously recorded in the Chickasaw County Recorder's office.

This certificate is being prepared in compliance with Iowa Code Chapter 355.11 because:



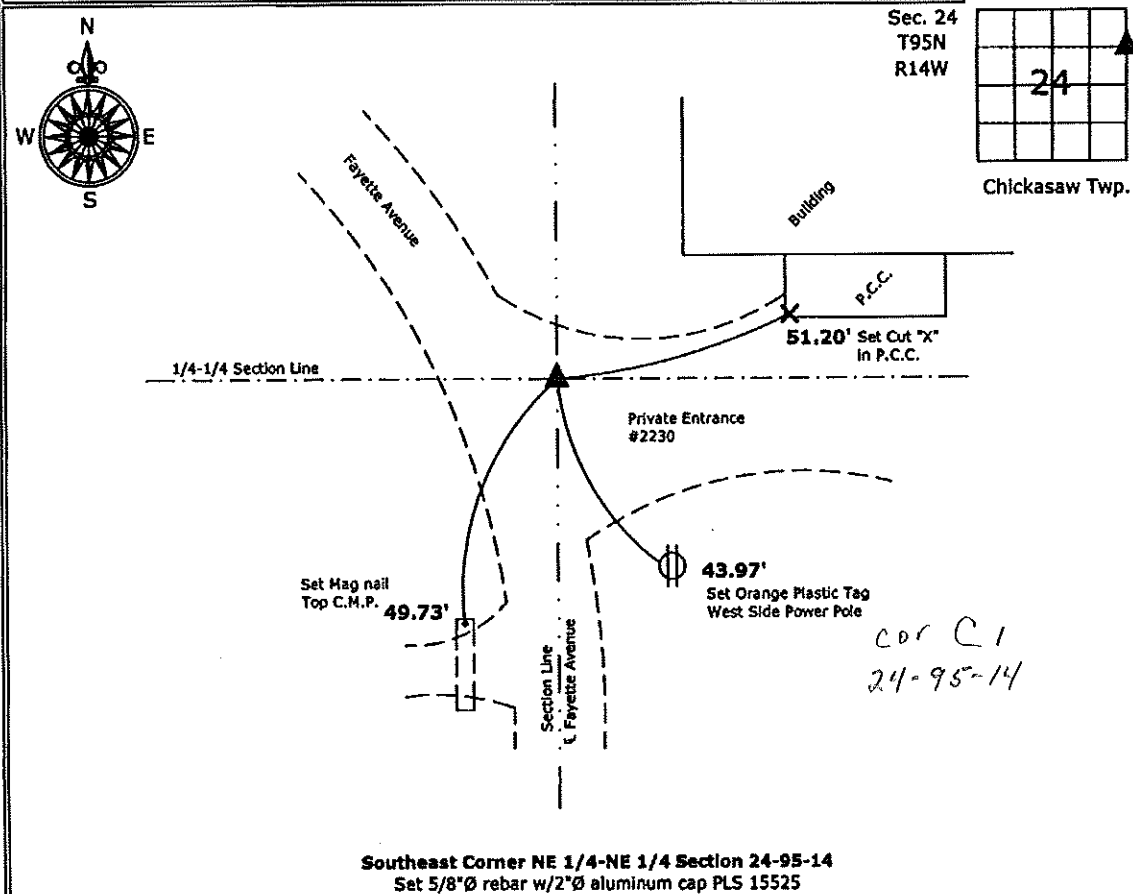
- There is no certificate on file for this corner.
- There are no longer three valid ties of record.
- There are changes to reference ties of record.
- There is change of monumentation of record.
- To clarify description of record monument (ties).

Monument Description and Remarks:

Southeast Corner NE 1/4-NE 1/4: Set 5/8"Ø rebar with 2"Ø aluminum cap PLS 15525 by extending the highway centerline from the Southwest Corner NW 1/4-NE 1/4 easterly to the Section Line between the Northeast Corner and the East 1/4 Corner.

PLAN - VIEW

(Show a minimum of three reference ties to durable physical objects, relevant monuments and physical conditions that will enable recovery of the corner.)



Southeast Corner NE 1/4-NE 1/4 Section 24-95-14
 Set 5/8"Ø rebar w/2"Ø aluminum cap PLS 15525



I hereby certify that this land surveying document was prepared and the related survey work was performed by me or under my direct personal supervision and that I am a duly licensed Land Surveyor under the laws of the State of Iowa.

Paul R. Herold 9-24-10
 Paul R. Herold Date:
 License number 15525
 My license renewal date is December 31, 2010.
 Sheets covered by this seal: Individual sheet only

List Corners to be Indexed			
Corners	Section	Twp.	Range
SE-NE-NE	24	95	14
Project Number: 2010-125			
FB: Ionla 1, Pgs. 4-5			