

Section 13-95-14
 As referred to in
 Engr. Tie Book

2007-1965

Herold - Reicks Surveying, 25 1/2 East Main Street, Suite 204, New Hampton, IA 50659, Ph. 641-394-2725

UNITED STATES PUBLIC LAND SURVEY CORNER CERTIFICATE

Land Survey ¹³ Monuments situated in:
 Section 24, Township 95 North, Range 14 West of the Fifth Principal Meridian,
Chickasaw County, Iowa. Previously recorded in None
 in County Recorder's Office. (book, page, document number, etc.)

(Show reason for preparing this certificate, the evidence and detailed procedures used in establishing the corner positions and monumentation found or placed.)

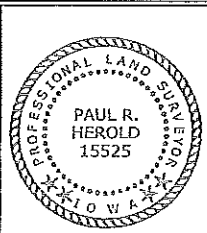
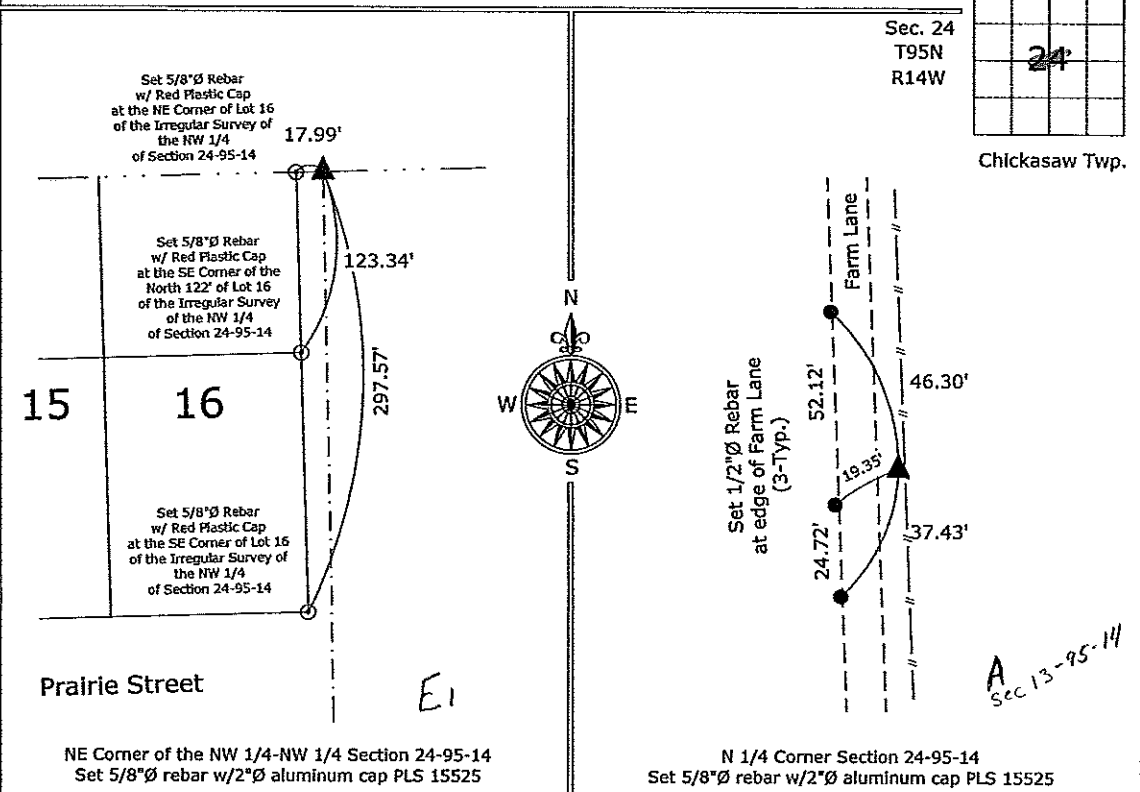
Monument Description and Remarks:

NE Corner of the NW 1/4-NW 1/4 Section 24-95-14, Set 5/8"Ø rebar w/2"Ø aluminum cap PLS 15525, midway and on line between the NW Corner and the N 1/4 Corner.

N 1/4 Corner Section 24-95-14, Set 5/8"Ø rebar w/2"Ø aluminum cap PLS 15525 by intersecting a line from the S 1/4 Corner North through the SE Corner of the NE 1/4-NW 1/4 and a line from the NW Corner East through a position in the possession line fence 1330 feet East of the NW Corner, there are no records in the County Engineer's Office of the perpetuation of a monument at this location.

PLAN - VIEW

(Show a minimum of three reference ties to durable physical objects, relevant monuments and physical conditions that will enable recovery of the corner.)



I hereby certify that this land surveying document was prepared and the related survey work was performed by me or under my direct personal supervision and that I am a duly licensed Land Surveyor under the laws of the State of Iowa.

Paul R. Herold 10-5-07
 Paul R. Herold Date:
 License number 15525
 My license renewal date is December 31, 2008.
 Sheets covered by this seal: Individual sheet only

List Corners to be Indexed			
Corners	Section	Twp.	Range
NE-NW-NW	24	95	14
N 1/4	24	95	14

Project Number: 2007-085
 FB: Ionia 1, Pgs. 1-3