

2007-1963

Herold - Recks Surveying, 25 1/2 East Main Street, Suite 204, New Hampton, IA 50659, Ph. 515-394-2725

UNITED STATES PUBLIC LAND SURVEY CORNER CERTIFICATE

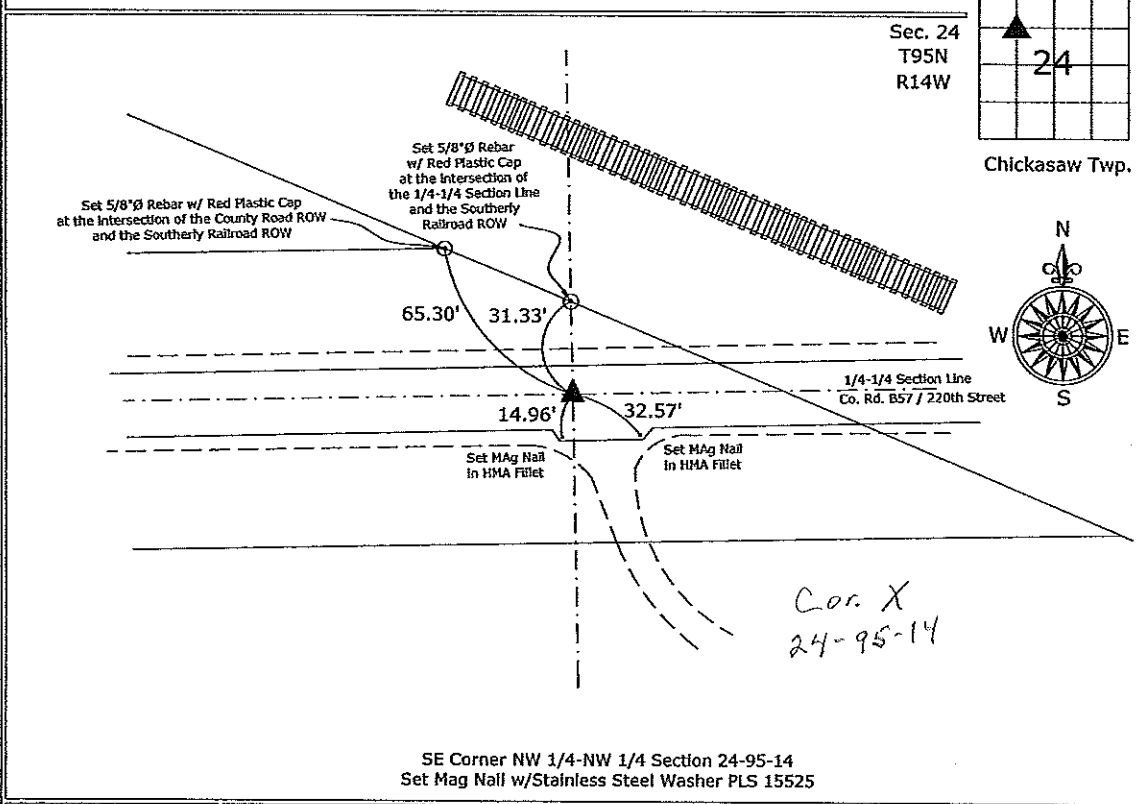
Land Survey Monuments situated in:
 Section 24, Township 95 North, Range 14 West of the Fifth Principal Meridian,
Chickasaw County, Iowa. Previously recorded in None
 in County Recorder's Office. (book, page, document number, etc.)

(Show reason for preparing this certificate, the evidence and detailed procedures used in establishing the corner positions and monumentation found or placed.)
 Monument Description and Remarks:

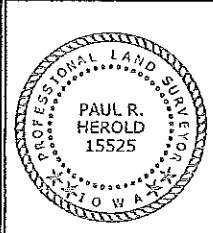
Southeast Corner of the Northwest Quarter of the Northwest Quarter of Section 24-95-14, Set MAG Nail w/ Stainless Steel Washer PLS 15525, at the intersection of the Quarter-Quarter Section Lines.

PLAN - VIEW

(Show a minimum of three reference ties to durable physical objects, relevant monuments and physical conditions that will enable recovery of the corner.)



SE Corner NW 1/4-NW 1/4 Section 24-95-14
 Set Mag Nail w/Stainless Steel Washer PLS 15525



I hereby certify that this land surveying document was prepared and the related survey work was performed by me or under my direct personal supervision and that I am a duly licensed Land Surveyor under the laws of the State of Iowa.
Paul R. Herold 10-5-07
 Paul R. Herold Date:
 License number 15525
 My license renewal date is December 31, 2008.
 Sheets covered by this seal: Individual sheet only

| List Corners to be Indexed | | | |
|----------------------------|---------|------|-------|
| Corners | Section | Twp. | Range |
| SE-NW-NW | 24 | 95 | 14 |
| Project Number: 2007-085 | | | |
| FB: Ionla 1, Pgs. 1-3 | | | |