

FILED 2004-2708
 RECORDER'S OFFICE
 CHICKASAW COUNTY, IOWA
 2004 NOV 30 ^{See 7.00} AM 8 54
 CINDY MESSERSMITH
 COUNTY RECORDER

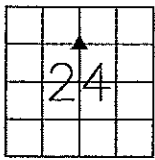
PREPARED BY - S & S LAND SURVEYING, INC., 313 S. CHERRY, SUITE B, PO BOX 266, SHELL ROCK, IOWA 50670 - PHONE 319-885-4244

UNITED STATES PUBLIC LAND SURVEY CORNER CERTIFICATE

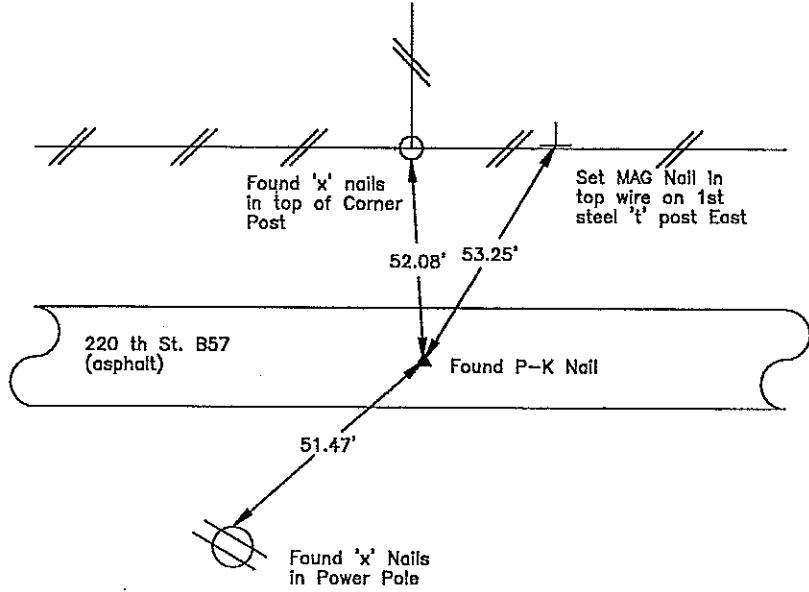
OF

Land Survey Monuments situated in Section 24, Township 95 North, Range 14 West, of the Fifth Principal Meridian, Chickasaw County, Iowa.
 Previously recorded in Book N/A, Page N/A.

Corner was located for a land survey in Block 12, Original town of Ionia. Corner was located using ties obtained from the Chickasaw County Engineer's Office.



PLAN--VIEW
 NO SCALE

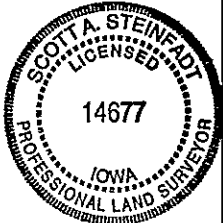


Cor. Y
 24-95-14

I hereby certify that this land surveying document was prepared and the related survey work was performed by me or under my direct personal supervision and that I am a duly Licensed Professional Land Surveyor under the laws of the State of Iowa.
Scott A. Steinfadt
 Scott A. Steinfadt, P.L.S. 11-29-04
 date

List Corners to be Indexed

Corners	Section	Twp	Range
S.E. Corner N.E.1/4, N.W.1/4	24	95 North	14 West



Iowa License No. 14677
 My License Renewal Date: Dec. 31, 2004.
 Pages or sheets covered by this seal:
 This page only.

S & S
 LAND SURVEYING, INC.
 313 S. CHERRY, SUITE 'B'
 PO BOX 266
 SHELL ROCK, IOWA 50670
 (319) 885-4244