

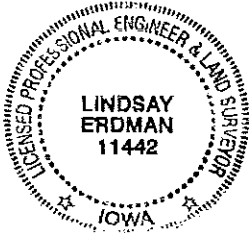
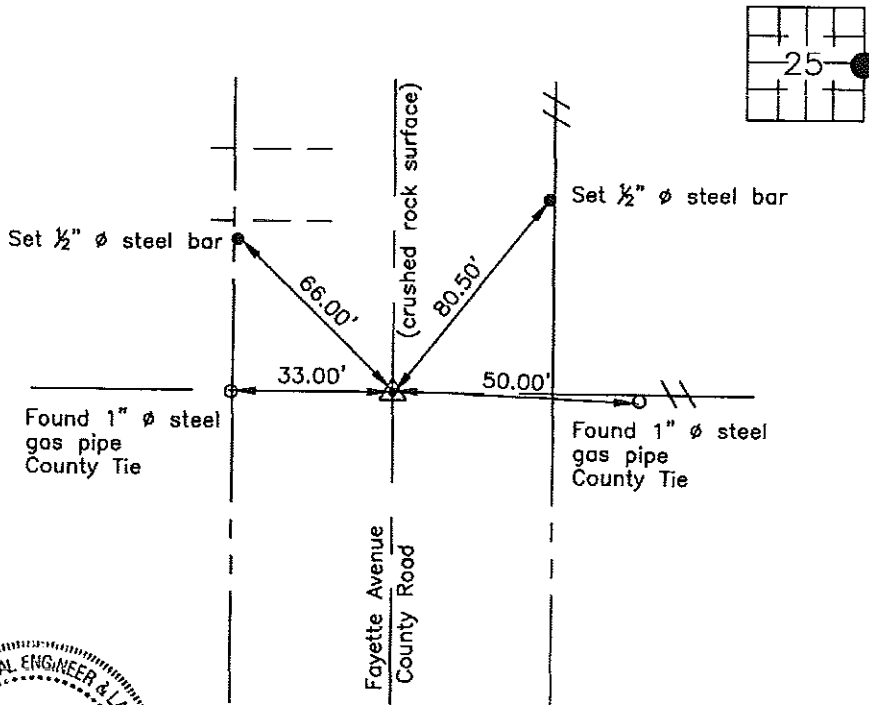
Prepared by: Erdman Engineering, P.C., 708 Commerce Drive, P.O. Box 246, Decorah, Iowa 52101 (563) 382-4194

United States Public Land Survey Corner Certificate
 of

Land Survey Monuments situated in Section 25, Township 95, Range 14 West of the 5th Principal Meridian in Chickasaw County, Iowa. Previously recorded in does not apply in the county Recorder's Office.

Monument Description and Remarks: This certificate is prepared in accordance with Section 193C of the Code of Iowa. No previous certificate has been filed for this corner location. Based on Chickasaw County Engineer's Reference Ties we found 2 1" diameter gas pipes that had been used previously as tie markers. From these ties we made a magnetic locator search of a ±10' diameter area for the gas pipe and brick that had been previously set. We did not find the monument as it appears to have been removed. We set a 3/4" diameter steel bar with 2" aluminum cap #11442 from the ties and in line with the fence line running east as the E 1/4 Corner of Section 25, Township 95 North, Range 14 West.

Plan-View



Cor. C
 25-95-14

I hereby certify that this land surveying document was prepared and the related survey work was performed by me or under my direct personal supervision and that I am a duly licensed Land Surveyor under the laws of the State of Iowa.

Signature: *Lindsay Erdman*
 Lindsay Erdman, P.E. and P.L.S. Iowa License Number 11442

Date: 3/22/07

My license renewal date is December 31, 2008

Corner(s) to be Indexed

Corner	Section	Township	Range
E 1/4	25	95	14