

2007-1964

Herold - Recks Surveying, 25 1/2 East Main Street, Suite 204, New Hampton, IA 50659, Ph. 641-394-2725

UNITED STATES PUBLIC LAND SURVEY CORNER CERTIFICATE

Land Survey Monuments situated in:
 Section 24, Township 95 North, Range 14 West of the Fifth Principal Meridian,
Chickasaw County, Iowa. Previously recorded in None
(book, page, document number, etc.)
 in County Recorder's Office.

(Show reason for preparing this certificate, the evidence and detailed procedures used in establishing the corner positions and monumentation found or placed.)

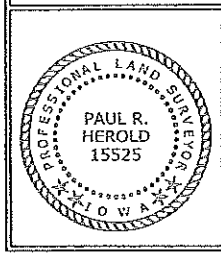
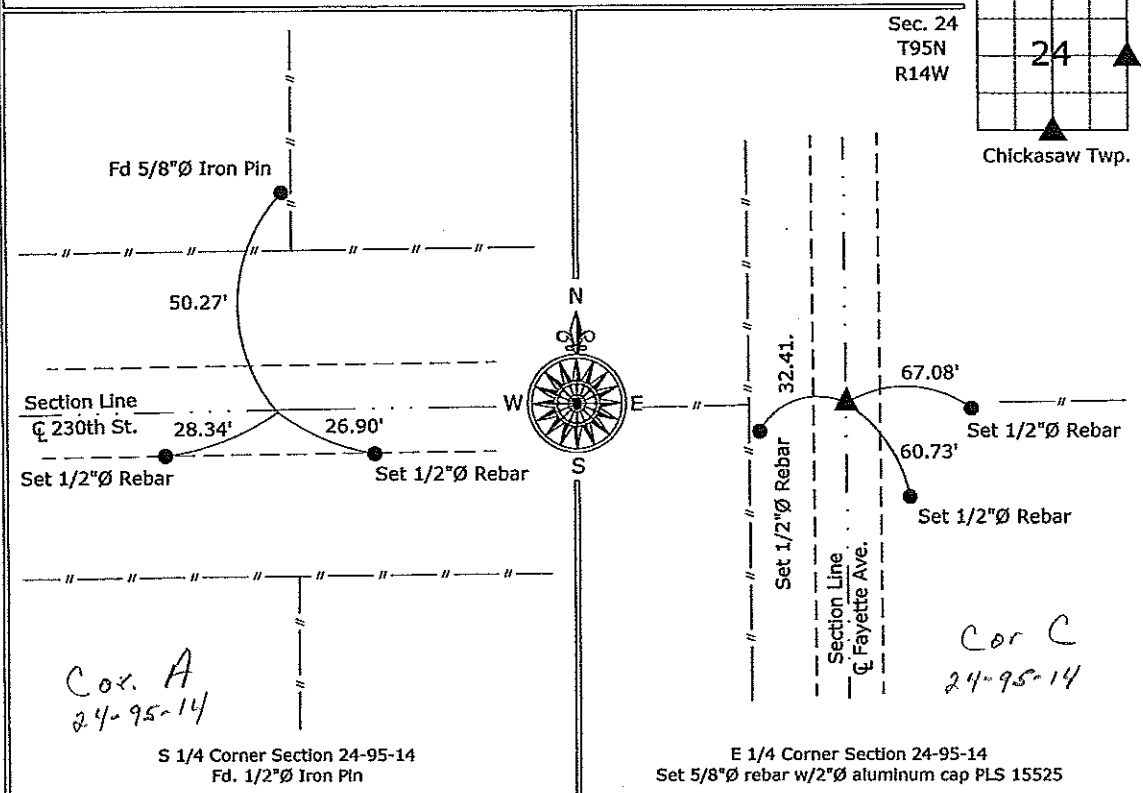
Monument Description and Remarks:

S 1/4 Corner Section 24-95-14, Fd. 1/2"Ø Iron Pin from information obtained from the County Engineer's Office in Field Book, Chickasaw Twp., Section 24, Corner "A". Found 1 remaining tie.

E 1/4 Corner Section 24-95-14, Set 5/8"Ø rebar w/2"Ø aluminum cap PLS 15525 in the center of the Road in line with the fences East-West, the County Engineer's notes stated that in 1927 there was a stone and iron pin, however it also states that in 1961 they dug a 8' x 3' x 3' hole and did not find any monument, searched with a metal locator in the immediate area, no readings, further excavation pointless.

PLAN - VIEW

(Show a minimum of three reference ties to durable physical objects, relevant monuments and physical conditions that will enable recovery of the corner.)



I hereby certify that this land surveying document was prepared and the related survey work was performed by me or under my direct personal supervision and that I am a duly licensed Land Surveyor under the laws of the State of Iowa.

Paul R. Herold 10-5-07
 Paul R. Herold Date:
 License number 15525
 My license renewal date is December 31, 2008.
 Sheets covered by this seal: Individual sheet only

List Corners to be Indexed			
Corners	Section	Twp.	Range
S 1/4	24	95	14
E 1/4	24	95	14

Project Number: 2007-085
 FB: Ionia 1, Pgs. 1-3