

Chickasaw Co. Recorder
 Cindy Messersmith
Fee Book 2007-0571
 03/26/2007 @0840AM
 SCC: SEC COR CERT
 Book: Page: # Pages: 1
 Total Fees: \$7.00

Section 23-95-14
 As referred to in
 Engr. Tie Book

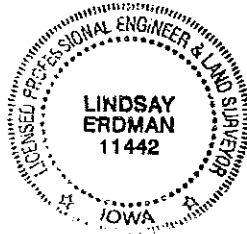
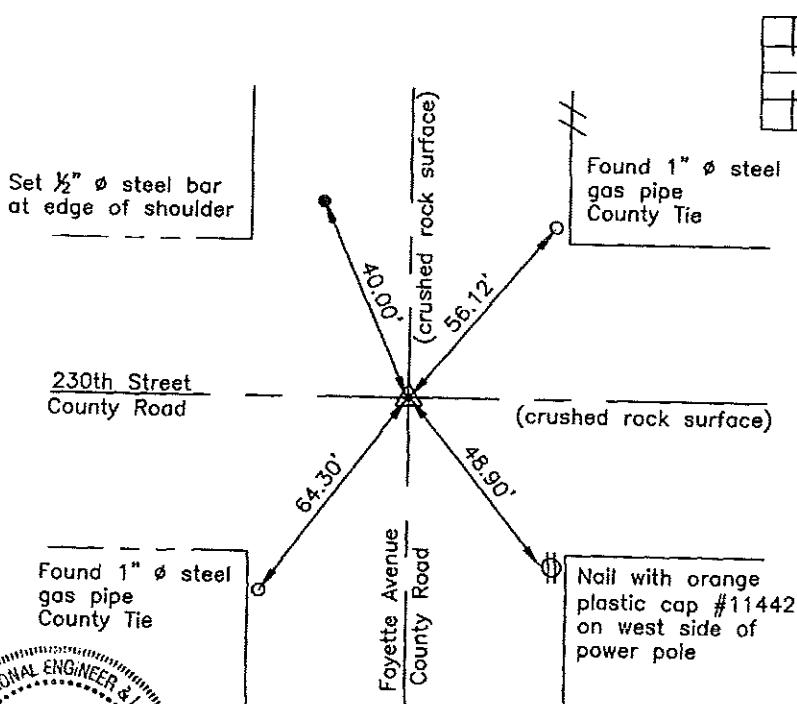
Prepared by: Erdman Engineering, P.C., 708 Commerce Drive, P.O. Box 246, Decorah, Iowa 52101 (563) 382-4194

United States Public Land Survey Corner Certificate
 of 23

Land Survey Monuments situated in Section 25, Township 95, Range 14 West of the 5th Principal Meridian in Chickasaw County, Iowa. Previously recorded in does not apply in the county Recorder's Office.

Monument Description and Remarks: This certificate is prepared in accordance with Section 193C of the Code of Iowa. No previous certificate has been filed for this corner location. Chickasaw County Engineer's Reference Ties show that an iron pin and stone were found in 1929 and in 1962 at the NE Corner. Based on Chickasaw County Engineer's Reference Ties we found 2 1" diameter gas pipes that had been used previously as tie markers. From these ties we we found a 3/8" diameter steel bar at the approximate centerline-centerline intersection of the county roads. We used the steel bar as the NE Corner of Section 25, Township 95 North, Range 14 West.

Plan-View



Cor B
 23-95-14

I hereby certify that this land surveying document was prepared and the related survey work was performed by me or under my direct personal supervision and that I am a duly licensed Land Surveyor under the laws of the State of Iowa.

Signature: *Lindsay Erdman*
 Lindsay Erdman, P.E. and P.L.S. Iowa License Number 11442

Date: 3/22/07

My license renewal date is December 31, 2008

Corner(s) to be Indexed

Corner	Section	Township	Range
NE	25	95	14