

Chickasaw Co. Recorder
 Cindy Messersmith
Fee Book 2009-0252
 02/03/2009 @10:34AM
 SCC SEC COR CERT
 Book: Page: # Pages: 1
 Total Fees: \$7.00

Section 26-95-14
 As referred to in
 Eng. Tie Book

Herold - Reicks Surveying, 25 1/2 East Main Street, Suite 284, New Hampton, IA 50659, Ph. 641-384-2725

UNITED STATES PUBLIC LAND SURVEY CORNER CERTIFICATE

Land Survey Monuments situated in Section 25, Township 95 North, Range 14 West of the Fifth Principal Meridian, Chickasaw County, Iowa. 1.) Previously recorded in Bk.151 Pg.193 in the County Recorders office. 2.) Not previously recorded in the County Recorder's office.

This certificate is being prepared in compliance with Iowa Code Chapter 355.11 because:

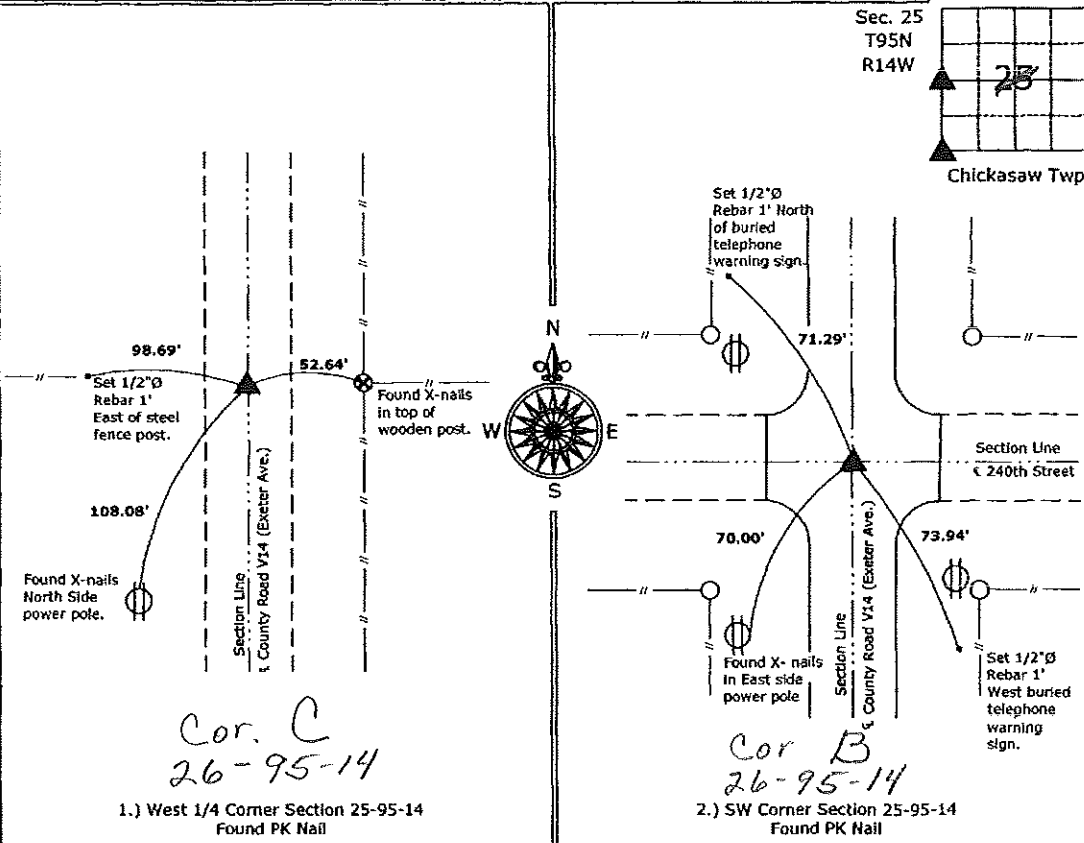
- 2.) There is no certificate on file for this corner.
- 1.) There are no longer three valid ties of record.
- There are changes to reference ties of record.
- There is change of monumentation of record.
- To clarify description of record monument (ties).

Monument Description and Remarks:

- 1.) **West 1/4 Corner:** Found PK Nail in the Centerline of County Road V14 (Exeter Ave.) from information obtained from previous corner certificate.
- 2.) **SW Corner:** Found PK Nail in the Centerline of County Road V14 (Exeter Ave.) from information obtained from the County Engineer's office in field book "Chickasaw Twp., Section Ties", Section 26, Corner "B".

PLAN - VIEW

(Show a minimum of three reference ties to durable physical objects, relevant monuments and physical conditions that will enable recovery of the corner.)



Cor. C
 26-95-14
 1.) West 1/4 Corner Section 25-95-14
 Found PK Nail

Cor. B
 26-95-14
 2.) SW Corner Section 25-95-14
 Found PK Nail

File: S:\Projects\2009\2009-011.dwg, 2/3/2009 9:47:38 AM



I hereby certify that this land surveying document was prepared and the related survey work was performed by me or under my direct personal supervision and that I am a duly licensed Land Surveyor under the laws of the State of Iowa.
Kirk D. Reicks 2-3-09
 Kirk D. Reicks Date:
 License number 19211
 My license renewal date is December 31, 2010.
 Sheets covered by this seal: Individual sheet only

List Corners to be Indexed			
Corners	Section	Twp.	Range
W 1/4	25	95	14
SW	25	95	14

Project Number: 2009-011
 FB: Chickasaw County 3, Pgs. 22-23

UNITED STATES PUBLIC LAND SURVEY CORNER CERTIFICATE

and Survey Monuments situated in Section 26, Township 95 N, Range 14 W, of the Fifth Principal Meridian, Chickasaw County, Iowa, previously recorded in NA in County Recorder's Office.

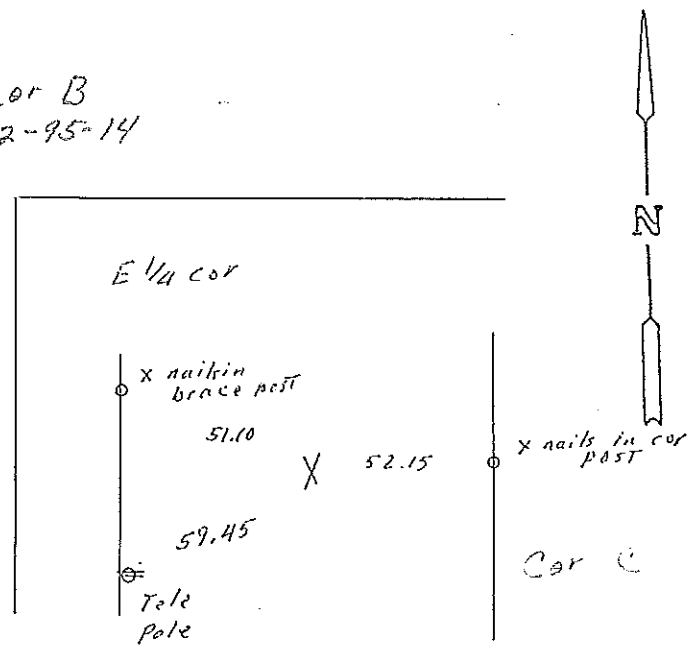
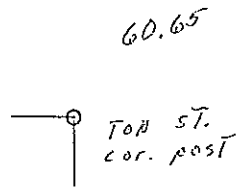
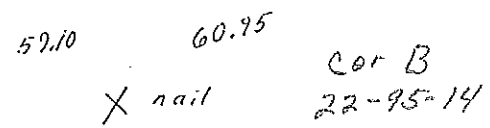
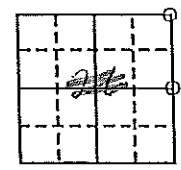
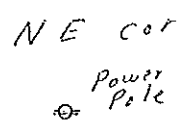
(book, page, document number, etc.)
 Show reason for preparing this certificate, the evidence and detailed procedures used in establishing the corner positions and monumentation found or placed.)

Monument Description and Remarks: Found nail in both NE cor and E 1/4 cor

PLAN - VIEW

(Show a minimum of three reference ties to durable physical objects, relevant monuments and physical conditions that will enable recovery of the corner.)

*Section 22-95-14
 As referred to in
 Engr. Tie Book*

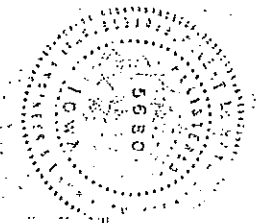


I hereby certify that the survey work was completed and this certificate was prepared by me or under my direct personal supervision and that I am a duly registered land surveyor under the laws of the state of Iowa.

Signature: R. L. Haylock
 Name typed or printed: Robert L. Haylock
 Date: 2-24-93 Reg. No. 5680

Corners	List Corners to be Indexed Section	Twp	Range
NE	26	95 N	14 W
E 1/4	26	95 N	14 W

SEAL



DOCUMENT No. 01716 FILED FOR RECORD THE 25th DAY OF February, 1993 AT 8:30 Leitha N. Ross Recorder
 RECORDING FEE \$ 5.00 O'CLOCK A M. BOOK 151 PAGE 193 By Leitha N. Ross Deputy