

Herold - Reicks Surveying, 25 1/2 East Main Street, Suite 204, New Hampton, IA 50659, Ph. 641-394-2725

23-95-14  
 As ref. to in  
 Eng. Tie Book

**UNITED STATES PUBLIC LAND SURVEY CORNER CERTIFICATE**

Land Survey Monuments situated in Section 26, Township 95 North, Range 14 West of the Fifth Principal Meridian, Chickasaw County, Iowa. Previously recorded in 1.) Bk. 164 Deeds, Pg. 432, 2.) Bk. 164 Deeds, Pg. 431 in the Chickasaw County Recorder's office.

This certificate is being prepared in compliance with Iowa Code Chapter 355.11 because:

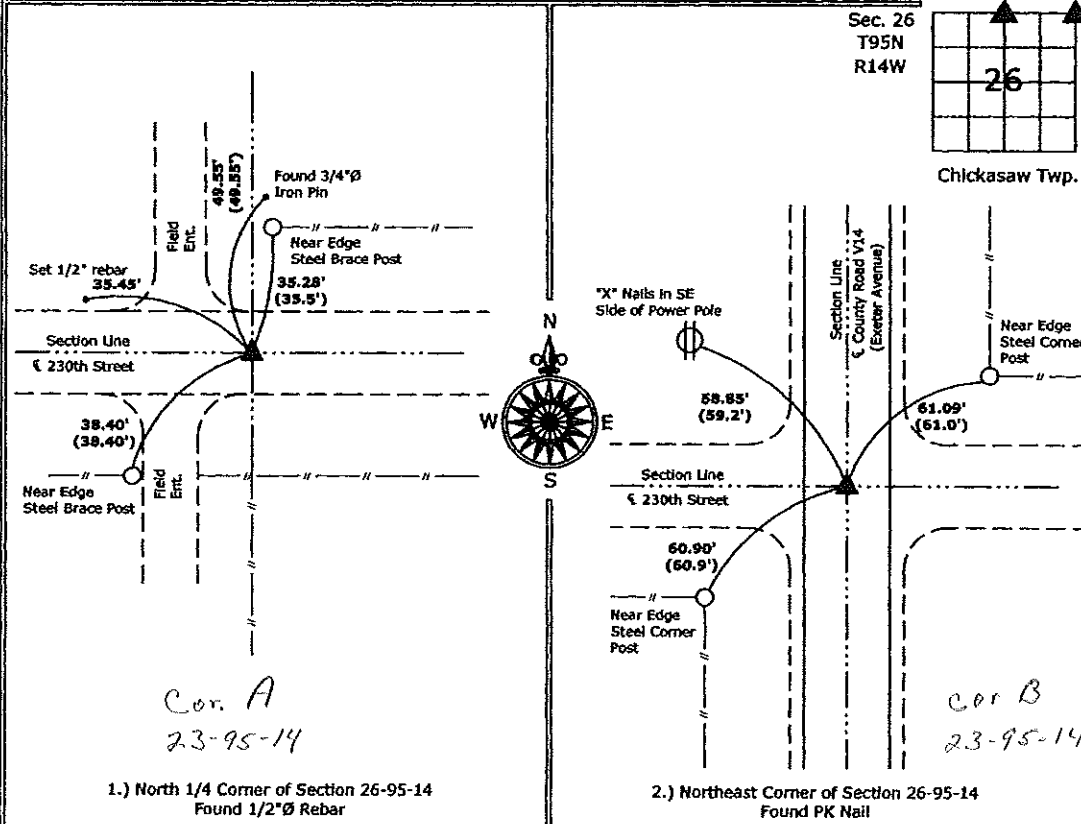
- There is no certificate on file for this corner.
- There are no longer three valid ties of record.
- There are changes to reference ties of record.
- There is change of monumentation of record.
- To clarify description of record monument (ties).

**Monument Description and Remarks:**

- 1.) **North 1/4 Corner:** Found 1/2" Ø Rebar from information obtained from previous section corner certificate.
- 2.) **Northeast Corner:** Found PK Nail from information obtained from previous section corner certificate.

**PLAN - VIEW**

(Show a minimum of three reference ties to durable physical objects, relevant monuments and physical conditions that will enable recovery of the corner.)



I hereby certify that this land surveying document was prepared and the related survey work was performed by me or under my direct personal supervision and that I am a duly licensed Land Surveyor under the laws of the State of Iowa.  
*Kirk D. Reicks* 8-10-09  
 Kirk D. Reicks Date:  
 License number 19211  
 My license renewal date is December 31, 2010  
 Sheets covered by this seal: Individual sheet only

List Corners to be Indexed			
Corners	Section	Twp.	Range
N1/4	26	95	14
NE	26	95	14

Project Number: 2009-090  
 FB: Chickasaw County 3, Pg. 40

File: S:\\_Projects\2009-090\dwg\2009-090.dwg, 8/7/2009 5:29:23 PM

Section 22-95-14  
 As referred to in  
 Engr. Tie Book

PREPARED BY/RETURN TO: KENNETH D. STARK STARK SURVEYING 1622 So. Tell Ave. MASON CITY, IOWA 50401 641-423-7947

UNITED STATES PUBLIC LAND SURVEY CORNER CERTIFICATE OF

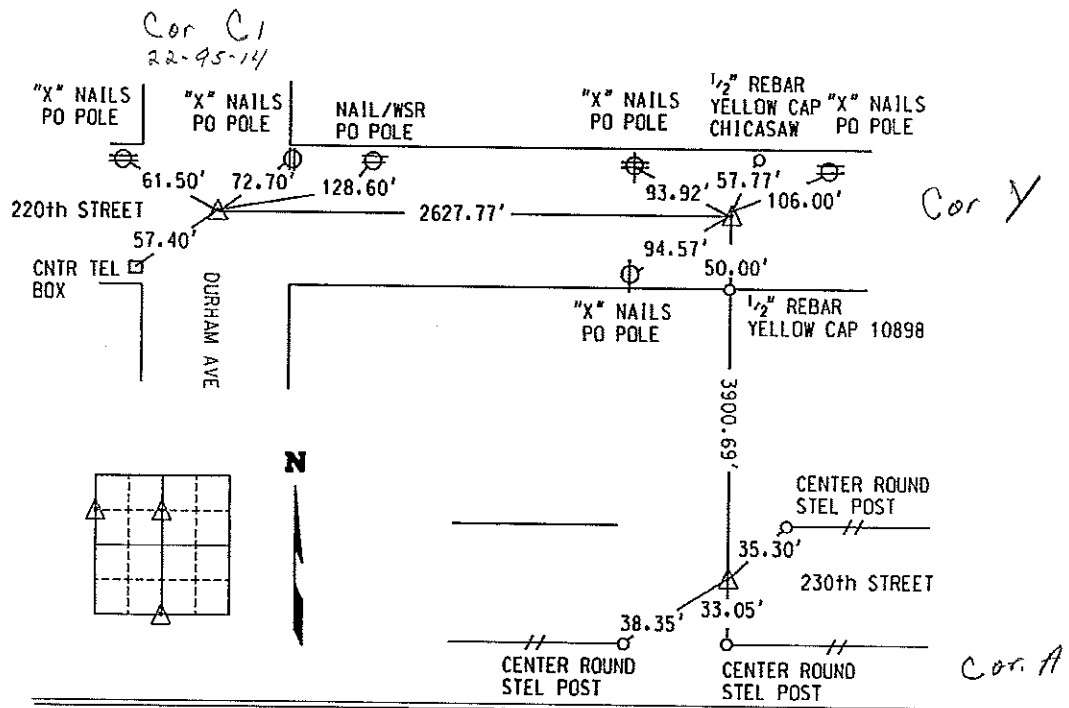
Land Survey Monuments situated in Section 22, Township 95N, Range 14W  
 of the Fifth Principal Meridian, CHICKASAW County, Iowa.

Previously recorded in NA in County Recorder's Office.  
(book, page, document number, etc.)

(Show reason for preparing this certificate, the evidence and detailed procedures used in establishing the corner positions and monumentation found or placed.)

Monument Description and Remarks:

NW COR SW<sup>1</sup>/<sub>4</sub> NW<sup>1</sup>/<sub>4</sub> = FOUND P-K NAIL FLUSH PER COUNTY RECORDS  
 NE COR SE<sup>1</sup>/<sub>4</sub> NW<sup>1</sup>/<sub>4</sub> = FOUND P-K NAIL FLUSH PER COUNTY RECORDS  
 S<sup>1</sup>/<sub>4</sub> COR = FOUND 1/2" IRON PIN 0.3' DEEP PER COUNTY RECORDS



**LICENSED LAND SURVEYOR**  
 KENNETH D. STARK  
 10898  
 IOWA

I hereby certify that this land surveying document was prepared and the related survey work was performed by me or under my personal supervision and that I am a duly licensed Land Surveyor under the laws of the state of Iowa.  
 Kenneth D. Stark Date 10-31-05  
 License number 10898  
 My License renewal date is December 31, 2005  
 Pages or sheets covered by this cert. 1

List Corners to be Indexed			
Corner	Section	Township	Range
NW COR SW <sup>1</sup> / <sub>4</sub> NW <sup>1</sup> / <sub>4</sub>	23	95	14
NE COR SE <sup>1</sup> / <sub>4</sub> NW <sup>1</sup> / <sub>4</sub>	23	95	14
S <sup>1</sup> / <sub>4</sub> COR	23	95	14

UNITED STATES PUBLIC LAND SURVEY CORNER CERTIFICATE

OF

Land Survey Monuments situated in Section 23, Township 95 North, Range 14 West of the Fifth Principal Meridian, CHICKASAW County, Iowa. Previously recorded in none in County Recorder's Office. (book, page, document number, etc.)

(Show reason for preparing this certificate, the evidence and detailed procedures used in establishing the corner positions and monumentation found or placed.)

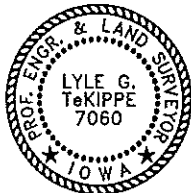
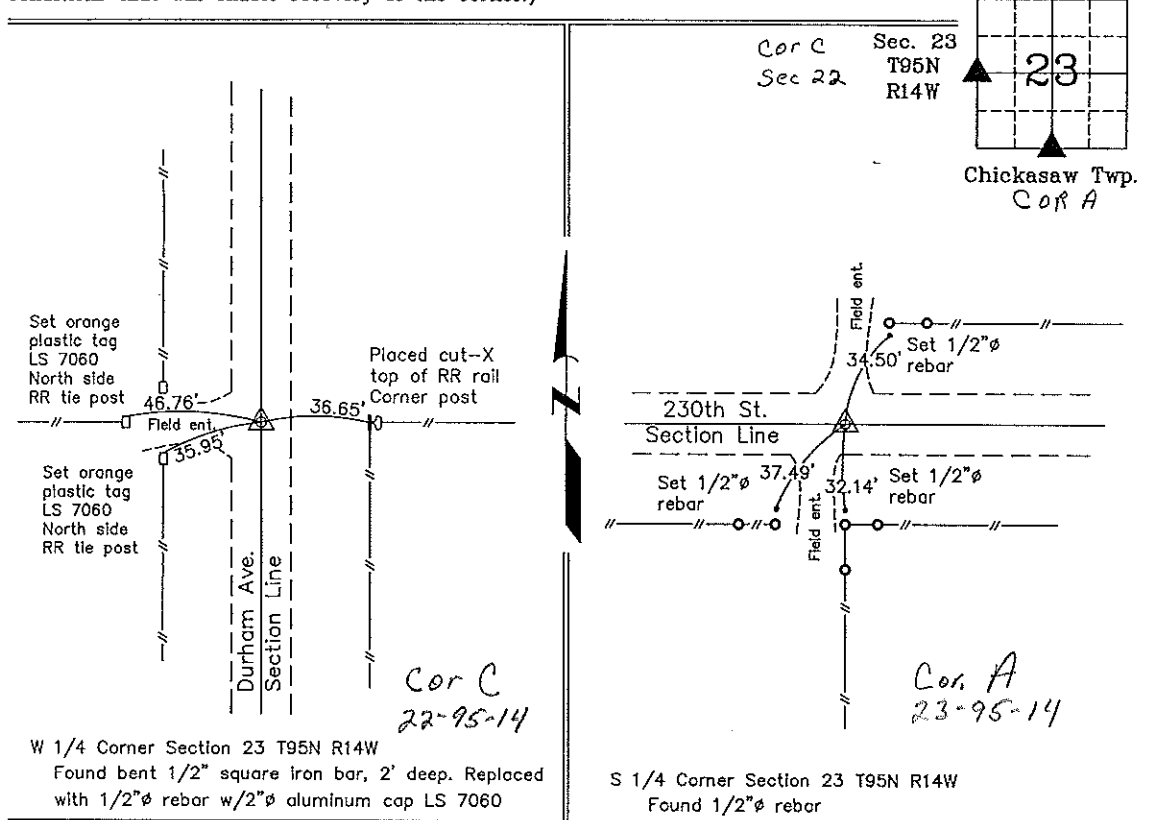
Monument Description and Remarks: **W 1/4 Corner Section 23 T95N R14W:** Found bent 1/2" square iron bar, 2' deep, on the extension of a quarter section line fence to the centerline of Durham Ave. Replaced iron bar with 1/2"Ø rebar w/2"Ø aluminum cap LS 7060.

**S 1/4 Corner Section 23 T95N R14W:** Found 1/2"Ø rebar with information obtained from the Chickasaw County Engineer's Office in the Field Book for Chickasaw Twp. Corner Ties, Corner 'A', Section 23.

PLAN - VIEW

Project Number 00125.18  
FB 48G PG. 70-74

(Show a minimum of three reference ties to durable physical objects, relevant monuments and physical conditions that will enable recovery of the corner.)



I hereby certify that this land surveying document was prepared and the related survey work was performed by me or under my direct personal supervision and that I am a duly licensed Land Surveyor under the laws of the State of Iowa.

*Lyle G. TeKippe* 7-25-00  
Lyle G. TeKippe Date  
License number 7060  
My license renewal date is December 31, 2000.  
Sheets covered by this seal: Individual

List Corners to be Indexed			
Corners	Section	Twp.	Range
W 1/4	23	95N	14W
S 1/4	23	95N	14W

Filed 7-27-00

DOCUMENT No. **00172** FILED FOR RECORD THE **24th** DAY OF **JULY** 19**97** AT **3:13** P.M. BOOK **164** PAGE **432**  
 RECORDING FEE \$ **6.00** BY **Leitha Ross** Recorder  
 TRANSFER FEE \$ ..... DEPUTY BY **Shirley K. Bullington**  
 SLSI 9-90

Kirk D. Eschliman, P.L.S. Iowa Lic. No. 9961, 723 Broadway Street, Waterloo, Iowa 50703 - Phone: 319-234-0509

## UNITED STATES PUBLIC LAND SURVEY CORNER CERTIFICATE OF

Land Survey Monuments situated in Section 23, Township 95 NORTH, Range 14 WEST, of the Fifth Principal Meridian, CHICKASAW County, Iowa.  
 Previously recorded in NOT PREVIOUSLY RECORDED of the County Recorder's Office.  
 (book, page, document number, etc.)

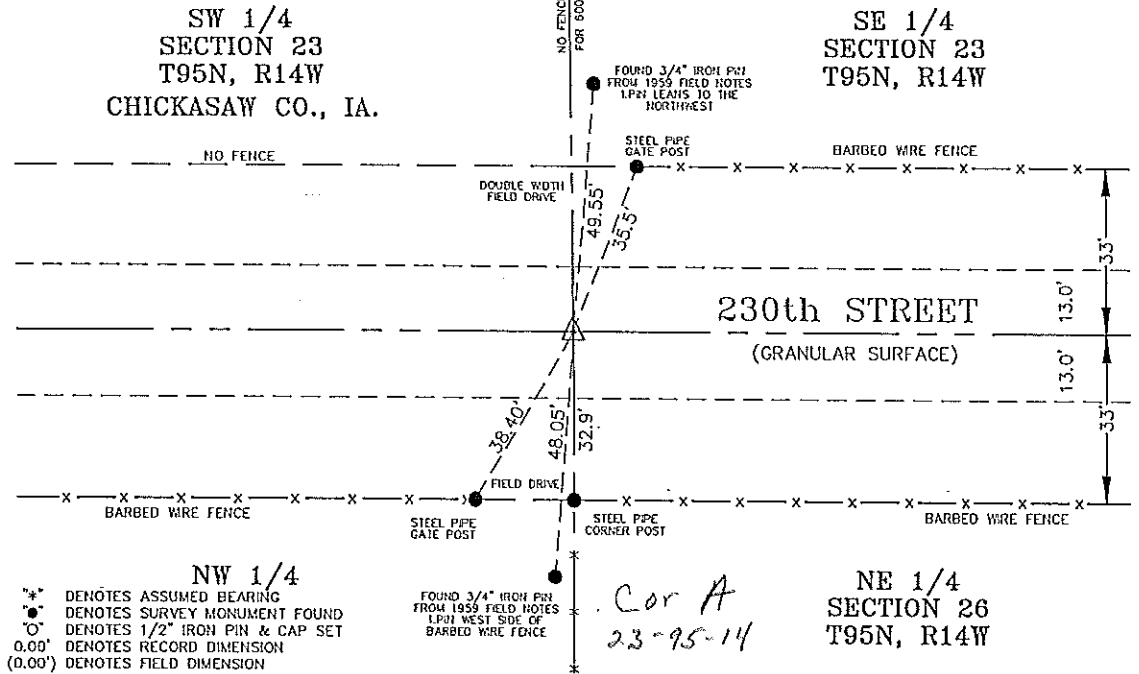
(Show reason for preparing this certificate, the evidence and detailed procedures used in establishing the corner positions and monumentation found or placed.)

**Monument Description and Remarks:** FROM FIELD BOOK NOTES IN THE COUNTY ENGINEER'S OFFICE FOR SAID SECTION, INDICATED IRON PIN OVER STONE CORNER IN 1959; DUG 30"x30" HOLE 3+FT. DEEP. DID NOT FIND IRON PIN OR SAID STONE MONUMENT; RE-ESTABLISHED WITH 1/2" IRON PIN AND I.D. CAP NO. 9961, AFTER REVIEW OF EVIDENCE WITH COUNTY ENGINEER.

**NOTE:** DEPTH OF HOLE (3+FT.) WAS 10" BELOW THE ORIGINAL ROAD SURFACE, AS EVIDENCED BY VEGETATION FOUND.

### PLAN - VIEW

(Show a minimum of three reference ties to durable physical objects, relevant monuments and physical conditions that will enable recovery of the corner.)



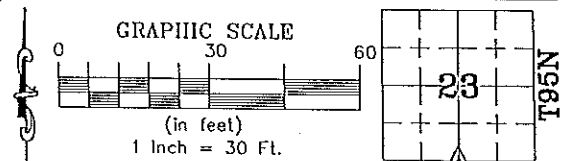
I HEREBY CERTIFY THAT THIS LAND SURVEYING DOCUMENT WAS PREPARED BY ME OR UNDER MY DIRECT PERSONAL SUPERVISION AND THAT I AM A DULY LICENSED LAND SURVEYOR UNDER THE LAWS OF THE STATE OF IOWA.

Signature: *Kirk D. Eschliman*  
 DATE: 04/14/97  
 KIRK D. ESCHLIMAN, P.L.S. IOWA LIC. NO. 9961  
 MY LICENSE RENEWAL DATE IS DECEMBER 31, 1997

SEAL:



BOOK 164 PAGE 432



#### LIST OF CORNERS TO BE INDEXED

Corners	Section	Township	Range
S 1/4	23	95	14

**HEINICK ENGINEERING GROUP, INC.**  
 CIVIL ENGINEERS & LAND SURVEYORS WITH OFFICES IN WATERLOO & CEDAR FALLS, IOWA  
 DRAWN BY: K.D.E. REF.: BK.: PG.:  
 DATE: 04/14/97 C.A.D.D. FILE: 97A23C23.DWG PROJECT NO.: 97A23