

Herold - Reicks Surveying, 25 1/2 East Main Street, Suite 204, New Hampton, IA 50659, Ph. 641-394-2725

UNITED STATES PUBLIC LAND SURVEY CORNER CERTIFICATE

Land Survey Monuments situated in Section 26, Township 95 North, Range 14 West of the Fifth Principal Meridian, Chickasaw County, Iowa. Previously recorded in 1.) Bk. 164 Deeds, Pg. 432, 2.) Bk. 164 Deeds, Pg. 431 in the Chickasaw County Recorder's office.

23-95-14
 As ref. to in
 Eng. Tie Book

This certificate is being prepared in compliance with Iowa Code Chapter 355.11 because:

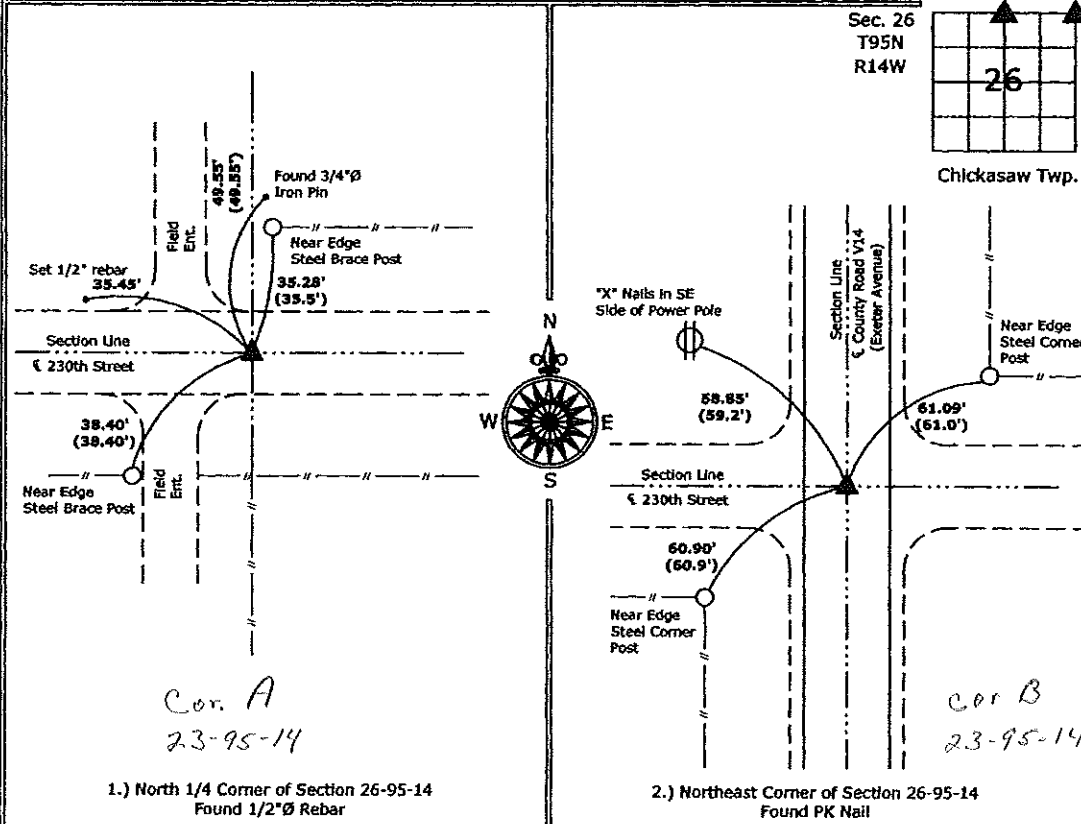
- There is no certificate on file for this corner.
- There are no longer three valid ties of record.
- There are changes to reference ties of record.
- There is change of monumentation of record.
- To clarify description of record monument (ties).

Monument Description and Remarks:

- 1.) North 1/4 Corner: Found 1/2" Ø Rebar from information obtained from previous section corner certificate.
- 2.) Northeast Corner: Found PK Nail from information obtained from previous section corner certificate.

PLAN - VIEW

(Show a minimum of three reference ties to durable physical objects, relevant monuments and physical conditions that will enable recovery of the corner.)



I hereby certify that this land surveying document was prepared and the related survey work was performed by me or under my direct personal supervision and that I am a duly licensed Land Surveyor under the laws of the State of Iowa.
Kirk D. Reicks 8-10-09
 Kirk D. Reicks Date:
 License number 19211
 My license renewal date is December 31, 2010
 Sheets covered by this seal: Individual sheet only

List Corners to be Indexed			
Corners	Section	Twp.	Range
N1/4	26	95	14
NE	26	95	14

Project Number: 2009-090
 FB: Chickasaw County 3, Pg. 40

File: S:_Projects\2009-090\dwg\2009-090.dwg, 8/17/2009 5:29:23 PM

Chickasaw Co. Recorder
 Cindy Messersmith
Fee Book 2007-0571
 03/26/2007 @0840AM
 SCC SEC COR CERT
 Book: Page: # Pages: 1
 Total Fees: \$7.00

Section 23-95-14
 As referred to in
 Engr. Tie Book

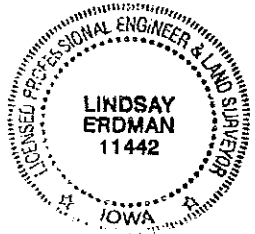
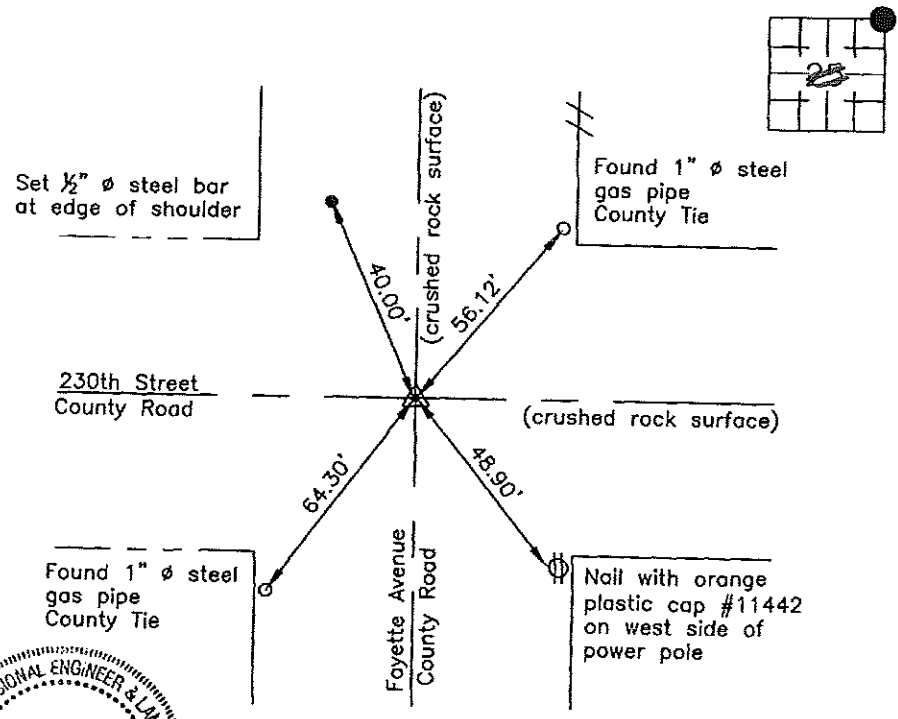
Prepared by: Erdman Engineering, P.C., 708 Commerce Drive, P.O. Box 246, Decorah, Iowa 52101 (563) 382-4194

United States Public Land Survey Corner Certificate
 of 23

Land Survey Monuments situated in Section 25, Township 95, Range 14 West of the 5th Principal Meridian in Chickasaw County, Iowa. Previously recorded in does not apply in the county Recorder's Office.

Monument Description and Remarks: This certificate is prepared in accordance with Section 193C of the Code of Iowa. No previous certificate has been filed for this corner location. Chickasaw County Engineer's Reference Ties show that an iron pin and stone were found in 1929 and in 1962 at the NE Corner. Based on Chickasaw County Engineer's Reference Ties we found 2 1" diameter gas pipes that had been used previously as tie markers. From these ties we we found a 3/8" diameter steel bar at the approximate centerline-centerline intersection of the county roads. We used the steel bar as the NE Corner of Section 25, Township 95 North, Range 14 West.

Plan-View



Cor B
 23-95-14

I hereby certify that this land surveying document was prepared and the related survey work was performed by me or under my direct personal supervision and that I am a duly licensed Land Surveyor under the laws of the State of Iowa.

Signature: Lindsay Erdman
 Lindsay Erdman, P.E. and P.L.S. Iowa License Number 11442
 Date: 3/22/07

My license renewal date is December 31, 2008

Corner(s) to be Indexed

Corner	Section	Township	Range
NE	25	95	14

XY
 C
 S
 DOCUMENT NO. 00171 FILED FOR RECORD THE 24th DAY OF CHICKASAW COUNTY STATE OF IOWA
 RECORDING FEE \$ 6.00 July, 1997 AT 3:13 P.M. BOOK 164 Deeds PAGE 431
 TRANSFER FEE \$ _____
Keith N. Rose Recorder
David R. Gallagher Deputy
 SLSI 9-90

Kirk D. Eschliman, P.L.S. Iowa Lic. No. 9961, 723 Broadway Street, Waterloo, Iowa 50703 - Phone: 319-234-0509

UNITED STATES PUBLIC LAND SURVEY CORNER CERTIFICATE OF

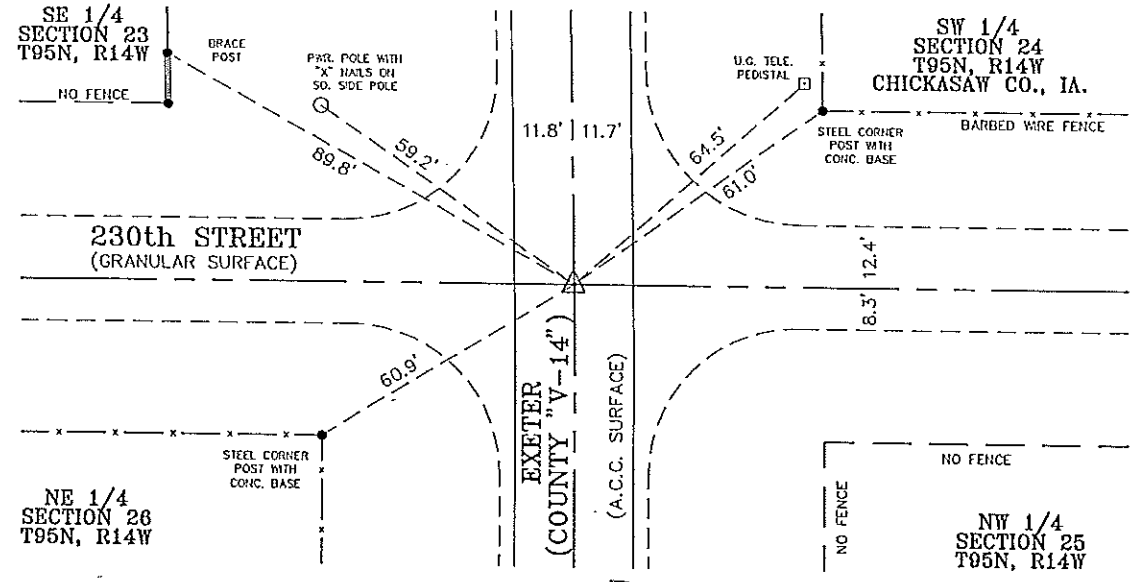
Land Survey Monuments situated in Section 23, Township 95 NORTH, Range 14 WEST, of the Fifth Principal Meridian, CHICKASAW County, Iowa.
 Previously recorded in BK. 151 DEED, PG. 193 of the County Recorder's Office.
 (book, page, document number, etc.)

(Show reason for preparing this certificate, the evidence and detailed procedures used in establishing the corner positions and monumentation found or placed.)

Monument Description and Remarks: FOUND "PK" NAIL, BENEATH SEAL COAT SURFACE, IN A.C.C. PAVEMENT, AS PREVIOUSLY RECORDED.

PLAN - VIEW

(Show a minimum of three reference ties to durable physical objects, relevant monuments and physical conditions that will enable recovery of the corner.)

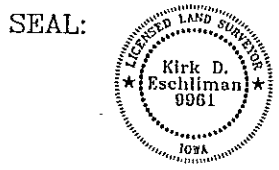


* DENOTES ASSUMED BEARING
 • DENOTES SURVEY MONUMENT FOUND
 ○ DENOTES 1/2" IRON PIN & CAP SET
 0.00' DENOTES RECORD DIMENSION
 (0.00') DENOTES FIELD DIMENSION

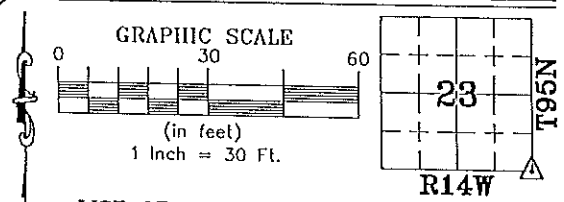
Cor B
 23-95-14

I HEREBY CERTIFY THAT THIS LAND SURVEYING DOCUMENT WAS PREPARED BY ME OR UNDER MY DIRECT PERSONAL SUPERVISION AND THAT I AM A DULY LICENSED LAND SURVEYOR UNDER THE LAWS OF THE STATE OF IOWA.

Kirk D. Eschliman
 KIRK D. ESCHLIMAN, P.L.S. DATE: 04/14/97
 IOWA LIC. NO. 9961
 MY LICENSE RENEWAL DATE IS DECEMBER 31, 1997



164
 BOOK PAGE 431



LIST OF CORNERS TO BE INDEXED

Corners	Section	Township	Range
SE	23	95	14

HEINICK ENGINEERING GROUP, INC.
 CIVIL ENGINEERS & LAND SURVEYORS WITH OFFICES IN WATERLOO & CEDAR FALLS, IOWA
 DRAWN BY: K.D.E. REF.: _____
 DATE: 04/14/97 C.A.O.D. FILE: 97A23C21.0WG BK.: _____ PG.: _____
 PROJECT NO.: 97A23

UNITED STATES PUBLIC LAND SURVEY CORNER CERTIFICATE

and Survey Monuments situated in Section 26, Township 95 N, Range 14 W, of the Fifth Principal Meridian, Chickasaw County, Iowa, previously recorded in NA in County Recorder's Office.

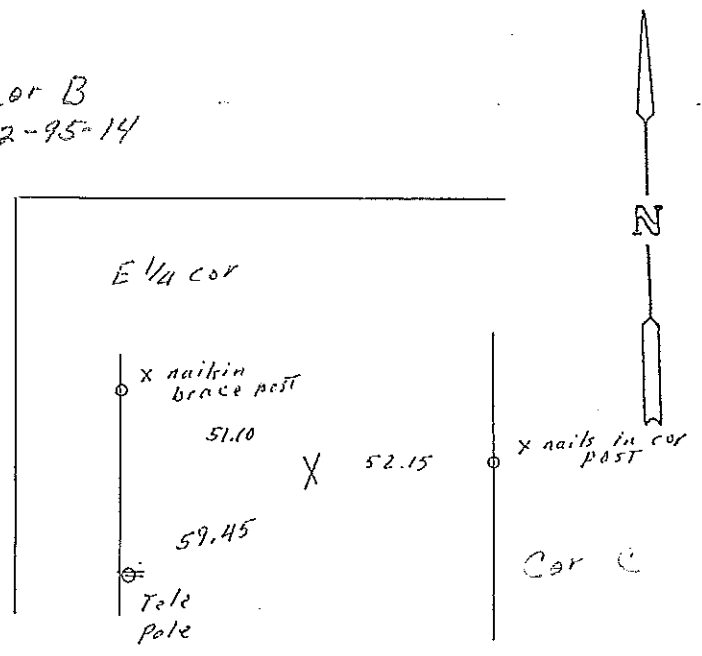
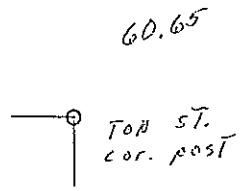
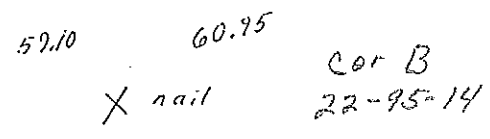
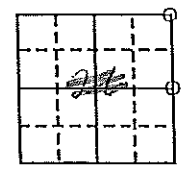
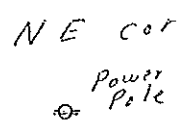
(book, page, document number, etc.)
 Show reason for preparing this certificate, the evidence and detailed procedures used in establishing the corner positions and monumentation found or placed.)

Monument Description and Remarks: Found nail in both NE cor and E 1/4 cor

PLAN - VIEW

(Show a minimum of three reference ties to durable physical objects, relevant monuments and physical conditions that will enable recovery of the corner.)

*Section 22-95-14
 As referred to in
 Engr. Tie Book*

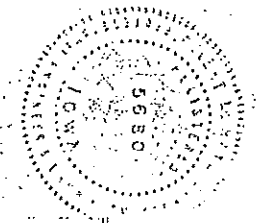


I hereby certify that the survey work was completed and this certificate was prepared by me or under my direct personal supervision and that I am a duly registered land surveyor under the laws of the state of Iowa.

Signature: R. L. Haylock
 Name typed or printed: Robert L. Haylock
 Date: 2-24-93 Reg. No. 5680

Corners	List Corners to be Indexed Section	Twp	Range
NE	26	95 N	14 W
E 1/4	26	95 N	14 W

SEAL



DOCUMENT No. 01716 FILED FOR RECORD THE 25th DAY OF February, 1993 AT 8:30 Leitha N. Ross Recorder
 RECORDING FEE \$ 5.00 O'CLOCK A M. BOOK 151 PAGE 193 By Leitha N. Ross Deputy