

PREPARED BY KENNETH D. STARK 1622 SOUTH TAFT AVENUE, MASON CITY, IOWA 50401 (641) 423-7947

## UNITED STATES PUBLIC LAND SURVEY CORNER CERTIFICATE OF

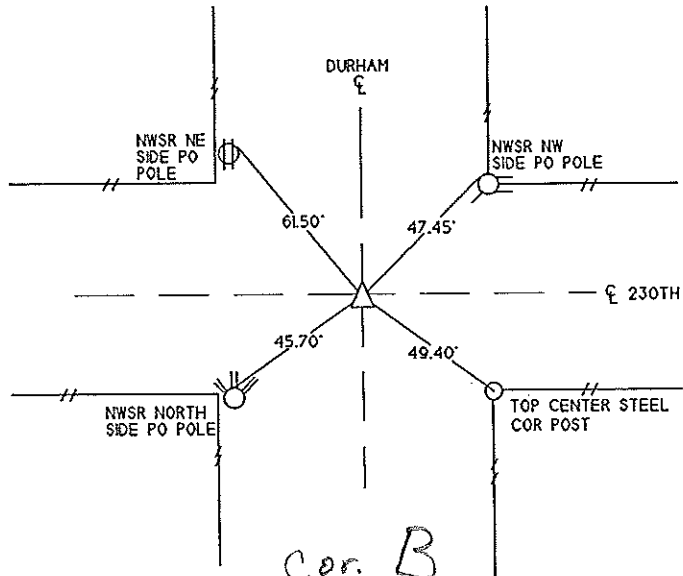
LAND SURVEY MONUMENTS SITUATED IN SECTION 22, TOWNSHIP 95N, RANGE 14W, OF THE 5th PRINCIPAL MERIDIAN  
CHICKASAW COUNTY, IOWA PREVIOUSLY RECORDED IN (NOT APPLICABLE) IN COUNTY RECORDER'S OFFICE.

MONUMENT DESCRIPTION AND REMARKS:

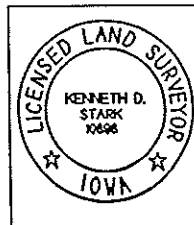
SE COR - FOUND 1/2" IRON PIN 14" DEEP PER COUNTY ENGINEER RECORD

REASON FOR CERT: NO CERT OF RECORD

### PLAN VIEW



Cor. B  
22-95-14



I HEREBY HEREBY CERTIFY THAT THIS LAND SURVEYING DOCUMENT WAS PREPARED AND THE RELATED SURVEY WAS PERFORMED BY ME OR UNDER MY PERSONAL SUPERVISION AND THAT I AM A DULY LICENSED SURVEYOR.

*Kenneth D. Stark* 01-20-09  
KENNETH D. STARK DATE  
LICENSE NUMBER 10698  
MY LICENSE RENEWAL DATE IS DECEMBER 31, 2009  
PAGES OR SHEETS COVERED BY THIS SEAL 1

LIST OF CORNERS TO BE INDEXED			
CORNERS	SECTION	TWP	RANGE
SE COR	22	95	14

