

Herold - Reicks Surveying, 18 East Main Street, New Hampton, IA 50659, Ph. 641-394-3725 Fax 641-394-3718

### UNITED STATES PUBLIC LAND SURVEY CORNER CERTIFICATE

Land Survey Monuments situated in Section 28, Township 95 North, Range 14 West of the Fifth Principal Meridian, Chickasaw County, Iowa. Previously not recorded in the County Recorder's office.

This certificate is being prepared in compliance with Iowa Code Chapter 355.11 because:

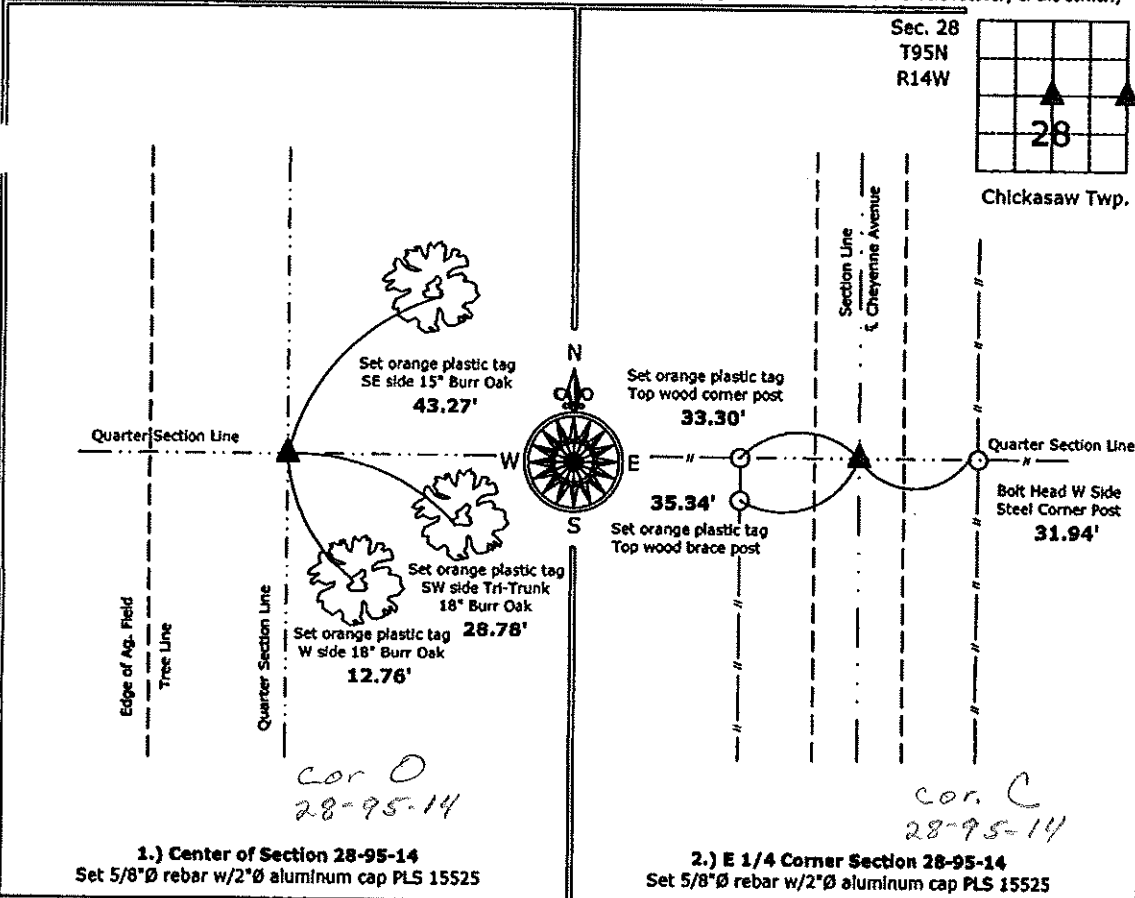
- There is no certificate on file for this corner.
- There are no longer three valid ties of record.
- There are changes to reference ties of record.
- There is change of monumentation of record.
- To clarify description of record monument (ties).

**Monument Description and Remarks:**

- 1.) **Center of Section:** Set 5/8"Ø rebar w/2"Ø aluminum cap PLS 15525 at the intersection of the Quarter Section Lines.
- 2.) **E 1/4 Corner:** Information obtained from county engineer notes indicates a stone and iron pin. Search for and was unable to recover. Set 5/8"Ø rebar w/2"Ø aluminum cap PLS 15525.

#### PLAN - VIEW

(Show a minimum of three reference ties to durable physical objects, relevant monuments and physical conditions that will enable recovery of the corner.)



1.) **Center of Section 28-95-14**  
Set 5/8"Ø rebar w/2"Ø aluminum cap PLS 15525

2.) **E 1/4 Corner Section 28-95-14**  
Set 5/8"Ø rebar w/2"Ø aluminum cap PLS 15525



I hereby certify that this land surveying document was prepared and the related survey work was performed by me or under my direct personal supervision and that I am a duly licensed Land Surveyor under the laws of the State of Iowa.

*Paul R. Herold* 12-31-09  
Paul R. Herold Date:  
License number 15525  
My license renewal date is December 31, 2010.  
Sheets covered by this seal: Individual sheet only

List Corners to be Indexed			
Corners	Section	Twp.	Range
Center	28	95	14
E 1/4	28	95	14

Project Number: 2009-148  
FB: Chickasaw County 2, Pgs. 23-26