

Prepared by & Return to Harold - Reicks Surveying, 10 East Main Street, New Hampton, IA 50659, Ph. 641-354-2725

**UNITED STATES PUBLIC LAND SURVEY CORNER CERTIFICATE**

Land Survey Monuments situated in Section **28**, Township **95 North**, Range **14 West** of the Fifth Principal Meridian, **Chickasaw** County, Iowa. Not previously recorded in the County Recorder's office.

This certificate is being prepared in compliance with Iowa Code Chapter 355.11 because:

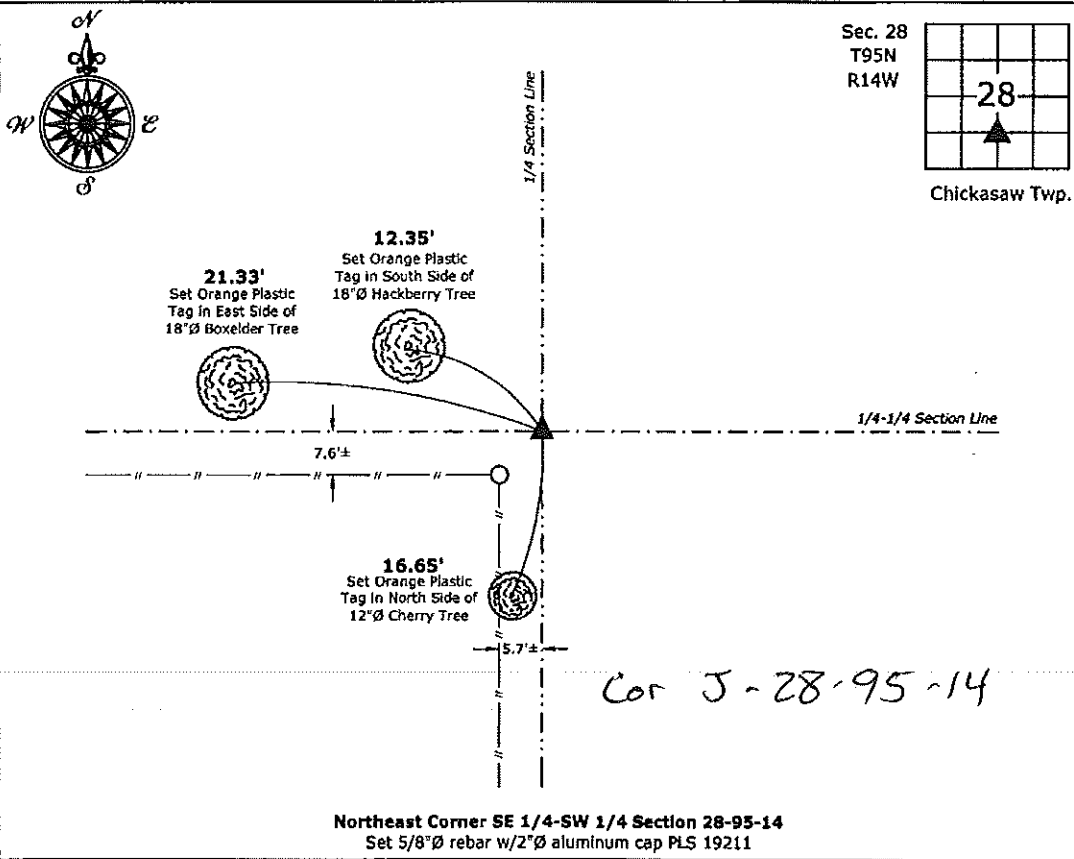
- There is no certificate on file for this corner.
- There are no longer three valid ties of record.
- There are changes to reference ties of record.
- There is change of monumentation of record.
- To clarify description of record monument (ties).

Monument Description and Remarks:

**Northeast Corner SE 1/4-SW 1/4:** Set 5/8"Ø rebar w/2"Ø aluminum cap PLS 19211 equidistant and on line between the South 1/4 Corner and Center of Section 28.

**PLAN - VIEW**

(Show a minimum of three reference ties to durable physical objects, relevant monuments and physical conditions that will enable recovery of the corner.)



I hereby certify that this land surveying document was prepared and the related survey work was performed by me or under my direct personal supervision and that I am a duly licensed Land Surveyor under the laws of the State of Iowa.

*Kirk D. Reicks 12-24-15*  
 Kirk D. Reicks Date:  
 License number 19211  
 My license renewal date is December 31, 2016.  
 Sheets covered by this seal: Individual sheet only

List Corners to be Indexed			
Corners	Section	Twp.	Range
NE-SE-SW	28	95	14
Project Number: 2015-163			
FB: Chickasaw County 7, Pgs. 46-47			

Fig. S:\\_L3D Projects\County Control Systems\CHICKASAW\CHICK-32\CHICK-32.dwg, 12/24/2015 10:22:37 AM