

Herold - Reicks Surveying, 10 East Main Street, New Hampton, IA 50659, Ph. 641-394-2725 Fax 641-394-2778

Sec 21-95-14
 95 referred in
 Engr. Tie Book

UNITED STATES PUBLIC LAND SURVEY CORNER CERTIFICATE

Land Survey Monuments situated in Section ²¹28, Township 95 North, Range 14 West of the Fifth Principal Meridian, Chickasaw County, Iowa. Previously not recorded in the County Recorder's office.

This certificate is being prepared in compliance with Iowa Code Chapter 355.11 because:

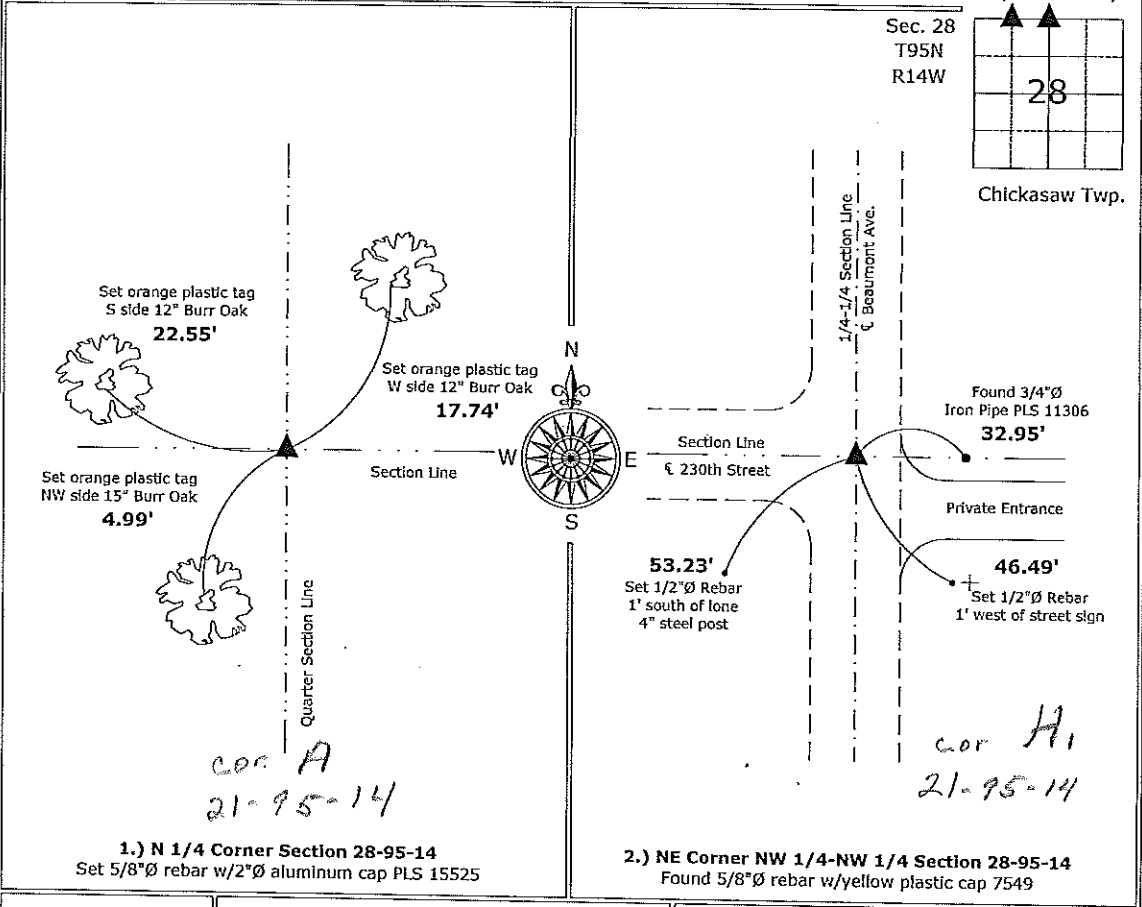
- There is no certificate on file for this corner.
- There are no longer three valid ties of record.
- There are changes to reference ties of record.
- There is change of monumentation of record.
- To clarify description of record monument (ties).

Monument Description and Remarks:

- 1.) **N 1/4 Corner:** Set 5/8"Ø rebar w/2"Ø aluminum cap PLS 15525 by doubling the distance from the Northwest Corner to and across the NE Corner NW 1/4 - NE 1/4.
- 2.) **NE Corner NW 1/4-NW 1/4:** Found 5/8"Ø rebar w/yellow plastic cap 7549 with information obtained from a recorded Survey and Plat made by Wray A. Childers, signed on May 12th 1989 in Book 142, Page 456.

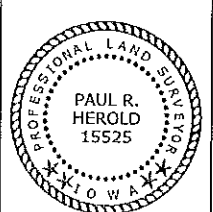
PLAN - VIEW

(Show a minimum of three reference ties to durable physical objects, relevant monuments and physical conditions that will enable recovery of the corner.)



1.) **N 1/4 Corner Section 28-95-14**
 Set 5/8"Ø rebar w/2"Ø aluminum cap PLS 15525

2.) **NE Corner NW 1/4-NW 1/4 Section 28-95-14**
 Found 5/8"Ø rebar w/yellow plastic cap 7549



I hereby certify that this land surveying document was prepared and the related survey work was performed by me or under my direct personal supervision and that I am a duly licensed Land Surveyor under the laws of the State of Iowa.

Paul R. Herold 1-4-10
 Paul R. Herold Date:
 License number 15525
 My license renewal date is December 31, 2010.
 Sheets covered by this seal: Individual sheet only

List Corners to be Indexed			
Corners	Section	Twp.	Range
N 1/4	28	95	14
NE-NW-NW	28	95	14

Project Number: 2009-148
 FB: Chickasaw County 2, Pgs. 23-26