



Prepared by & Return to: Kirk D. Reicks, HRS, LLC, 10 East Main Street, New Hampton, IA 50659, Phone 641-394-2725

United States Public Land Survey Corner Certificate

Land Survey Monument situated in
 Section 28, Township 95 North, Range 14 West of the Fifth Principal Meridian, Chickasaw County, Iowa.
 Not on file in the County Recorder's Office.

This certificate is being prepared in compliance with Iowa Code Chapter 355.11 because:

- There is no certificate on file for this corner.
- There are no longer three valid ties of record.
- There are changes to reference ties of record.
- There is change of monumentation of record.
- To clarify description of record monument (ties).

Monument Description and Remarks:

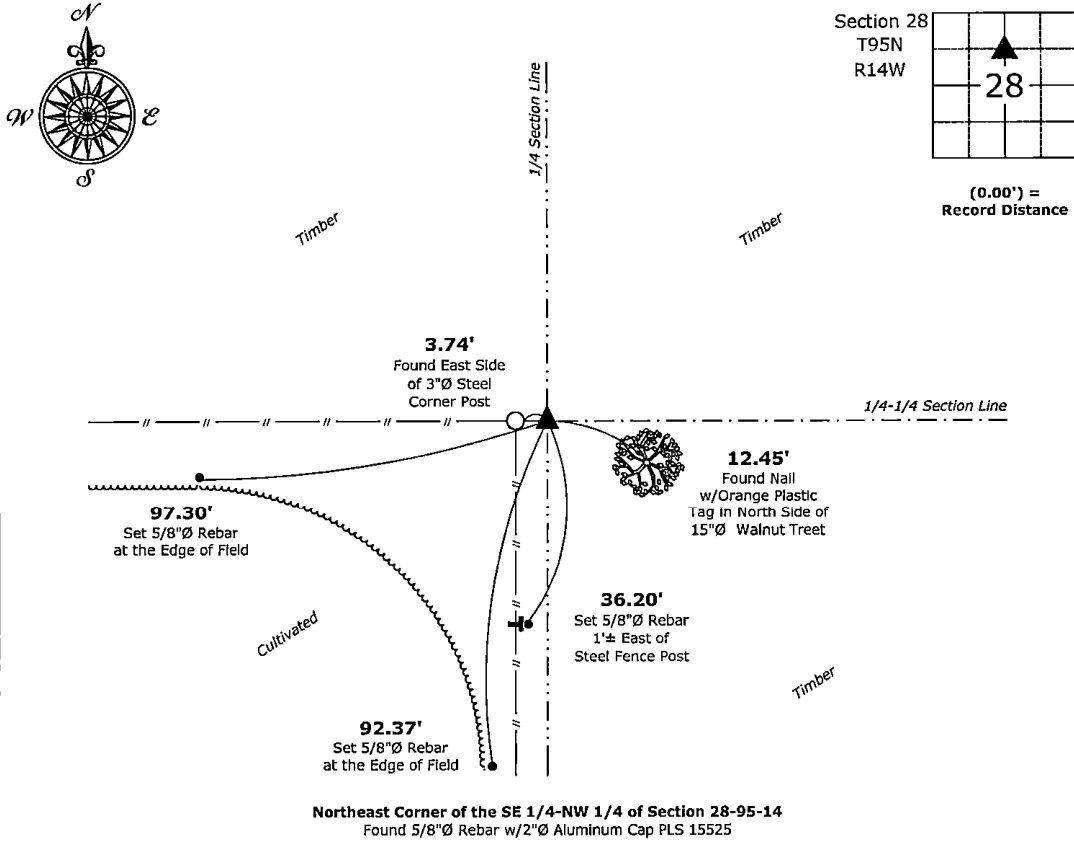
Northeast Corner of the SE 1/4-NW 1/4:

Found 5/8"Ø Rebar w/2"Ø Aluminum Cap PLS 15525 with information obtained from a Survey and Plat, as recorded in Document #2012-0347 on file in the County Recorder's Office. After locating the monument and references ties matching information on a previously recorded Section Corner Certificate recorded in Document #2012-0106 on file in the County Recorder's Office, it was confirmed the said Certificate was incorrectly filed and indexed for the Northeast Corner of the SW 1/4-NE 1/4 of said Section.

Note: Rec. Doc. #2012-0106 should not be used for future survey work and further voided.

Plan View - Not to Scale

(Show a minimum of three reference ties to durable physical objects, relevant monuments and physical conditions that will enable recovery of the corner.)



Northeast Corner of the SE 1/4-NW 1/4 of Section 28-95-14
 Found 5/8"Ø Rebar w/2"Ø Aluminum Cap PLS 15525



I hereby certify that this land surveying document was prepared and the related survey work was performed by me or under my direct personal supervision and that I am a duly licensed Land Surveyor under the laws of the State of Iowa.

Kirk D. Reicks 11-11-2025
 Kirk D. Reicks Date:
 License Number 19211
 My license renewal date is December 31, 2026.
 Sheets covered by this seal: Individual sheet only

List Corner to be Indexed			
Corner	Section	Township	Range
NE-SE-NW	28	95	14

Project Number: 2025-106

FB: Chickasaw 14, Page(s) 23-24

File: S:\Projects - NHO\County Control Systems - NHO\CHICKASAW\CHICK-32\CHICK-32 - 2025.dwg, 11/11/2025 7:31:09 AM