

Prepared by & Return to: Herold - Reicks Surveying, 18 East Main Street, New Hampton, IA 50659, Ph. 641-394-2725

### UNITED STATES PUBLIC LAND SURVEY CORNER CERTIFICATE

Land Survey Monuments situated in Section 29, Township 95 North, Range 14 West of the Fifth Principal Meridian, Chickasaw County, Iowa. 1.) Previously recorded in Bk. 2004, Pg. 1396 in the County Recorder's office. 2.) Previously recorded in Bk. 2007, Pg. 0577 in the County Recorder's office.

This certificate is being prepared in compliance with Iowa Code Chapter 355.11 because:

- 1 & 2
- There is no certificate on file for this corner.
  - There are no longer three valid ties of record.
  - There are changes to reference ties of record.
  - There is change of monumentation of record.
  - To clarify description of record monument (ties).

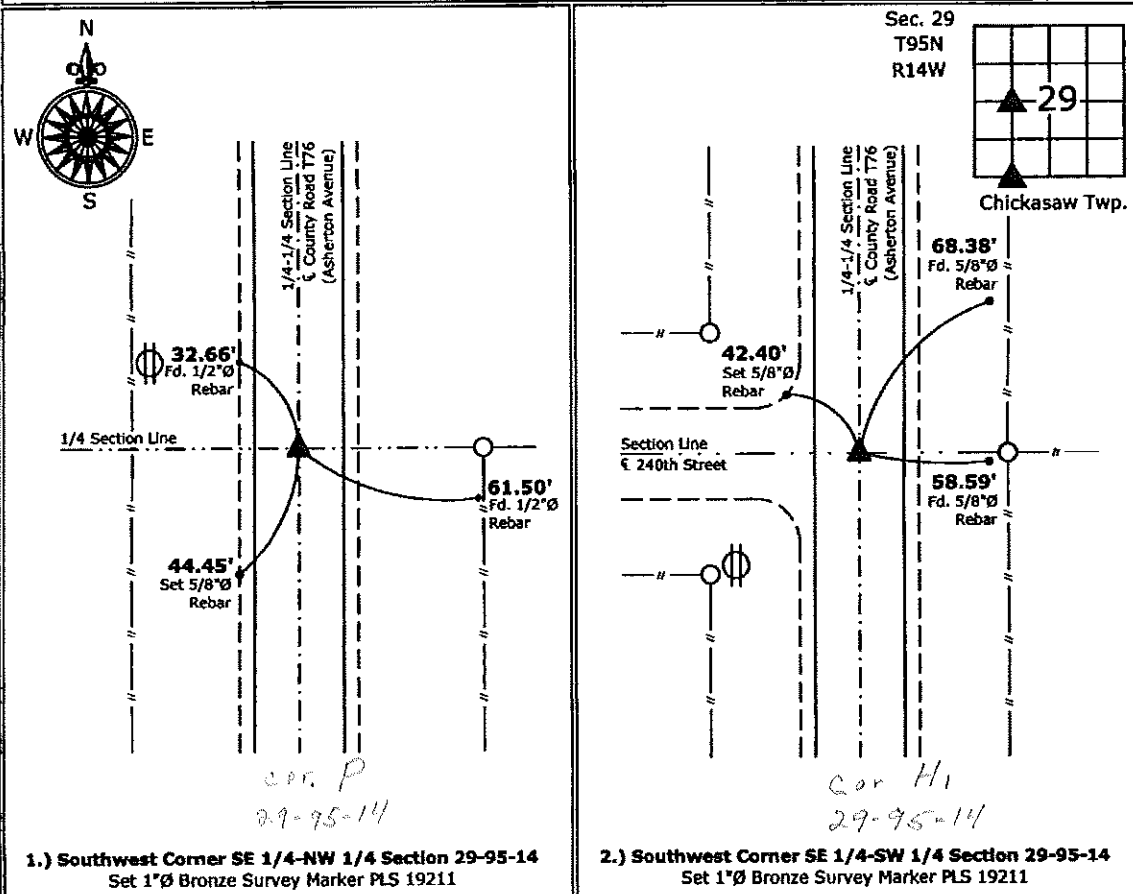
Monument Description and Remarks:

**1.) Southwest Corner SE 1/4-NW 1/4:** Set 1"Ø Bronze Survey Marker PLS 19211 at previous location (Found MAG Nail w/Stainless Steel Washer PLS 16961) by means of coordinates obtained prior to highway reconstruction, Project No. STP-S-CO19(80)--5E-19.

**2.) Southwest Corner SE 1/4-SW 1/4:** Set 1"Ø Bronze Survey Marker PLS 19211 at previous location (Found MAG Nail w/Stainless Steel Washer PLS 11442) by means of coordinates obtained prior to highway reconstruction, Project No. STP-S-CO19(80)--5E

#### PLAN - VIEW

(Show a minimum of three reference ties to durable physical objects, relevant monuments and physical conditions that will enable recovery of the corner.)



I hereby certify that this land surveying document was prepared and the related survey work was performed by me or under my direct personal supervision and that I am a duly licensed Land Surveyor under the laws of the State of Iowa.

*Kirk D. Reicks* 7-5-12  
 Kirk D. Reicks Date:

License number 19211

#### List Corners to be Indexed

Corners	Section	Twp.	Range
SW-SE-NW	29	95	14
SW-SE-SW	29	95	14

Prepared by & Return to: Harold - Reicks Surveying, 161 East Main Street, New Hampton, IA 56658, Ph. 641-994-2725

### UNITED STATES PUBLIC LAND SURVEY CORNER CERTIFICATE

Land Survey Monuments situated in Section 29, Township 95 North, Range 14 West of the Fifth Principal Meridian, Chickasaw County, Iowa. 1., 2.) Not previously recorded in the County Recorder's office.

This certificate is being prepared in compliance with Iowa Code Chapter 355.11 because:

- 1 & 2 There is no certificate on file for this corner.
- There are no longer three valid ties of record.
- There are changes to reference ties of record.
- There is change of monumentation of record.
- To clarify description of record monument (ties).

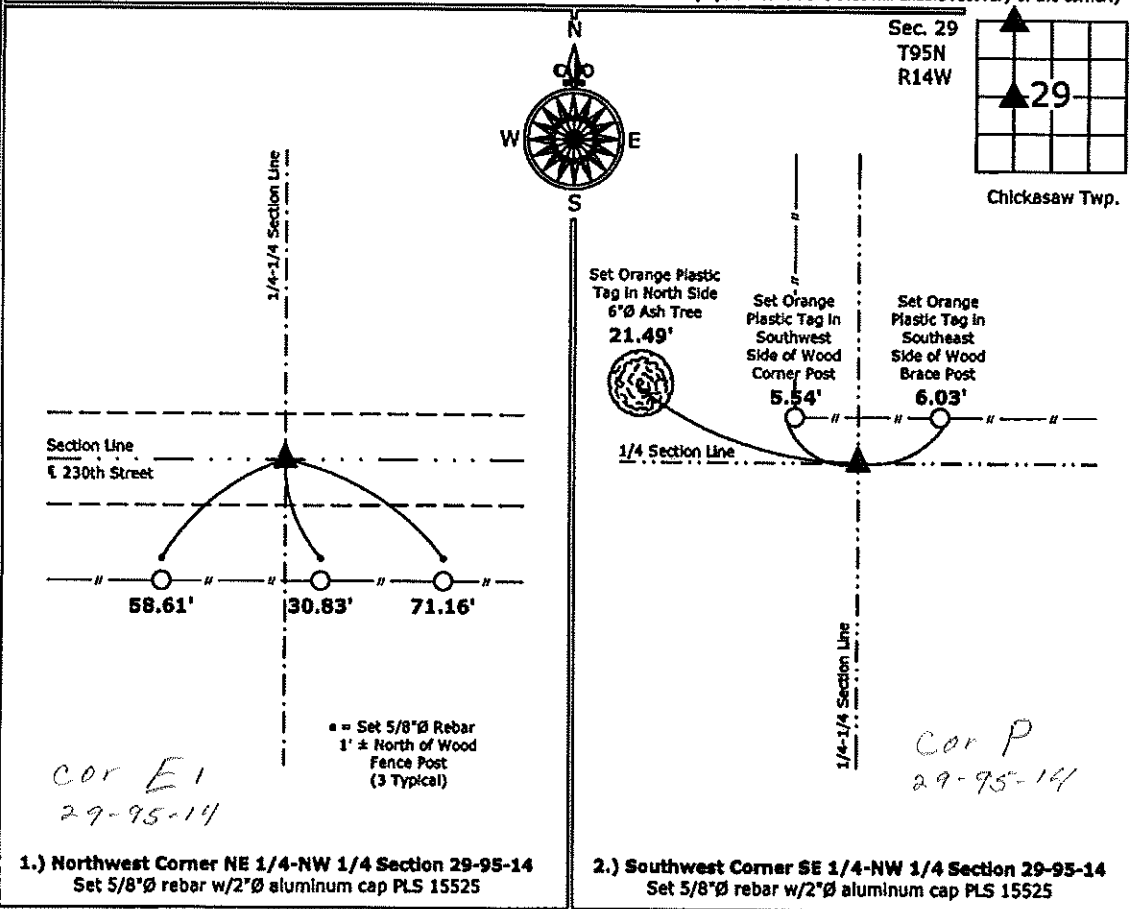
Monument Description and Remarks:

1.) Northwest Corner NE 1/4-NW 1/4: Set 5/8"Ø rebar w/2"Ø aluminum cap PLS 15525 equidistant and online between the Northwest and North 1/4 Corners of Section 29.

2.) Southwest Corner SE 1/4-NW 1/4: Set 5/8"Ø rebar w/2"Ø aluminum cap PLS 15525 equidistant and online between the West 1/4 Corner and Center of Section 29.

#### PLAN - VIEW

(Show a minimum of three reference ties to durable physical objects, relevant monuments and physical conditions that will enable recovery of the corner.)



1.) Northwest Corner NE 1/4-NW 1/4 Section 29-95-14  
 Set 5/8"Ø rebar w/2"Ø aluminum cap PLS 15525

2.) Southwest Corner SE 1/4-NW 1/4 Section 29-95-14  
 Set 5/8"Ø rebar w/2"Ø aluminum cap PLS 15525



I hereby certify that this land surveying document was prepared and the related survey work was performed by me or under my direct personal supervision and that I am a duly licensed Land Surveyor under the laws of the State of Iowa.

*Paul R. Herold* 2-15-12  
 Paul R. Herold Date:  
 License number 15525  
 My license renewal date is December 31, 2012.  
 Sheets covered by this seal: Individual sheet only

List Corners to be Indexed			
Corners	Section	Twp.	Range
NW-NE-NW	29	95	14
SW-SE-NW	29	95	14

Project Number: 2012-013  
 FB: Chickasaw County 4, Pg. 32

Section 20-95-14  
As referred to in  
Engr. Tie Book

FILED 2004-1396  
RECORDER'S OFFICE  
CHICKASAW COUNTY, IOWA  
2004 JUN 18 PM 12 46  
CINDY MESSERSMITH  
COUNTY RECORDER

TEKIPPE ENGINEERING, P.C., 128 South Vine Street, West Union, Iowa 52175 Phone (563) 422-6131

UNITED STATES PUBLIC LAND SURVEY CORNER CERTIFICATE

OF 20  
Land Survey Monuments situated in Section 29, Township 95 North, Range 14 West of the Fifth Principal Meridian, CHICKASAW County, Iowa.  
Previously recorded in none in County Recorder's Office.  
(book, page, document number, etc.)

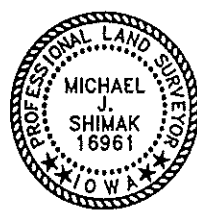
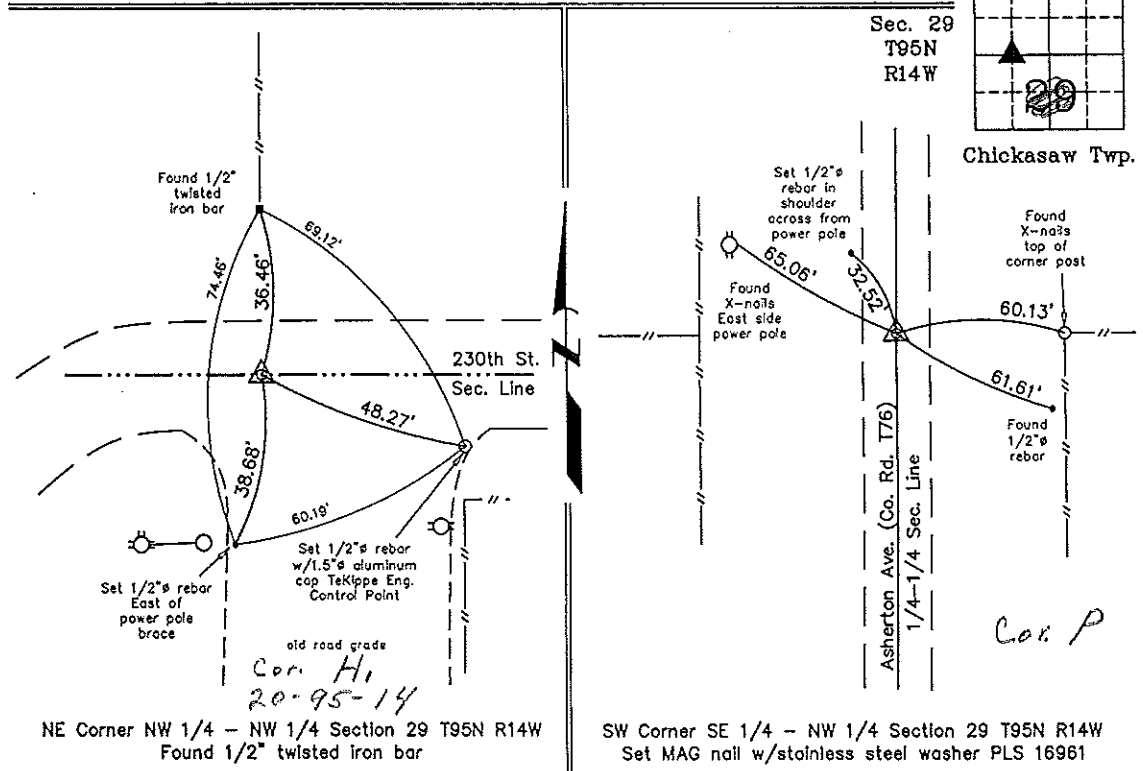
(Show reason for preparing this certificate, the evidence and detailed procedures used in establishing the corner positions and monumentation found or placed.)

Monument Description and Remarks: NE Corner NW 1/4 - NW 1/4 Section 29 T95N R14W:  
Found 1/2" twisted iron bar with information obtained from the Chickasaw County  
Engineer's Office in Field Book Chickasaw Twp. Corner Ties, Section 20, Corner H1.

SW Corner SE 1/4 - NW 1/4 Section 29 T95N R14W: Set MAG nail w/stainless steel  
washer PLS 16961 using reference ties noted in the Chickasaw County Engineer's Office  
in Field Book Chickasaw Twp. Corner Ties, Section 29, Corner G1.

PLAN - VIEW

(Show a minimum of three reference ties to durable physical objects, relevant monuments and physical conditions that will enable recovery of the corner.)



I hereby certify that this land surveying document was prepared and the related survey work was performed by me or under my direct personal supervision and that I am a duly licensed Land Surveyor under the laws of the State of Iowa.  
 Michael J. Shimak June 18, 2004  
 Michael J. Shimak Date  
 License number 16961  
 My license renewal date is December 31, 2005.  
 Sheets covered by this seal: Individual

List Corners to be Indexed			
Corners	Section	Twp.	Range
NE-NW-NW	29	95N	14W
SW-SE-NW	29	95N	14W

X:\Section Corners\Sec. 29\29-95-14bl.dwg  
 Project Number 04137.LS  
 FB. 46L PG. 7-8