

Herold - Racks Surveying, 18 East Main Street, New Hampton, IA 50659, Ph. 641-394-2725 Fax 641-394-2718

**UNITED STATES PUBLIC LAND SURVEY CORNER CERTIFICATE**

Land Survey Monuments situated in Section 29, Township 95 North, Range 14 West of the Fifth Principal Meridian, Chickasaw County, Iowa. Previously not recorded in the County Recorder's office.

This certificate is being prepared in compliance with Iowa Code Chapter 355.11 because:

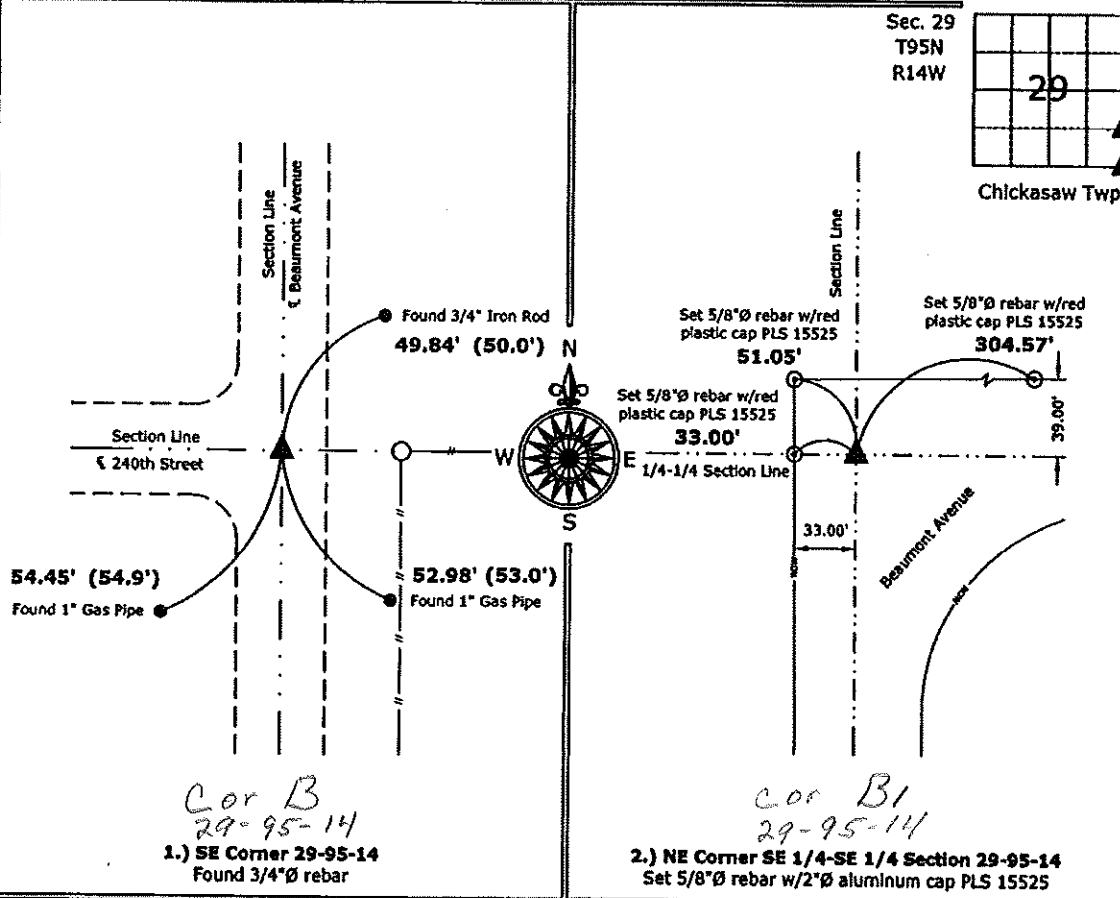
- There is no certificate on file for this corner.
- There are no longer three valid ties of record.
- There are changes to reference ties of record.
- There is change of monumentation of record.
- To clarify description of record monument (ties).

**Monument Description and Remarks:**

- 1.) **SE Corner:** Found 3/4"Ø rebar using information obtained from county engineers office in the book Section Ties, Chickasaw Township, Section 29 Corner "B".
- 2.) **NE Corner SE 1/4-SE 1/4:** Set 5/8"Ø rebar w/2"Ø aluminum cap PLS 15525 equidistant online between the East Quarter Corner and Southeast Corner.

**PLAN - VIEW**

(Show a minimum of three reference ties to durable physical objects, relevant monuments and physical conditions that will enable recovery of the corner.)



I hereby certify that this land surveying document was prepared and the related survey work was performed by me or under my direct personal supervision and that I am a duly licensed Land Surveyor under the laws of the State of Iowa.

*Paul R. Herold* 12-31-09  
 Paul R. Herold Date:  
 License number 15525  
 My license renewal date is December 31, 2010.  
 Sheets covered by this seal: Individual sheet only

List Corners to be Indexed			
Corners	Section	Twp.	Range
SE	29	95	14
NE-SE-SE	29	95	14

Project Number: 2009-148  
 FB: Chickasaw County 2, Pgs. 23-26

File: S:\\_Projects\2009\2009-148\dwg\2009-148.dwg, 12/31/2009 10:28:28 AM