

Section 20-95-14
As referred to in
Engr. Tie Book

FILED 2004-1396
RECORDER'S OFFICE
CHICKASAW COUNTY, IOWA
2004 JUN 18 PM 12 46
CINDY MESSERSMITH
COUNTY RECORDER

TeKIPPE ENGINEERING, P.C., 128 South Vine Street, West Union, Iowa 52175 Phone (563) 422-6131

UNITED STATES PUBLIC LAND SURVEY CORNER CERTIFICATE

OF 20
Land Survey Monuments situated in Section 29, Township 95 North, Range 14 West of the Fifth Principal Meridian, CHICKASAW County, Iowa.
Previously recorded in none in County Recorder's Office.
(book, page, document number, etc.)

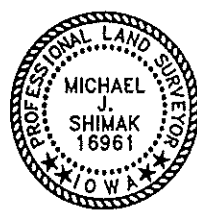
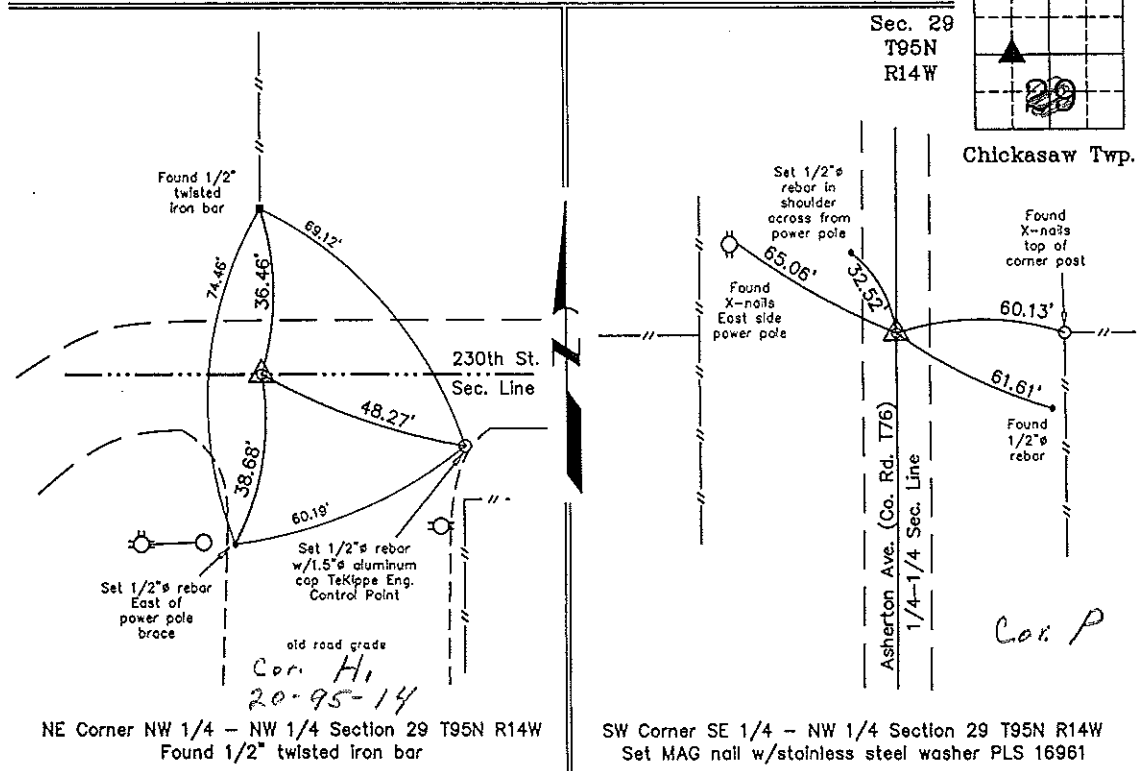
(Show reason for preparing this certificate, the evidence and detailed procedures used in establishing the corner positions and monumentation found or placed.)

Monument Description and Remarks: NE Corner NW 1/4 - NW 1/4 Section 29 T95N R14W:
Found 1/2" twisted iron bar with information obtained from the Chickasaw County
Engineer's Office in Field Book Chickasaw Twp. Corner Ties, Section 20, Corner H1.

SW Corner SE 1/4 - NW 1/4 Section 29 T95N R14W: Set MAG nail w/stainless steel
washer PLS 16961 using reference ties noted in the Chickasaw County Engineer's Office
in Field Book Chickasaw Twp. Corner Ties, Section 29, Corner G1.

PLAN - VIEW

(Show a minimum of three reference ties to durable physical objects, relevant monuments and physical conditions that will enable recovery of the corner.)



I hereby certify that this land surveying document was prepared and the related survey work was performed by me or under my direct personal supervision and that I am a duly licensed Land Surveyor under the laws of the State of Iowa.

Michael J. Shimak June 18, 2004
Michael J. Shimak Date
License number 16961
My license renewal date is December 31, 2005.
Sheets covered by this seal: Individual

List Corners to be Indexed			
Corners	Section	Twp.	Range
NE-NW-NW	29	95N	14W
SW-SE-NW	29	95N	14W

X:\Section Corners\Sec. 29\29-95-14bl.dwg
Project Number 04137.LS
FB. 46L PG. 7-8