

Chickasaw Co. Recorder
 Cindy Messersmith
Fee Book 2009-2383
 12/31/2009 8:04:13PM
 SCC SEC COR CERT
 Book: Page: # Pages: 1
 Total Fees: \$9.00

Herold - Racks Surveying, 10 East Main Street, New Hampton, IA 50655, Ph. 641-394-2725 Fax 641-394-2718

Sec 20-95-14,
 As referred in
 Engr. Tie Book

UNITED STATES PUBLIC LAND SURVEY CORNER CERTIFICATE

Land Survey Monuments situated in Section **29**, Township **95 North**, Range **14 West** of the Fifth Principal Meridian, **Chickasaw County, Iowa**. Previously not recorded in the County Recorder's office.

This certificate is being prepared in compliance with Iowa Code Chapter 355.11 because:

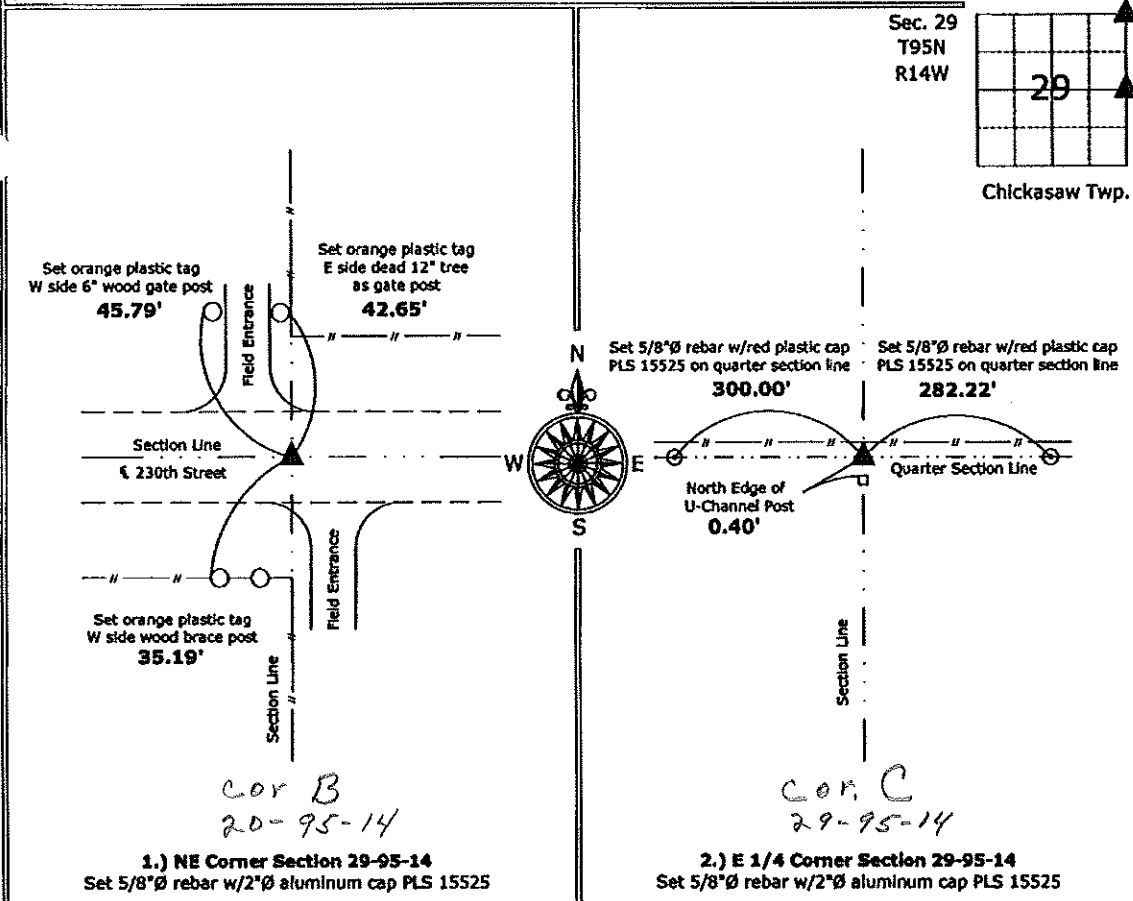
- There is no certificate on file for this corner.
- There are no longer three valid ties of record.
- There are changes to reference ties of record.
- There is change of monumentation of record.
- To clarify description of record monument (ties).

Monument Description and Remarks:

- 1.) **NE Corner:** Set 5/8"Ø rebar w/2"Ø aluminum cap PLS 15525 using information obtained from the County Engineer's Office.
- 2.) **E 1/4 Corner:** Set 5/8"Ø rebar w/2"Ø aluminum cap PLS 15525 equidistant online between the Northeast and Southeast Corners.

PLAN - VIEW

(Show a minimum of three reference ties to durable physical objects, relevant monuments and physical conditions that will enable recovery of the corner.)



I hereby certify that this land surveying document was prepared and the related survey work was performed by me or under my direct personal supervision and that I am a duly licensed Land Surveyor under the laws of the State of Iowa.

Paul R. Herold 12-31-09
 Paul R. Herold Date:
 License number 15525
 My license renewal date is December 31, 2010.
 Sheets covered by this seal: Individual sheet only

List Corners to be Indexed			
Corners	Section	Twp.	Range
NE	29	95	14
E 1/4	29	95	14

Project Number: 2009-148
 FB: Chickasaw County 2, Pgs. 23-26

File: S:_Projects\2009-148\dwg\2009-148.dwg, 12/31/2009 11:12:46