

9/25/2006
2006-1980

TeKIPPE ENGINEERING, P.C., 128 South Vine Street, West Union, Iowa 52175 Phone (563) 422-5131

UNITED STATES PUBLIC LAND SURVEY CORNER CERTIFICATE

OF

Land Survey Monuments situated in Section 2, Township 95 North, Range 14 West of the Fifth Principal Meridian, Chickasaw County, Iowa.

Previously recorded in none in County Recorder's Office.
(book, page, document number, etc.)

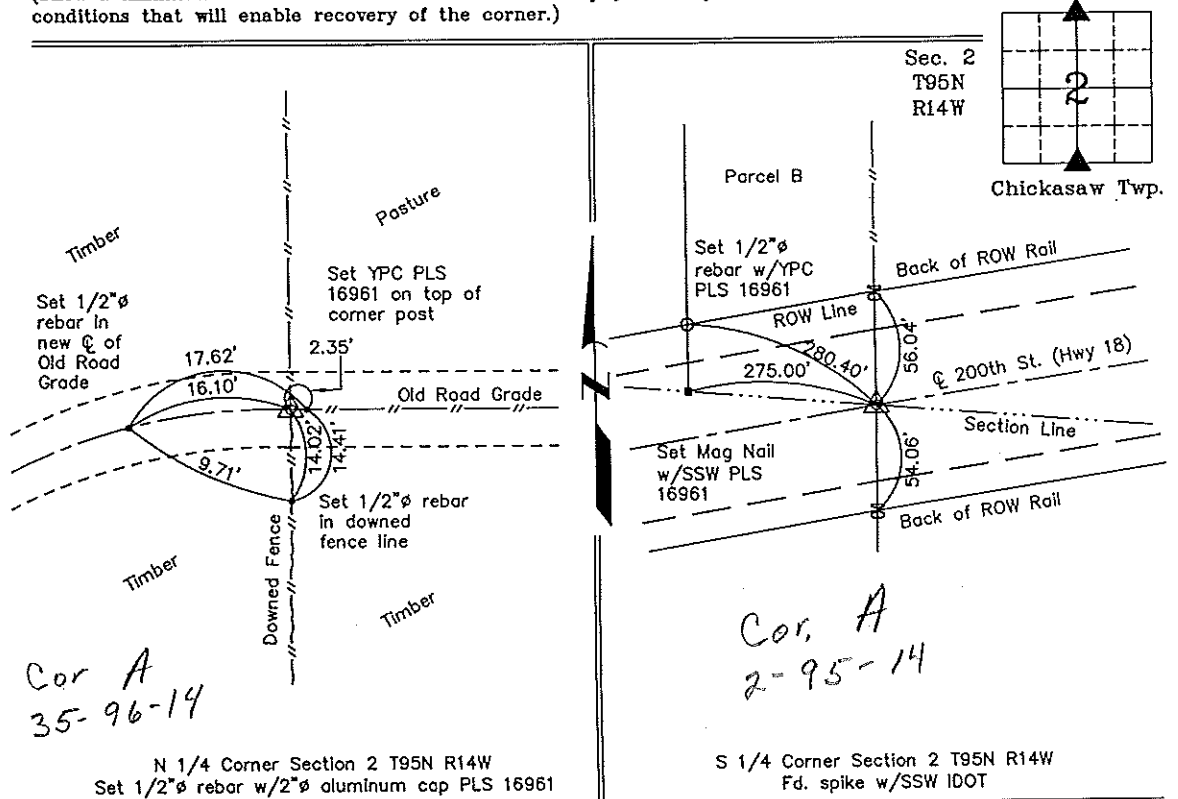
(Show reason for preparing this certificate, the evidence and detailed procedures used in establishing the corner positions and monumentation found or placed.)

Monument Description and Remarks: N 1/4 Corner Section 2 T95N R14W: Set 1/2"Ø rebar with 2"Ø aluminum cap PLS 16961 at the intersection of the Centerline of the old road and existing fences.

S 1/4 Corner Section 2 T95N R14W: Found spike with Stainless Steel Washer IDOT.

PLAN - VIEW

(Show a minimum of three reference ties to durable physical objects, relevant monuments and physical conditions that will enable recovery of the corner.)



Cor A
35-96-14

Cor. A
2-95-14

N 1/4 Corner Section 2 T95N R14W
Set 1/2"Ø rebar w/2"Ø aluminum cap PLS 16961

S 1/4 Corner Section 2 T95N R14W
Fd. spike w/SSW IDOT



I hereby certify that this land surveying document was prepared and the related survey work was performed by me or under my direct personal supervision and that I am a duly licensed Land Surveyor under the laws of the State of Iowa.

Michael J. Shimak September 21, 2006

Michael J. Shimak Date

License number 16961
My license renewal date is December 31, 2007.
Sheets covered by this seal: Individual

| List Corners to be Indexed | | | |
|----------------------------|---------|------|-------|
| Corners | Section | Twp. | Range |
| N 1/4 | 2 | 95N | 14W |
| S 1/4 | 2 | 95N | 14W |

Project Number 04258.15
FE 48M, PGS 23-24

X:\Section Corners\Sec. 02\2-95-14cw.dwg