

UNITED STATES PUBLIC LAND SURVEY CORNER CERTIFICATE OF

Land Survey Monuments situated in Section 30, Township 95, Range 14, of the 5th Principal Meridian, Chickasaw County, Iowa. Previously recorded in Book (Drawer) N/A, Page (Document) N/A

In association with survey for: Steve Bouska

Chickasaw Co. Recorder
Cindy Messersmith
Fee Book 2013-2083
12/20/2013 @ 12:32 PM
SEC COR CERT
Book: _____ Page: _____
Total Fees: \$7.00 # Pages: _____

Reason for preparing Certificate:

- There is no Certificate for the corner on file with the County Recorder.
- Corner position differs from that previously recorded.
- The corner monument has been replaced or modified.
- The existing Certificate reference ties are incorrect or changed.

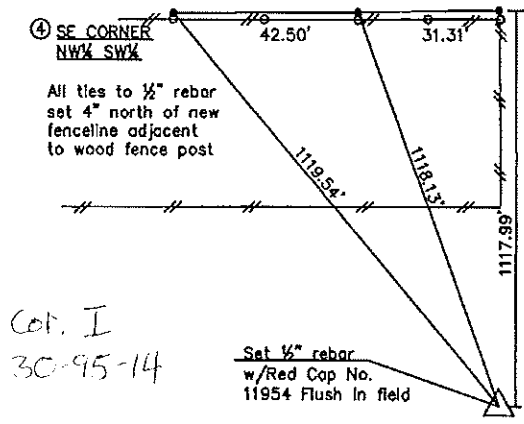
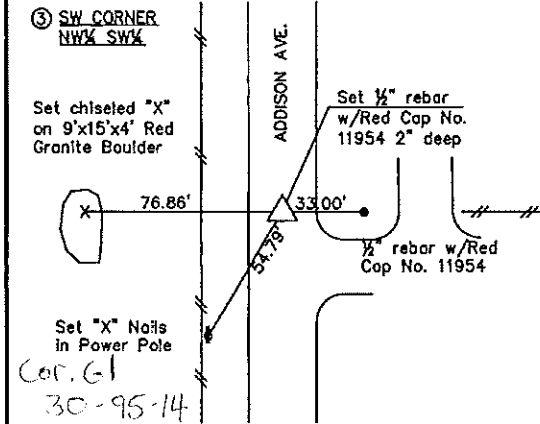
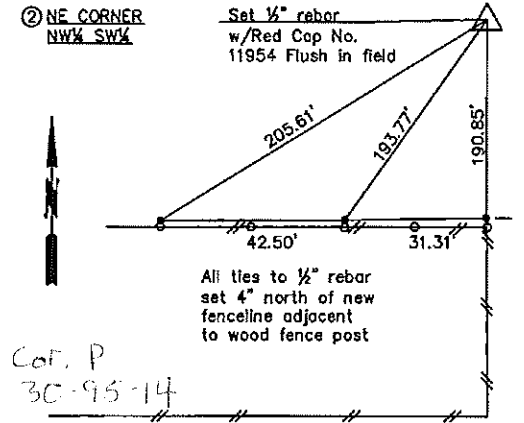
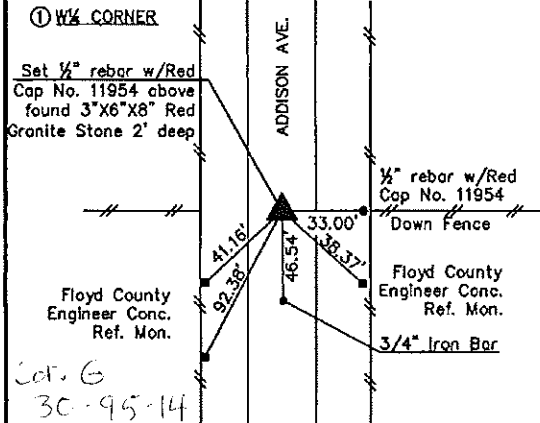
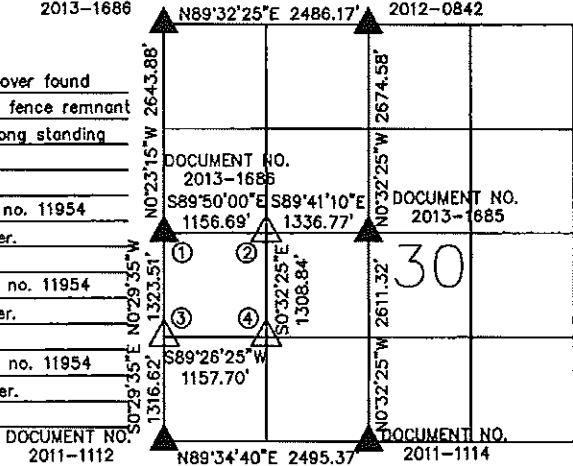
FOR RECORDER'S USE ONLY

Monument Description and Remarks:

- ① NW¹/₄ CORNER - Set 1/2" rebar w/red cap no. 11954 over found 3"x6"x8" Red Granite 2' deep. Stone in line with E-W fence remnant and centerline N-S road. Position of stone fits with long standing occupation of Southwest Quarter.
- ② NE CORNER NW¹/₄-SW¹/₄ - Set 1/2" rebar w/red cap no. 11954 based on existing occupation of the Southwest Quarter.
- ③ SW CORNER NW¹/₄-SW¹/₄ - Set 1/2" rebar w/red cap no. 11954 based on existing occupation of the Southwest Quarter.
- ④ SE CORNER NW¹/₄-SW¹/₄ - Set 1/2" rebar w/red cap no. 11954 based on existing occupation of the Southwest Quarter.

DOCUMENT NO. 2013-1686

DOCUMENT NO. 2012-0842



Certification:
I hereby certify that this land surveying document was prepared by me or under my direct personal supervision and that I am a duly licensed Land Surveyor under the laws of the State of Iowa

Daniel J. Johnson 12-14-13
Daniel J. Johnson Date
License Number 11954
My current license renewal date is Dec. 31, 2014

JOHNSON LAND SURVEYING
3703 165th Street, Blue Grass, IA 52726
Ph: (563) 506-8954

Corner Certificate Prepared By:
Daniel J. Johnson, L.S. #11954

Section 30-97-14
As referred to in
Engr. Tr. Book

Scott A. Steinfadt LS, Ryken Engineering, 403 N. Monroe, Mason City, Ia. 50401 - Ph 641-423-1451 Fax 641-423-1659

UNITED STATES PUBLIC LAND SURVEY CORNER CERTIFICATE

Land Survey Monuments situated in Section OF 25 30 Township 97 North, Range 15 14 West, of the Fifth Principal Meridian, Floyd County, Iowa, Previously recorded in Not Applicable in County Recorder's Office

(Show reason for preparing this certificate, the evidence and detailed procedures used in establishing the corner positions and monumentation found or set.)

Monument Description and Remarks:

E $\frac{1}{4}$ Cor. - History of Corner = 1956, Oct. 29 - Rec's Book 3, page 107 indicates usage of corner, but doesn't indicate type of monumentation at corner.

Previous Co Engr's records indicate that corner is monumented with 'Pin'

Current Co Engr's records indicate that corner is monumented with 'Gas Pipe over steel pin' with ties as shown below.

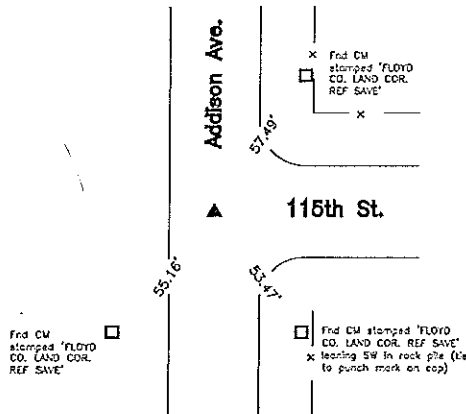
Corner Recovery = Searched area with metal detector and found 1 $\frac{1}{4}$ " O.D. Pinched Yellow Coated Iron Pipe 0.6' deep in centerline of gravel roads N-S & E. Monument found matches that of Co Engr's ties and record ties are within reason. Therefore, used pipe as the correct corner. All ties are plumb distance unless indicated otherwise.

This certificate is being prepared because there are no certificates on file for this corner and this corner was used for a survey in this section for Holm Family Rev. Tr. and W. F. Wahrer.

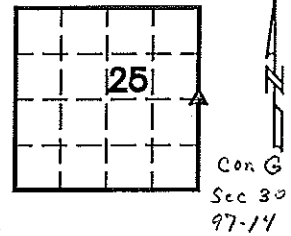
Plan View

(Show a minimum of three reference ties to durable physical objects, relevant monuments, and physical conditions that will enable recovery of the corner.)

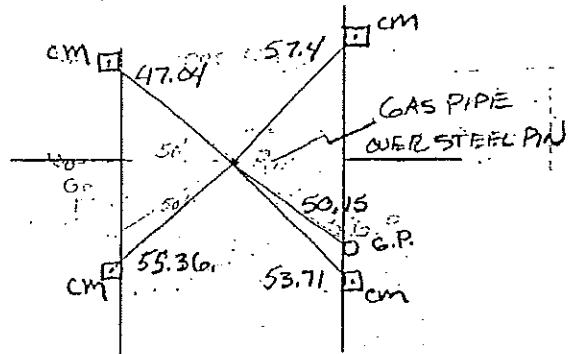
E $\frac{1}{4}$ Cor.



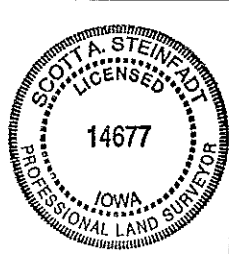
- Legend**
- BC = Nail w/ Bottle Cap
 - BP = Brace Post
 - CP = Corner Post
 - CM = Concrete Monument w/ 1/2" Alum Capped Iron rod in center. (tie to rod)
 - CX = Cut X
 - GP = Gate Post
 - GPw = Nail w/ Green Plastic Washer
 - PP = Power Pole
 - RH = Red Head (Nail in wire)
 - SFP = Steel Fence Post
 - RW = Nail w/ Reflective Round Washer
 - R/W = Iron ROW Rod
 - SM = Nail w/ Yellow Plastic Survey Marker
 - SW = Nail w/ Square Metal Washer
 - TP = Telephone Pedestal
 - TW = Nail w/ Round Metal Washer
 - WFP = Wood Fence Post
 - X = X Nails



CO ENGR'S RECORD TIES



Cor. G
30-97-14



I hereby certify that this land surveying document was prepared and the related survey work was performed by me or under my direct personal supervision and that I am a duly licensed Land Surveyor under the laws of the State of Iowa.

Scott A. Steinfadt
SCOTT A. STEINFADT, LS
Date: 4-13-06 License number: 14677
My license renewal date is December 31, 2006

Pages or sheets covered by this seal: 1

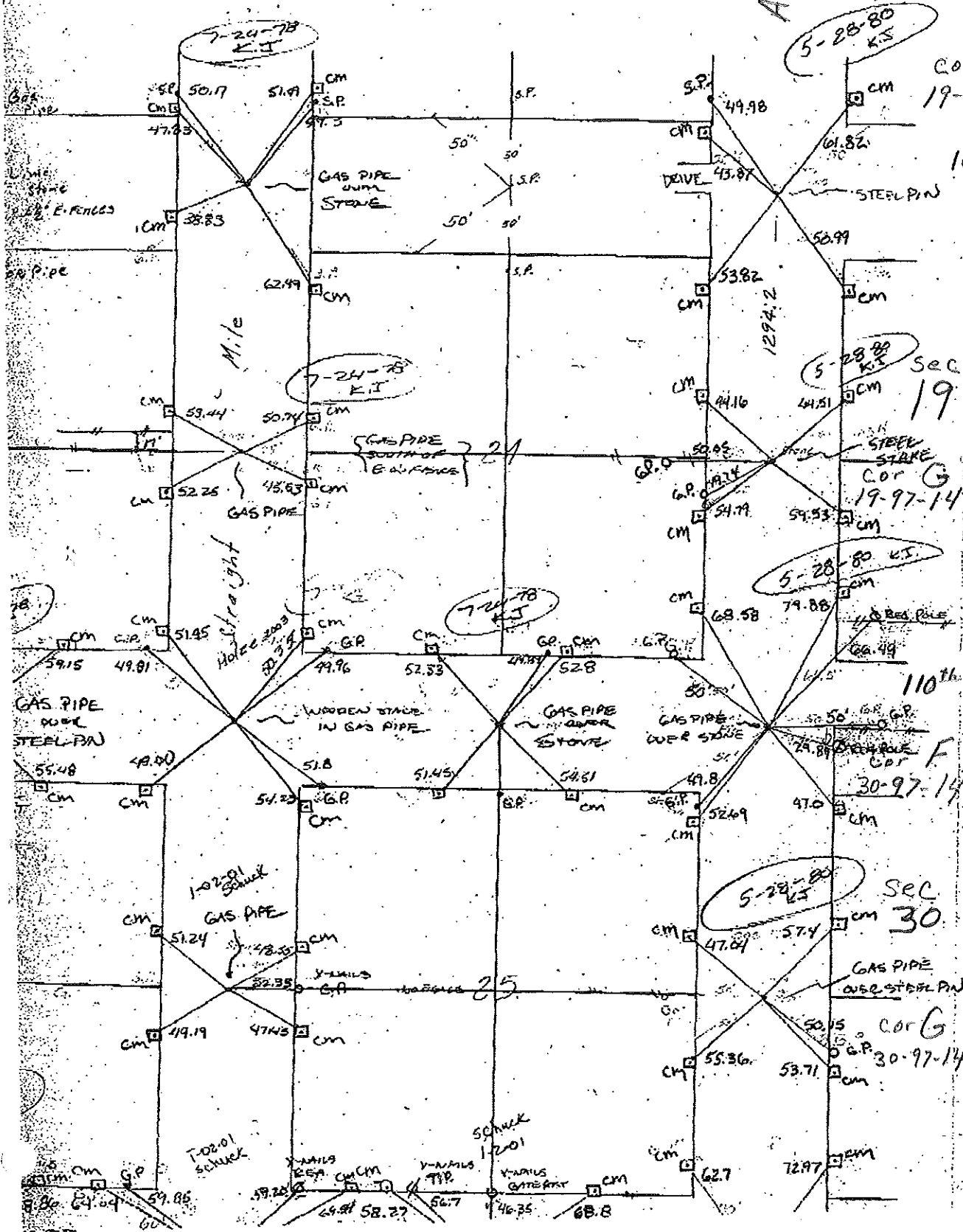
List Corners to be indexed

Corners	Section	Twp	Range
E $\frac{1}{4}$ Cor.	25	T97N	R15W

24-25-26 TWP. 97 RANGE 15

Section 30-97-14
As referred to in
Engr. The Book

Addison Ave.



the SW corner and the S.W. corner of Section 23, Twp 97 Range 15, had been set
 by the survey. As these did not fit conditions and would change all fences and road
 the points were set as shown April, 25th, 1938 26.8' South