

Prepared by & Return to Herold - Reicks Surveying, 10 East Main Street, New Hampton, IA 50659, Ph. 641-394-2725

### UNITED STATES PUBLIC LAND SURVEY CORNER CERTIFICATE

Land Survey Monuments situated in Section 30, Township 95 North, Range 14 West of the Fifth Principal Meridian, Chickasaw County, Iowa. 1., 2.) Not previously recorded in the County Recorder's office.

This certificate is being prepared in compliance with Iowa Code Chapter 355.11 because:

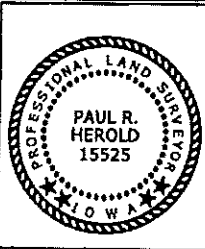
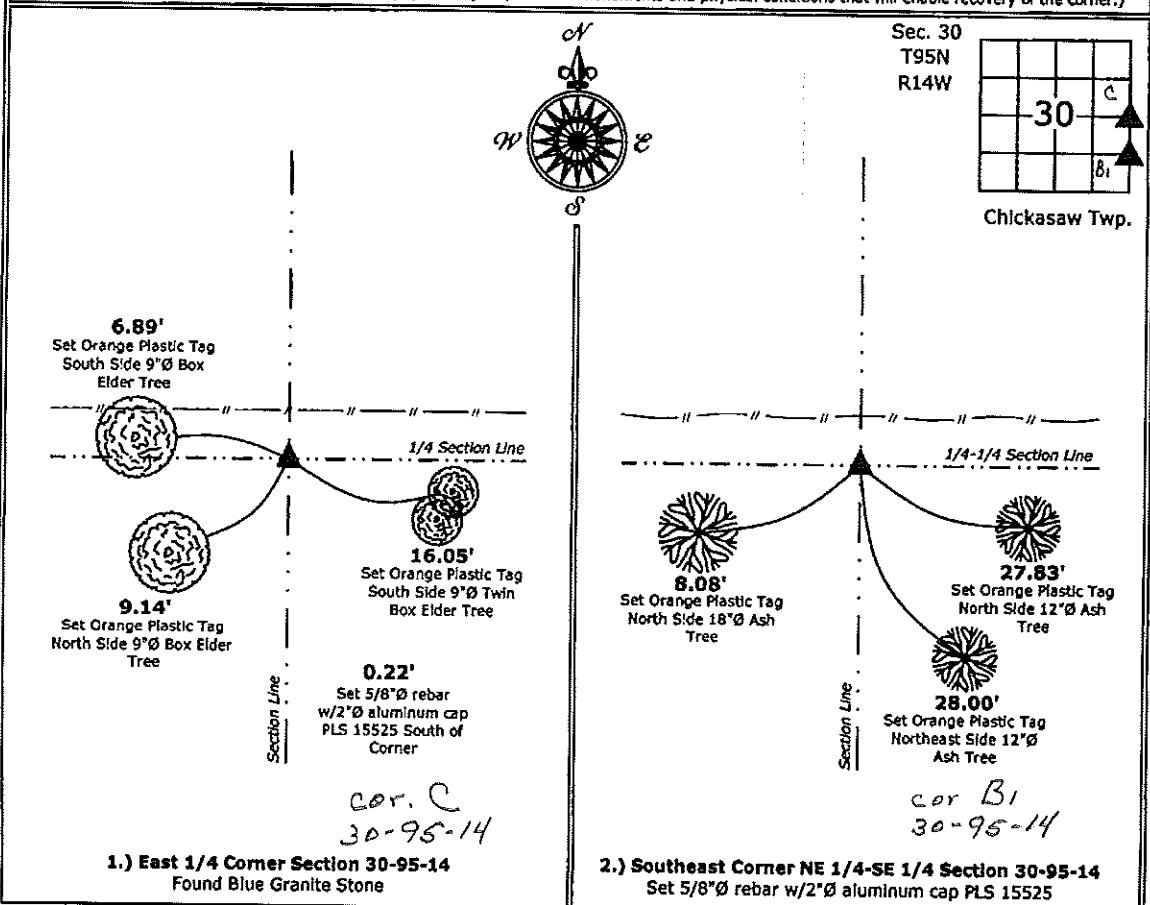
- 1 & 2  There is no certificate on file for this corner.  
 There are no longer three valid ties of record.  
 There are changes to reference ties of record.  
 There is change of monumentation of record.  
 To clarify description of record monument (ties).

Monument Description and Remarks:

- 1.) East 1/4 Corner:** Found Blue Granite Stone. The history of this corner is ambivalent. After intersecting possession line fences and computing search location and After a thorough search found the Blue Granite Stone with a predominant high point which was discovered in the vicinity of an ancient division post. This type of monument is conducive with the monumentation established on the early Chickasaw County Surveys, position was accepted as Corner.
- 2.) Southeast Corner NE 1/4-SE 1/4:** Set 5/8"Ø rebar with 2"Ø aluminum cap PLS 15525 equidistant and online between the East 1/4 and Southeast Corners of Section 30.

#### PLAN - VIEW

(Show a minimum of three reference ties to durable physical objects, relevant monuments and physical conditions that will enable recovery of the corner.)



I hereby certify that this land surveying document was prepared and the related survey work was performed by me or under my direct personal supervision and that I am a duly licensed Land Surveyor under the laws of the State of Iowa.

*Paul R. Herold* 10-11-13  
 Paul R. Herold Date:

License number 15525  
 My license renewal date is December 31, 2014.  
 Sheets covered by this seal: Individual sheet only

List Corners to be Indexed			
Corners	Section	Twp.	Range
E 1/4	30	95	14
SE-NE-SE	30	95	14

Project Number: 2013-150  
 FB: Chickasaw 5, Pgs. 60-62