

Instrument #: 2021-0523  
 03/15/2021 09:59:52 AM Total Pages: 1  
 SCC SECTION CORNER CERTIFICATES  
 Recording Fee: \$ 7.00  
 Shirley Troyna, Recorder, Chickasaw County Iowa

Reserved for County Records

Kyle J. Helland, 6109 Chancellor Drive, Cedar Falls, Iowa 50613-6916, (319)-266-0161

## UNITED STATES PUBLIC LAND SURVEY CORNER CERTIFICATE OF

LAND SURVEY MONUMENTS SITUATED IN SECTION NO. 30, TOWNSHIP NO. 95 NORTH, RANGE  
 NO. 14 WEST OF THE FIFTH PRINCIPAL MERIDIAN, CHICKASAW COUNTY, IOWA.  
 PREVIOUSLY RECORDED IN N/A

(SHOW REASON FOR PREPARING THIS CERTIFICATE, THE EVIDENCE AND DETAILED PROCEDURES USED IN ESTABLISHING THE  
 CORNER POSITIONS AND MONUMENTATION FOUND OR PLACED.)

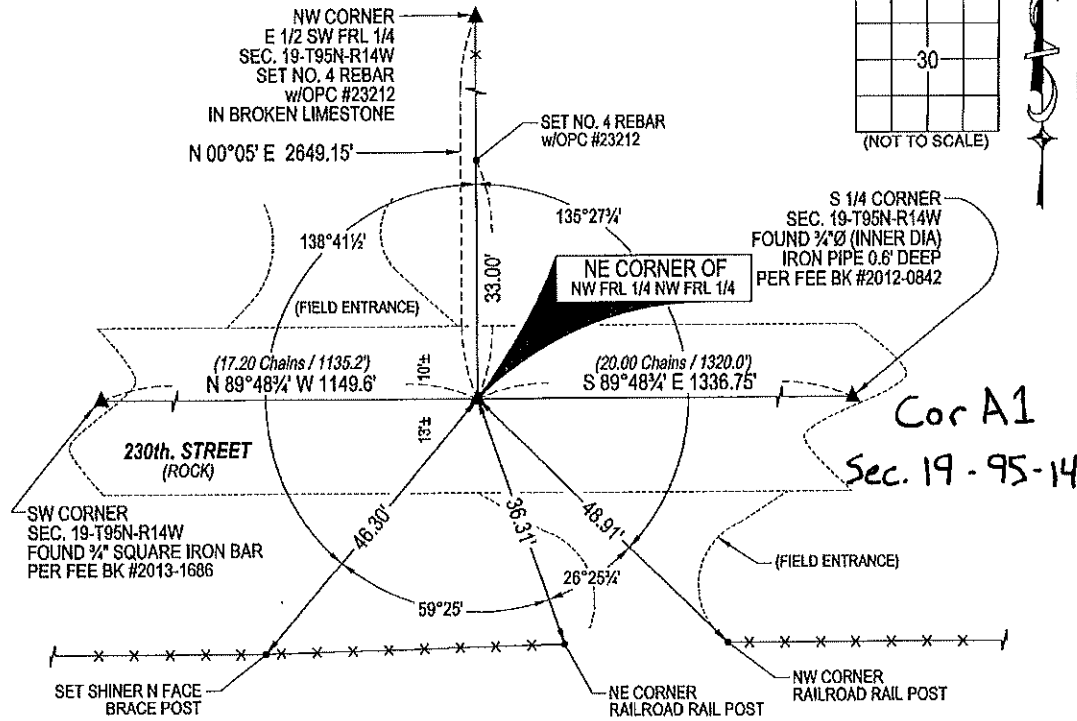
**MONUMENT DESCRIPTION AND REMARKS:**

NO USPLSCC ON FILE. SURVEY COMPLETED IN THE E 1/2 SW FRL 1/4 OF SEC. 19-T95N-R14W.

**NE CORNER NW FRL 1/4 NW FRL 1/4:** NO BREMER COUNTY ENGINEER TIES AVAILABLE NOR ANY OTHER PUBLIC DOCUMENTATION OF THE HISTORY AND PERPETUATION OF CORNER WAS AVAILABLE. SEARCHED AREA AND NOTHING FOUND. HISTORICAL AERIAL PHOTOS SHOW THE 1/4 1/4 LINE NORTH VIA A BOUNDARY FENCE. FENCE IS NOW PARTIALLY REMOVED TO JUST SOUTH OF CREEK APPROX. 1300± NORTH OF CORNER AND NO BOUNDARY FENCE LINE SOUTH. EXTENDING A BEST FIT LINE OF SAID REMAINING BOUNDARY LINE FENCE SOUTH, LOCATION FITS WITHIN REASON OF PRORATED ORIGINAL GOVERNMENT NOTES DISTANCE. THEREFORE, SET COTTON GIN SPIKE AT LOCATION (IN HARD FROZEN ROADBED) AT SAID PRORATED DISTANCES. SAID COTTON GIN SPIKE IS 0.3' DEEP.

### PLAN VIEW

(SHOW A MINIMUM OF THREE REFERENCE TIES TO DURABLE PHYSICAL OBJECTS, RELEVANT MONUMENTS AND PHYSICAL CONDITIONS THAT WILL ENABLE RECOVERY OF THE CORNER.)



(BEARINGS ARE ASSUMED)



**HELLAND ENGINEERING & SURVEYING, LTD.**  
 6109 Chancellor Drive  
 Cedar Falls, Iowa 50613-6916  
 (319)-266-0161

BRASS TAG = 4d. NAIL & 13/16" Ø BRASS TAG DRAWN BY: KDA  
 SHINER = 1" Ø STEEL SHINER w/MASONRY NAIL  
 OPC = PLASTIC CAP (O=ORANGE, R=RED, Y=YELLOW)  
 (00) RECORDED AS FILE NAME: 21-119-53.DWG



I hereby certify that this land surveying document was prepared and the related survey work was performed by me or under my direct personal supervision and that I am a duly licensed Professional Land Surveyor under the laws of the State of Iowa.  
*Kyle J. Helland* 03/10/2021  
 Kyle J. Helland  
 License Number 23212  
 My license renewal date is December 31, 2021.  
 All pages or sheets are covered by this seal except:

LIST CORNERS TO BE INDEXED			
CORNER	SECTION	TOWNSHIP	RANGE
NE COR. NW FRL 1/4 NW FRL 1/4	30	95N	14W
SE COR. SW FRL 1/4 SW FRL 1/4	19	95N	14W
SW COR. SE FRL 1/4 SW FRL 1/4	19	95N	14W
NW COR. NE FRL 1/4 NW FRL 1/4	30	95N	14W