

Prepared by & Return to Herold - Recks Surveying, 10 East Main Street, New Hampton, IA 50659, Ph. 641-394-2725

UNITED STATES PUBLIC LAND SURVEY CORNER CERTIFICATE

Land Survey Monuments situated in Section ¹⁹30, Township 95 North, Range 14 West of the Fifth Principal Meridian, Chickasaw County, Iowa. Previously recorded in Bk. 2001, Pg. 1119 in the County Recorder's office.

This certificate is being prepared in compliance with Iowa Code Chapter 355.11 because:

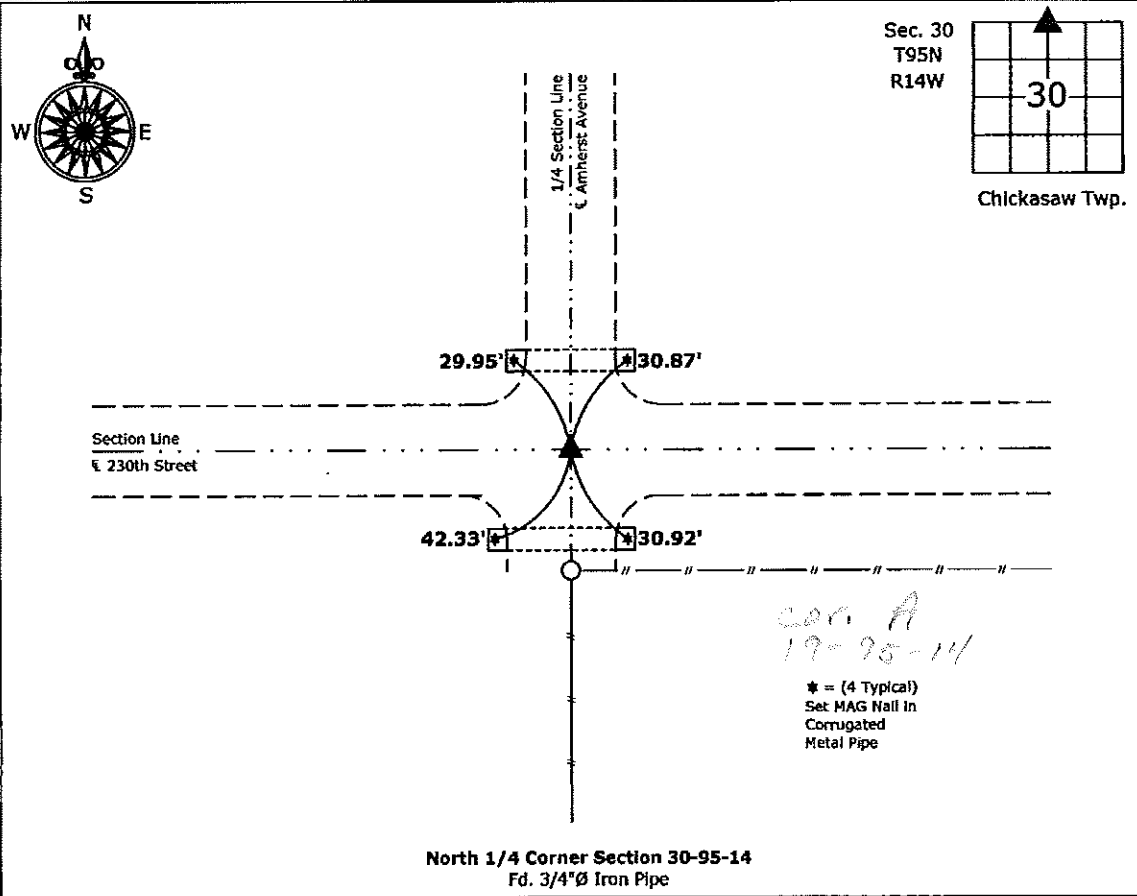
- There is no certificate on file for this corner.
- There are no longer three valid ties of record.
- There are changes to reference ties of record.
- There is change of monumentation of record.
- To clarify description of record monument (ties).

Monument Description and Remarks:

North 1/4 Corner: Fd. 3/4"Ø Iron Pipe from previous Section Corner Certificate, all ties were missing, set new ties to update corner.

PLAN - VIEW

(Show a minimum of three reference ties to durable physical objects, relevant monuments and physical conditions that will enable recovery of the corner.)



North 1/4 Corner Section 30-95-14
 Fd. 3/4"Ø Iron Pipe



I hereby certify that this land surveying document was prepared and the related survey work was performed by me or under my direct personal supervision and that I am a duly licensed Land Surveyor under the laws of the State of Iowa.

Paul R. Herold 4-27-12
 Paul R. Herold Date:
 License number 15525

List Corners to be Indexed			
Corners	Section	Twp.	Range
N 1/4	30	95	14

Harlan K. Schuck, L.S., Ryken Engineering, 711 Park Avenue, Ackley, IA. 50601-Ph. 641-847-3273

UNITED STATES PUBLIC LAND SURVEY CORNER CERTIFICATE OF

Land Survey Monuments situated in Section 19, Township 95, Range 14, of the Fifth Principal Meridian, CHICKASAW County, Iowa,

Previously recorded in NOT APPLICABLE in County Recorder's Office

(Show reason for preparing this certificate, the evidence and detailed procedures used in establishing the corner positions and monumentation found or placed.)

Monument Description and Remarks: Used S 1/4 & SE Cor to tie in survey

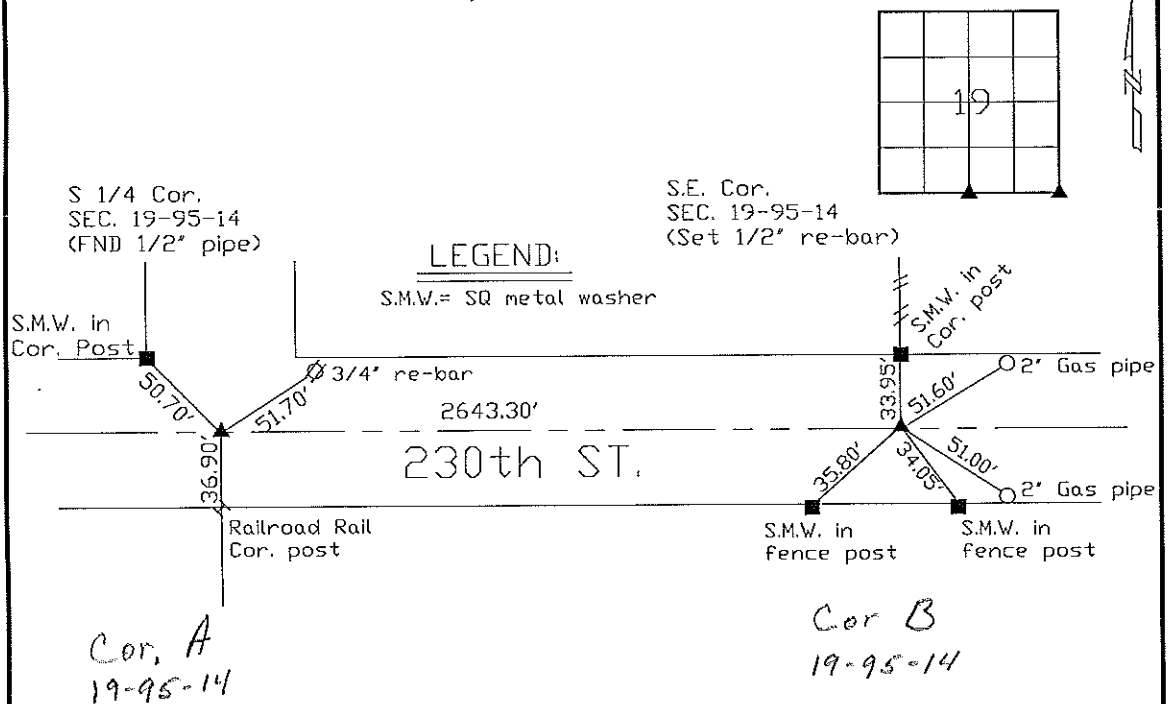
No certificates on file

S 1/4 Cor. - Found 1/2" pipe center of intersection - matches ties of record

SE Cor. - Set 1/2" re-bar centerline of road on line w/ fence north using existing ties.

PLAN VIEW

(Show a minimum of three reference ties to durable physical objects, relevant monuments, and physical conditions that will enable recovery of the corner.)

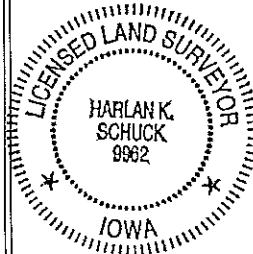


I hereby certify that this land surveying document was prepared and the related survey work was performed by me or under my direct personal supervision and that I am a duly licensed Land Surveyor under the laws of the State of Iowa.

Harlan K. Schuck

HARLAN K. SCHUCK
Date: 5-25-01 License number: 9962
My license renewal date is December 31, 2001

List Corners to be Indexed			
Corners	Section	Twp	Range
S 1/4	19	95	14
SE	19	95	14



in Book 6-25-01

UNITED STATES PUBLIC LAND SURVEY CORNER CERTIFICATE
OF

Land Survey Monuments situated in Section 19, Township 95 N, Range 14 W, of the Fifth Principal Meridian, CHICKASAW County, Iowa
Previously recorded in _____ In County Recorder's Office.

(book, page, document, number, etc.)

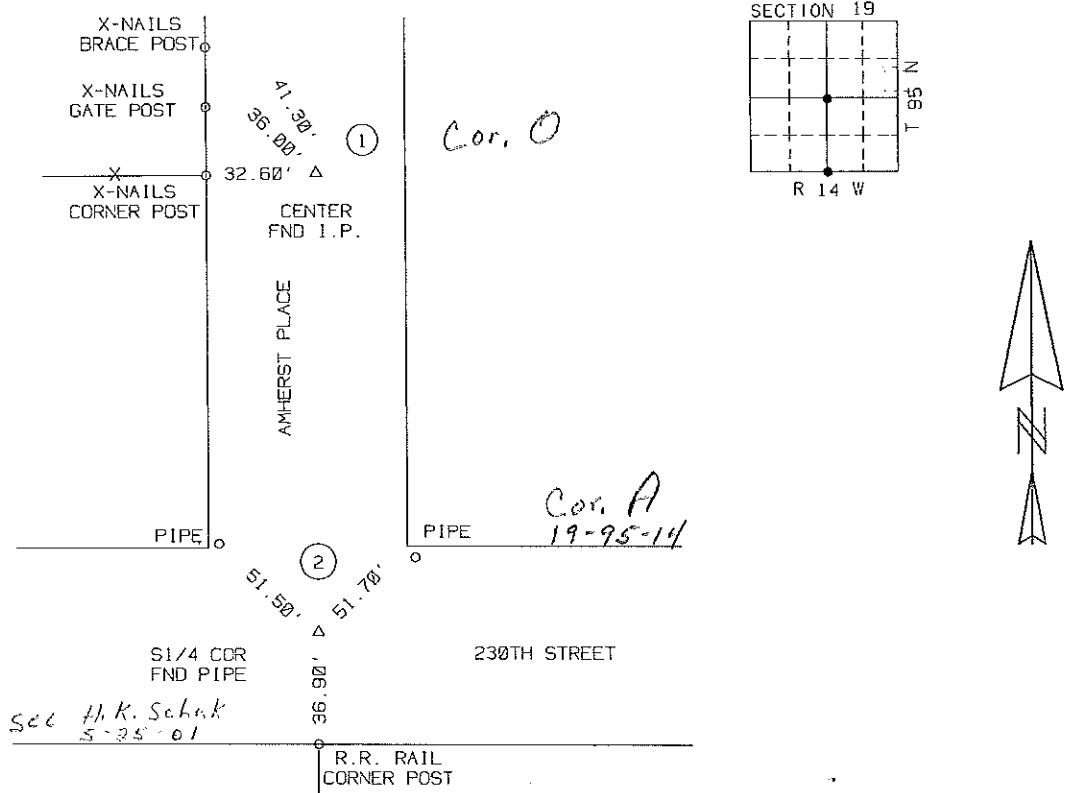
(Show reason for preparing this certificate, the evidence and detailed procedures used in establishing the corner positions and monumentation found or placed.)

Monument Description and Remarks: STALEY SURVEY

- ① CENTER SECTION 19 FOUND I.P.
- ② 1/4 CORNER SECTION 19 FOUND PIPE

PLAN-VIEW

(Show a minimum of three reference ties to durable physical objects, relevant monuments and physical conditions that will enable recovery of corner.)



I hereby certify that the survey work was completed and this certificate was prepared by me or under my direct personal supervision and that I am a duly Licensed Land Surveyor under the laws of the State of Iowa.

Signature: Robert L. Holze
Robert L. Holze

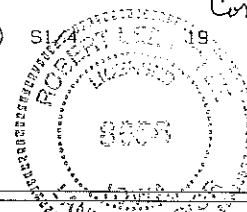
Date: 12/1/97 Reg. No. 8656

My registration renewal date is December 31, 1997.

List of Corners to be Indexed

Corners	Section	Twp.	Range
① CENTER	19	95	14
② 1/4	19	95	14

Corner 0 19-95-14
Corner A 19-95-14



Placed in
the book 12/17/97