

Harlan K. Schuck, L.S., Ryken Engineering, 711 Park Avenue, Ackley, IA. 50601-Ph. 641-847-3273

UNITED STATES PUBLIC LAND SURVEY CORNER CERTIFICATE OF

Land Survey Monuments situated in Section 19, Township 95, Range 14, of the Fifth Principal Meridian, CHICKASAW County, Iowa,

Previously recorded in NOT APPLICABLE in County Recorder's Office

(Show reason for preparing this certificate, the evidence and detailed procedures used in establishing the corner positions and monumentation found or placed.)

Monument Description and Remarks: Used S 1/4 & SE Cor to tie in survey

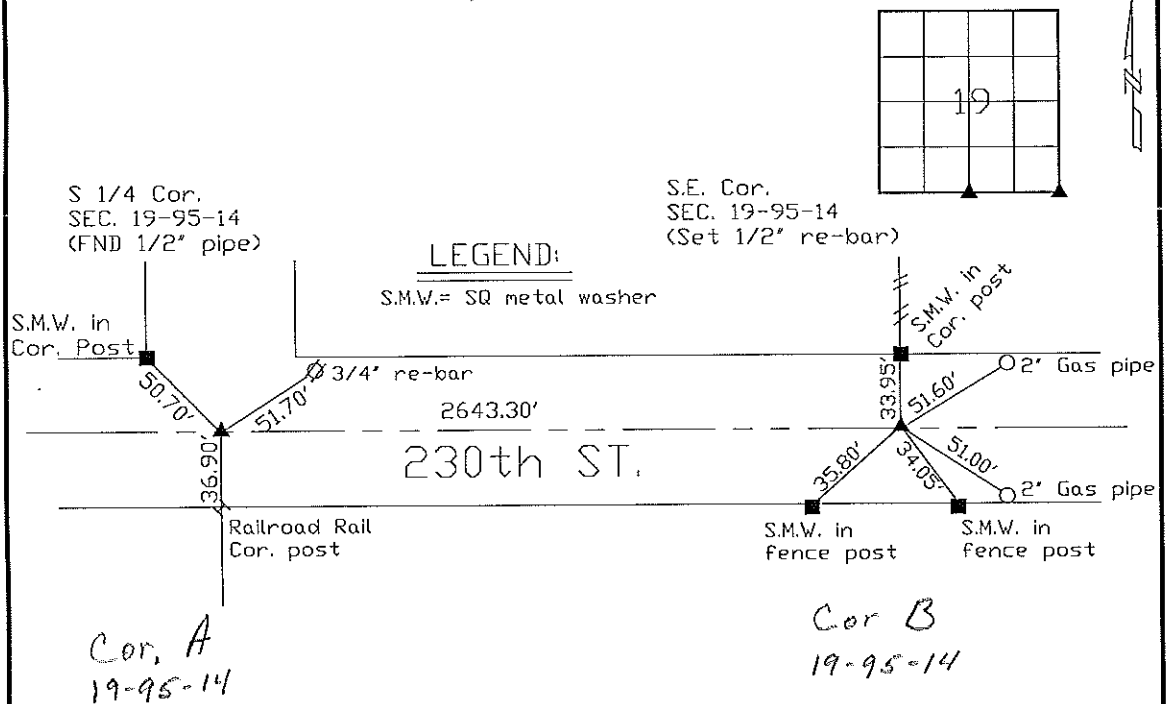
No certificates on file

S 1/4 Cor. - Found 1/2" pipe center of intersection - matches ties of record

SE Cor. - Set 1/2" re-bar centerline of road on line w/ fence north using existing ties.

PLAN VIEW

(Show a minimum of three reference ties to durable physical objects, relevant monuments, and physical conditions that will enable recovery of the corner.)



I hereby certify that this land surveying document was prepared and the related survey work was performed by me or under my direct personal supervision and that I am a duly licensed Land Surveyor under the laws of the State of Iowa.

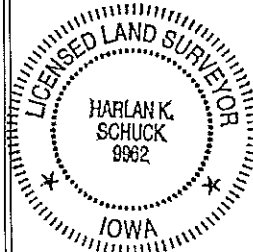
Harlan K. Schuck

HARLAN K. SCHUCK

Date: 5-25-01 License number: 9962

My license renewal date is December 31, 2001

List Corners to be Indexed			
Corners	Section	Twp	Range
S 1/4	19	95	14
SE	19	95	14



in Book 6-25-01