

Prepared by & Return to: Harold - Reicks Surveying, 10 East Main Street, New Hampton, IA 50659, Ph. 641-394-2725

**UNITED STATES PUBLIC LAND SURVEY CORNER CERTIFICATE**

Land Survey Monuments situated in Section <sup>31</sup>6, Township 94 North, Range 14 West of the Fifth Principal Meridian, Chickasaw County, Iowa. 1.) Previously recorded in Bk. 2011, Pg. 1113 in the County Recorder's office. 2.) Previously recorded in Bk. 2007, Pg. 0649 in the County Recorder's office.

This certificate is being prepared in compliance with Iowa Code Chapter 355.11 because:

- There is no certificate on file for this corner.
- There are no longer three valid ties of record.
- There are changes to reference ties of record.
- 1 & 2  There is change of monumentation of record.
- To clarify description of record monument (ties).

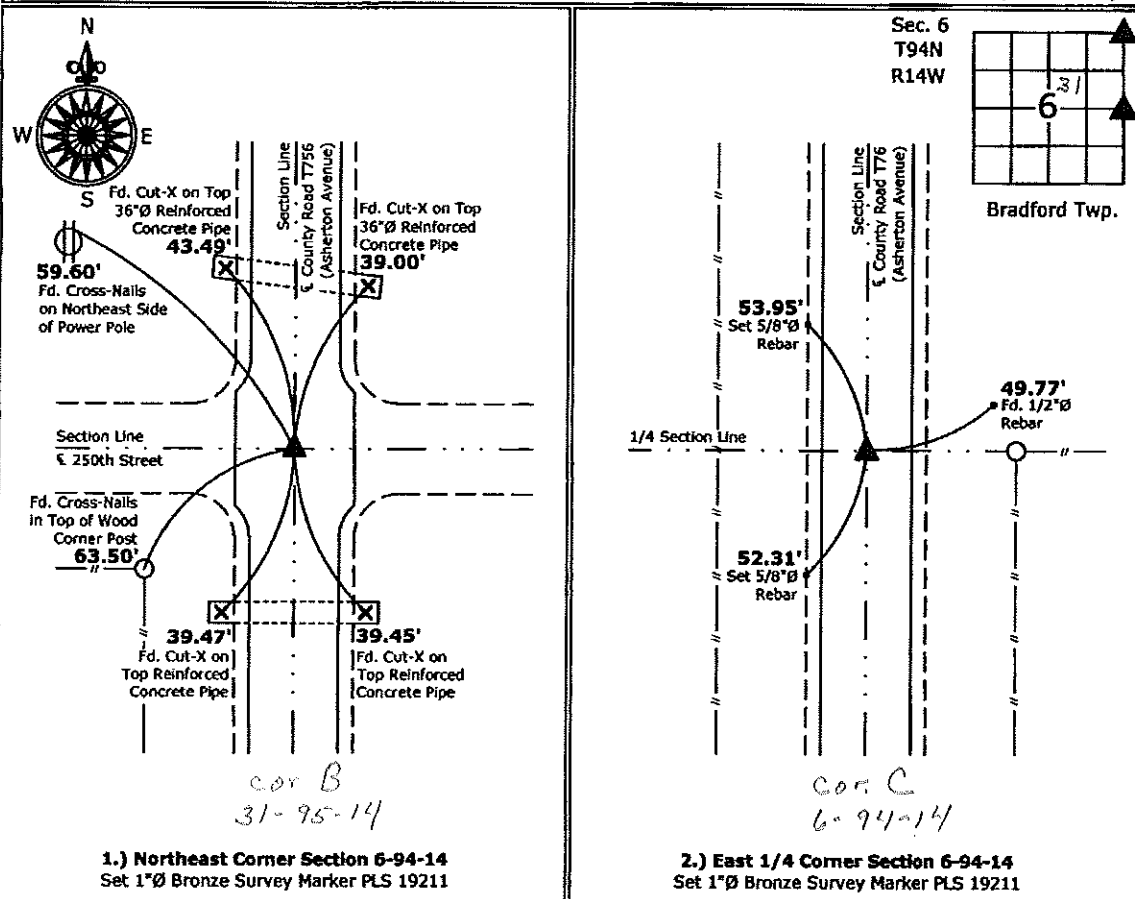
**Monument Description and Remarks:**

1.) **Northeast Corner:** Set 1"Ø Bronze Survey Marker PLS 19211 at previous location (Found MAG Nail) by means of coordinates obtained prior to highway reconstruction, Project No. STP-S-CO19(80)--5E-19.

2.) **East 1/4 Corner:** Set 1"Ø Bronze Survey Marker PLS 19211 at previous location (Found MAG Nail) by means of coordinates obtained prior to highway reconstruction, Project No. STP-S-CO19(80)--5E-19.

**PLAN - VIEW**

(Show a minimum of three reference ties to durable physical objects, relevant monuments and physical conditions that will enable recovery of the corner.)



I hereby certify that this land surveying document was prepared and the related survey work was performed by me or under my direct personal supervision and that I am a duly licensed Land Surveyor under the laws of the State of Iowa.

*Kirk D. Reicks* 7-5-12  
 Kirk D. Reicks Date:  
 License number 19211

List Corners to be Indexed			
Corners	Section	Twp.	Range
NE	6	94	14
E 1/4	6	94	14

Prepared by & Return to Herold - Recks Surveying, 10 East Main Street, New Hampton, IA 50659, Ph. 641-394-2725

### UNITED STATES PUBLIC LAND SURVEY CORNER CERTIFICATE

Land Survey Monuments situated in Section 31, Township 95 North, Range 14 West of the Fifth Principal Meridian, Chickasaw County, Iowa. 1.) & 2.) Not previously recorded in the County Recorder's office.

This certificate is being prepared in compliance with Iowa Code Chapter 355.11 because:

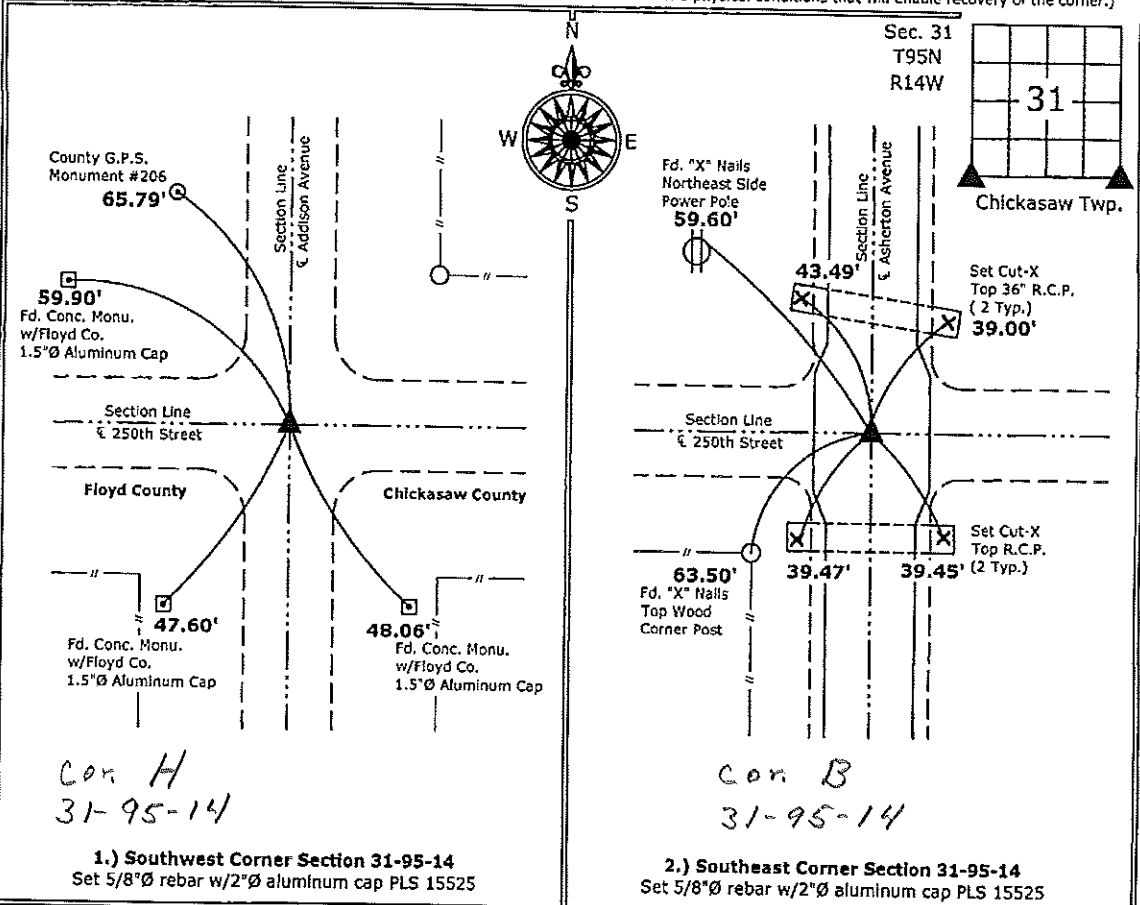
- 1.) & 2.)  There are no certificates on file for these corners.  
 There are no longer three valid ties of record.  
 There are changes to reference ties of record.  
 There is change of monumentation of record.  
 To clarify description of record monument (ties).

Monument Description and Remarks:

- 1.) Southwest Corner:** Set 5/8"Ø rebar w/2"Ø aluminum cap PLS 15525 from County tie information obtained at the Floyd County Engineer's office.
- 2.) Southeast Corner:** Found nail shaft with information obtained from the County Engineer's office in field book Chickasaw Twp., Section 30, Corner "B". Removed shaft and set new Mag Nail.

#### PLAN - VIEW

(Show a minimum of three reference ties to durable physical objects, relevant monuments and physical conditions that will enable recovery of the corner.)



**1.) Southwest Corner Section 31-95-14**  
 Set 5/8"Ø rebar w/2"Ø aluminum cap PLS 15525

**2.) Southeast Corner Section 31-95-14**  
 Set 5/8"Ø rebar w/2"Ø aluminum cap PLS 15525



I hereby certify that this land surveying document was prepared and the related survey work was performed by me or under my direct personal supervision and that I am a duly licensed Land Surveyor under the laws of the State of Iowa.

*Paul R. Herold 7-7-11*  
 Paul R. Herold Date:  
 License number 15525  
 My license renewal date is December 31, 2012.  
 Sheets covered by this seal: Individual sheet only

List Corners to be Indexed			
Corners	Section	Twp.	Range
SW	31	95	14
SE	31	95	14

Project Number: 2011-059  
 FB: Chickasaw County 4, Pgs. 2-4