

Chickasaw Co. Recorder
 Cindy Messersmith
Fee Book 2014-1542
 10/27/2014 @ 01:18 PM
 SCC: SEC COR CERT # Pages: 1
 Book: Page: \$7.00
 Total Fees:

Prepared by & Return to Herold - Reicks Surveying, 10 East Main Street, New Hampton, IA 50559, Ph. 641-394-2725

UNITED STATES PUBLIC LAND SURVEY CORNER CERTIFICATE

Land Survey Monuments situated in Section 31, Township 95 North, Range 14 West of the Fifth Principal Meridian, Chickasaw County, Iowa. Previously not recorded in the County Recorder's office.

This certificate is being prepared in compliance with Iowa Code Chapter 355.11 because:

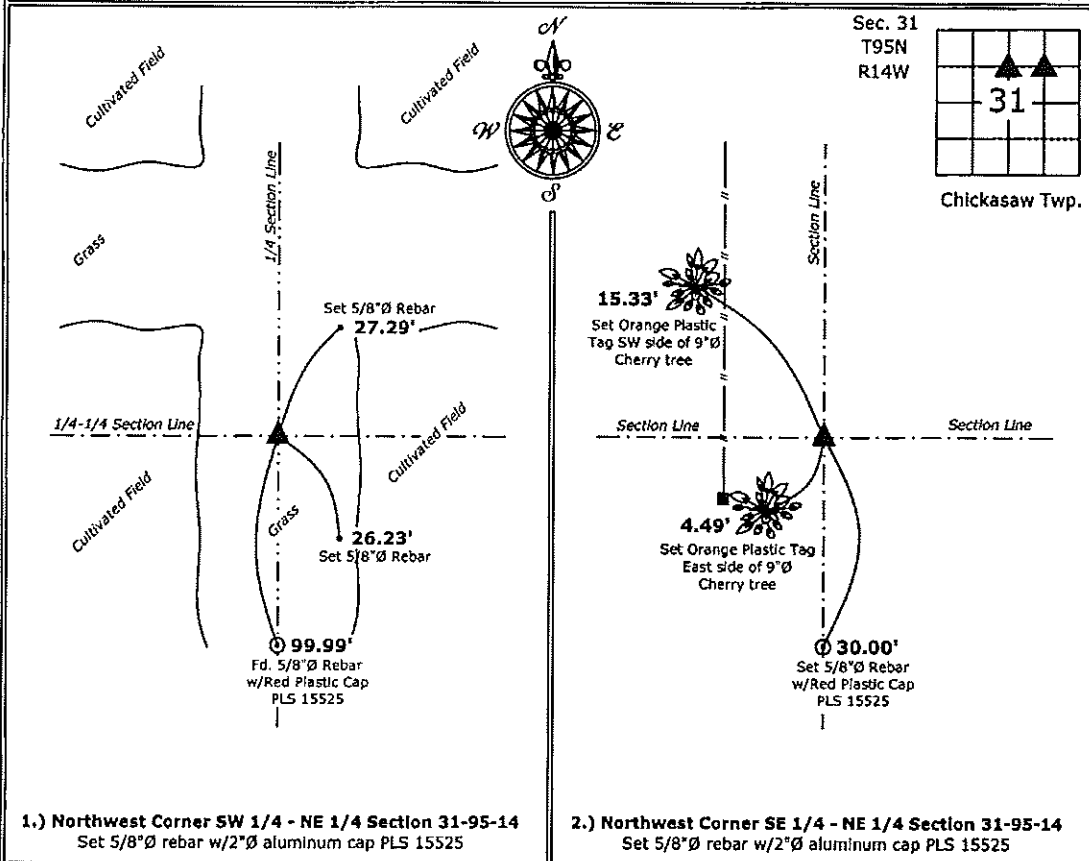
- 1 & 2 There is no certificate on file for this corner.
 There are no longer three valid ties of record.
 There are changes to reference ties of record.
 There is change of monumentation of record.
 To clarify description of record monument (ties).

Monument Description and Remarks:

- Northwest Corner SW 1/4 - NE 1/4:** Set 5/8"Ø rebar with 2"Ø aluminum cap PLS 15525 equidistant and online between the North 1/4 Corner and Center of Section 31.
- Northwest Corner SE 1/4 - NE 1/4:** Set 5/8"Ø rebar with 2"Ø aluminum cap PLS 15525 at the intersection of the Quarter-Quarter Section lines.

PLAN - VIEW

(Show a minimum of three reference ties to durable physical objects, relevant monuments and physical conditions that will enable recovery of the corner.)



I hereby certify that this land surveying document was prepared and the related survey work was performed by me or under my direct personal supervision and that I am a duly licensed Land Surveyor under the laws of the State of Iowa.

Paul R. Herold 10-24-14
 Paul R. Herold Date:
 License number 15525
 My license renewal date is December 31, 2014.
 Sheets covered by this seal: Individual sheet only

List Corners to be Indexed			
Corners	Section	Twp.	Range
NW-SW-NE	31	95	14
NW-SE-NE	31	95	14

Project Number: 2014-185
 FB: Chickasaw County 6, Pgs. 57-58

File: S:_CSD Projects\County Control Systems\CHICKASAW\CHICK-32\CHICK-32.dwg, 10/20/2014 3:48:10 PM

Prepared by & Return to: Herold - Reicks Surveying, 10 East Main Street, New Hampton, IA 50659, Ph. 64-394-2725

UNITED STATES PUBLIC LAND SURVEY CORNER CERTIFICATE

Land Survey Monuments situated in Section 31, Township 95 North, Range 14 West of the Fifth Principal Meridian, Chickasaw County, Iowa. Previously not recorded in the County Recorder's office.

This certificate is being prepared in compliance with Iowa Code Chapter 355.11 because:

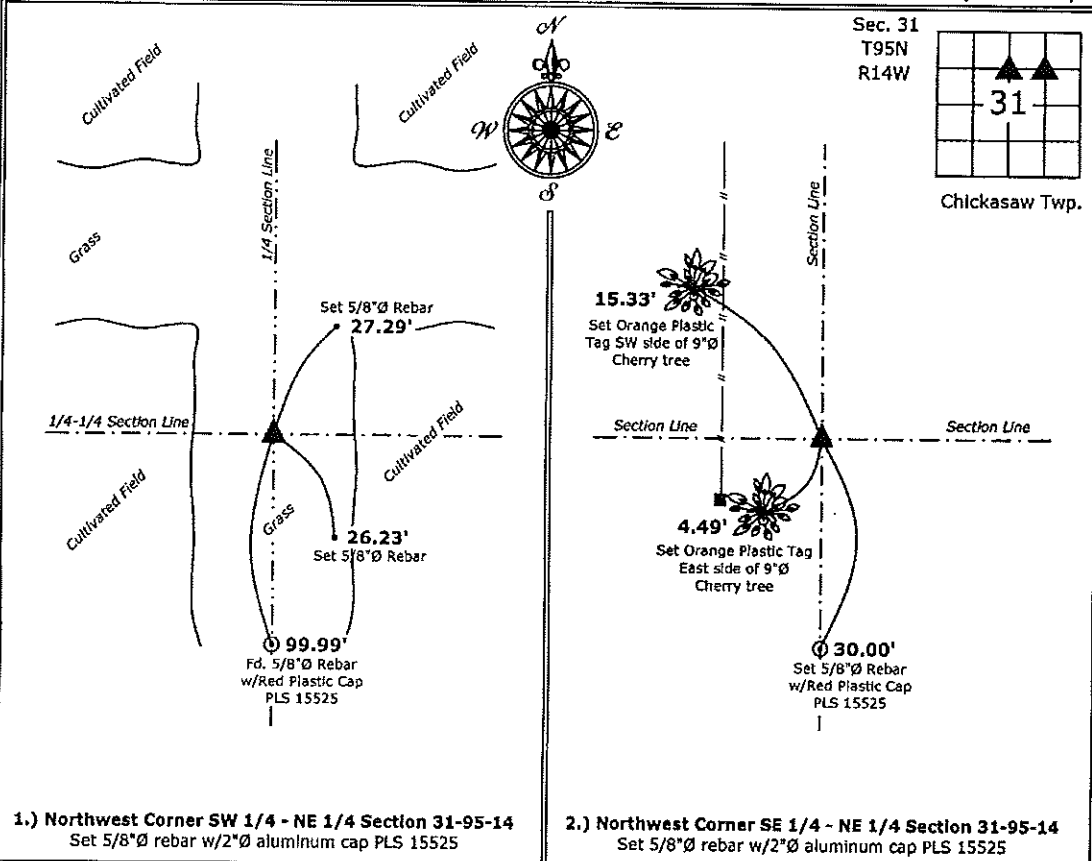
- 1 & 2 There is no certificate on file for this corner.
 There are no longer three valid ties of record.
 There are changes to reference ties of record.
 There is change of monumentation of record.
 To clarify description of record monument (ties).

Monument Description and Remarks:

- 1.) Northwest Corner SW 1/4 - NE 1/4:** Set 5/8"Ø rebar with 2"Ø aluminum cap PLS 15525 equidistant and online between the North 1/4 Corner and Center of Section 31.
- 2.) Northwest Corner SE 1/4 - NE 1/4:** Set 5/8"Ø rebar with 2"Ø aluminum cap PLS 15525 at the intersection of the Quarter-Quarter Section lines.

PLAN - VIEW

(Show a minimum of three reference ties to durable physical objects, relevant monuments and physical conditions that will enable recovery of the corner.)



1.) Northwest Corner SW 1/4 - NE 1/4 Section 31-95-14
 Set 5/8"Ø rebar w/2"Ø aluminum cap PLS 15525

2.) Northwest Corner SE 1/4 - NE 1/4 Section 31-95-14
 Set 5/8"Ø rebar w/2"Ø aluminum cap PLS 15525



I hereby certify that this land surveying document was prepared and the related survey work was performed by me or under my direct personal supervision and that I am a duly licensed Land Surveyor under the laws of the State of Iowa.
Paul R. Herold 10-2-14
 Paul R. Herold Date:
 License number 15525
 My license renewal date is December 31, 2014.
 Sheets covered by this seal: Individual sheet only

List Corners to be Indexed			
Corners	Section	Twp.	Range
NW-SW-NE	31	95	14
NW-SE-NE	31	95	14
Project Number: 2014-185			
FB: Chickasaw County 6, Pgs. 57-58			