

Chickasaw Co. Recorder  
 Cindy Messersmith  
 Fee Book 2017-0021  
 01/04/2017 @0936AM  
 SCC SEC COR CERT # Pages: 1  
 Book: Page: \$7.00  
 Total Fees:

STEVE BUSSE P.O. BOX 241 508 ELM ST. ALLISON, IOWA 50602 319-267-2519

UNITED STATES PUBLIC LAND SURVEY CORNER CERTIFICATE  
 OF

LAND SURVEY MONUMENTS SITUATED IN SECTION NO. 32, TOWNSHIP NO. 95 NORTH, RANGE  
 NO. 14 WEST OF THE FIFTH PRINCIPAL MERIDIAN, CHICKASAW COUNTY, IOWA.  
 PREVIOUSLY RECORDED IN N/A

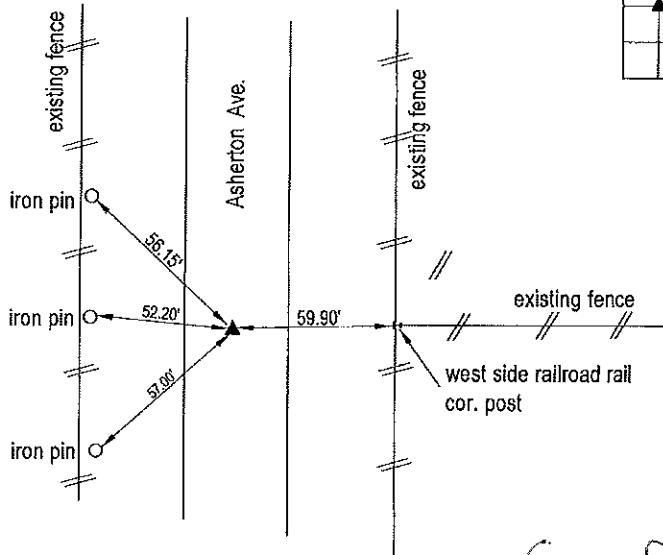
(SHOW REASON FOR PREPARING THIS CERTIFICATE, THE EVIDENCE AND DETAILED PROCEDURES USED IN ESTABLISHING THE  
 CORNER POSITIONS AND MONUMENTATION FOUND OR PLACED.)

MONUMENT DESCRIPTION AND REMARKS:

Did not find a certificate recorded for this corner. Searched area near corner but found nothing in concrete paving.  
 County information shows ties but does not list what is at corner. Found 4 of 5 ties listed. Set mag nail 0.90' East of  
 centerline paving at ties. Used corner in survey in section 32.

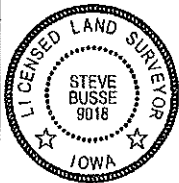
PLAN VIEW

(SHOW A MINIMUM OF THREE REFERENCE TIES TO DURABLE PHYSICAL OBJECTS, RELEVANT MONUMENTS AND PHYSICAL  
 CONDITIONS THAT WILL ENABLE RECOVERY OF THE CORNER.)



SOUTHEAST CORNER OF  
 SOUTHWEST 1/4 OF NORTHWEST 1/4

Cor. P



I HEREBY CERTIFY THAT THIS LAND SURVEYING DOCUMENT  
 WAS PREPARED AND THE RELATED SURVEY WORK WAS  
 PERFORMED BY ME OR UNDER MY DIRECT PERSONAL  
 SUPERVISION AND THAT I AM A DULY LICENSED LAND  
 SURVEYOR UNDER THE LAWS OF THE STATE OF IOWA.

*Steve Busse* 12/29/16  
 STEVE BUSSE DATE

LICENSE NUMBER 9018  
 MY LICENSE RENEWAL DATE IS DECEMBER 31, 2018 /  
 PAGES OR SHEETS COVERED BY THIS SEAL 1

G.P. = 2" GAS PIPE  
 CONC MONU = CONCRETE MONUMENT W/ PIN & ALUM CAP  
 \*X NAILS\* = CROSS NAILS IN WOOD POST  
 OPT = PLASTIC TAG (O=ORANGE, Y=YELLOW)  
 (00) RECORDED AS

LIST CORNERS TO BE INDEXED

CORNER	SECTION	TOWNSHIP	RANGE
SOUTHEAST COR. OF SW 1/4 OF NW 1/4	32	95	14